

Anti-IL-2R α Rabbit pAb

WL02647

For Research Use Only. Not For Use In Diagnostic Procedures

Product Information

Product name	Anti-IL-2R α Rabbit pAb	
Source	Rabbit	
Species reactivity	Human	
Tested applications	WB	1:1000-1:2000
Pack size	50/100/200/500/1000 μ l	
Storage	Store at -20°C. Avoid freeze/thaw cycles.	
Storage buffer	Supplied in 20 mM phosphate (pH 7.5), 150 mM NaCl, 100 μ g/ml BSA, 50% glycerol and less than 0.02% sodium azide	

General Information

Background

The IL-2 receptor is a multicomponent complex consisting of three subunits, α , β and γ , each of which is required for high-affinity binding of IL-2. IL-2R α binds exclusively to IL-2 with low affinity and increases the binding affinity of the whole receptor complex including IL-2R β and γ c subunits. Normally an integral-membrane protein, soluble IL2RA has been isolated and determined to result from extracellular proteolysis. Alternately-spliced IL2RA mRNAs have been isolated, but the significance of each is presently unknown. Mutations in this gene are associated with interleukin 2 receptor alpha deficiency.

Immunogen

Polyclonal antibody is produced by immunizing animals with a synthetic peptide of IL-2R α .

Purification

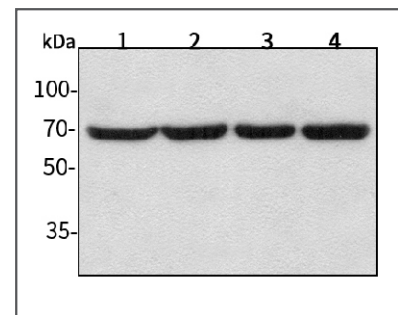
Polyclonal antibody was purified by Protein A affinity chromatography.

Anti-IL-2R α Rabbit pAb

WL02647

For Research Use Only. Not For Use In Diagnostic Procedures

Product Images

Western blot-Anti-IL-2R α pAb

Lane 1: Human HepG2 cell lysate

Lane 2: Human Hela cell lysate

Lane 3: Human BGC-823 cell lysate

Lane 4: Human MGC-803 cell lysate

All lanes: Anti-IL-2R α at 1:1000 dilutionLysates/proteins at 20-50 μ g per lane.

Predicted band size: 31 kDa

Observed band size: 40-80 kDa