

Anti-URAT1/SLC22A12 Rabbit pAb



WL02827

For Research Use Only. Not For Use In Diagnostic Procedures

Product Information

Product name	Anti-URAT1/SLC22A12 Rabbit pAb	
Source	Rabbit	
Species reactivity	Human, Mouse, Rat	
Tested applications	Western blot	1:1000-1:2000
	<i>*Suggested working dilutions are given as a guide only. It is recommended that the user titrates the product for use in their own experiment using appropriate negative and positive controls.</i>	
Pack size	50/100/200/500/1000 µl	
Storage	Store at -20°C. Avoid freeze/thaw cycles.	
Storage buffer	Supplied in 20 mM phosphate (pH 7.5), 150 mM NaCl, 100 µg/ml BSA, 50% glycerol and less than 0.02% sodium azide	

General Information

Background	Solute carrier family 22 (organic anion/cation transporter), member 12, also known as SLC22A12 and URAT1, is a protein which in humans is encoded by the SLC22A12 gene. Expressed in epithelial cells of proximal tubules in renal cortex, SLC22A12 is required for efficient urate re-absorption in the kidney, thereby regulating blood urate levels and mediating saturable urate uptake by facilitating the exchange of urate against organic anions. Lesinurad is an urate transporter inhibitor that has been approved to treat gout. Lesinurad enhances urate excretion by inhibition the tubular re-absorption. Probenecid also facilitates uric acid secretion.
Immunogen	Polyclonal antibody is produced by immunizing animals with a synthetic peptide of URAT1/SLC22A12.
Purification	Polyclonal antibody was purified by Protein A affinity chromatography.

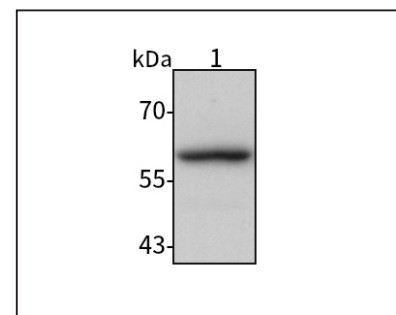
Anti-URAT1/SLC22A12 Rabbit pAb



WL02827

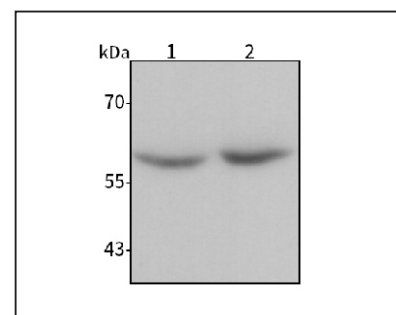
For Research Use Only. Not For Use In Diagnostic Procedures

Product Images



Western blot-Anti-URAT1/SLC22A12 pAb

Lane 1: Human HEK293 cell lysate
 All lanes: Anti-URAT1/SLC22A12 at 1:1000 dilution
 Lysates/proteins at 20-50 µg per lane.
 Predicted band size: 60 kDa



Western blot-Anti-URAT1/SLC22A12 pAb

Lane 1: Mouse kidney tissue lysate
 Lane 2: Rat kidney tissue lysate
 All lanes: Anti-URAT1/SLC22A12 at 1:1000 dilution
 Lysates/proteins at 20-50 µg per lane.
 Predicted band size: 60 kDa