

## Anti-BCL-10 Rabbit pAb



WLH4556

For Research Use Only. Not For Use In Diagnostic Procedures

## Product Information

<b>Product name</b>	Anti-BCL-10 Rabbit pAb	
<b>Source</b>	Rabbit	
<b>Species reactivity</b>	Human, Mouse, Rat	
<b>Tested applications</b>	WB	1:500-1:1000
	IHC	1:100-1:400
<b>Cellular localization</b>	Cytoplasm, perinuclear region. Membrane raft	
<b>Pack size</b>	50/100/200/500/1000μl	
<b>Storage</b>	Store at -20°C. <b>Avoid freeze/thaw cycles.</b>	
<b>Storage buffer</b>	Supplied in 20 mM phosphate (pH 7.5), 150 mM NaCl, 100 μg/ml	
	BSA, 50% glycerol and less than 0.02% sodium azide	

## General Information

<b>Background</b>	The was identified by its translocation in a case of mucosa-associated lymphoid tissue (MALT) lymphoma. BCL10 contains a caspase recruitment domain (CARD), and has been shown to induce apoptosis and to activate NF-kappaB.
<b>Immunogen</b>	Polyclonal antibody is produced by immunizing animals with a synthetic peptide of BCL-10.
<b>Purification</b>	Polyclonal antibody was purified by immunogen affinity chromatography.

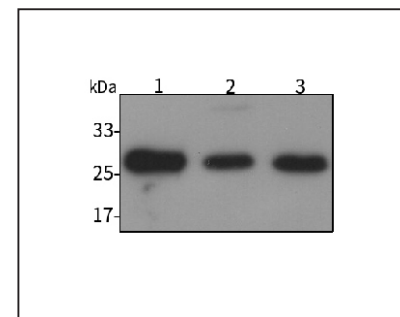
## Anti-BCL-10 Rabbit pAb



WLH4556

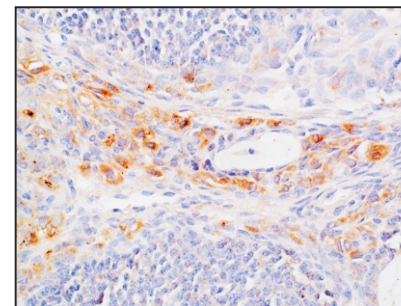
For Research Use Only. Not For Use In Diagnostic Procedures

## Product Images



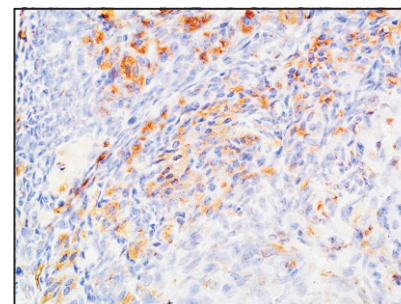
## Western blot-Anti-BCL-10 pAb

**Lane 1:** Human Hela cell lysate  
**Lane 2:** Human HEK-293 cell lysate  
**Lane 3:** Human HCT116 cell lysate  
**All lanes:** Anti-BCL-10 at 1:1000 dilution  
 Lysates/proteins at 20-50 μg per lane.  
 Predicted band size: 26 kDa  
 Observed band size: 28 kDa



## Immunohistochemistry-Anti-BCL-10 pAb

Immunohistochemical analysis of paraffin-embedded mouse ovary using anti-BCL-10 Rabbit Antibody at 1:200 dilution.  
 Perform heat mediated antigen retrieval with Tris-EDTA buffer pH 9.0



## Immunohistochemistry-Anti-BCL-10 pAb

Immunohistochemical analysis of paraffin-embedded rat ovary using anti-BCL-10 Rabbit Antibody at 1:200 dilution.  
 Perform heat mediated antigen retrieval with Tris-EDTA buffer pH 9.0

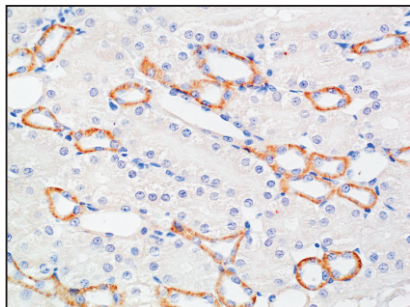
## Anti-BCL-10 Rabbit pAb



WLH4556

For Research Use Only. Not For Use In Diagnostic Procedures

### Product Information



#### Immunohistochemistry-Anti-BCL-10 pAb

Immunohistochemical analysis of paraffin-embedded rat kidney using anti-BCL-10 Rabbit Antibody at 1:200 dilution.

Perform heat mediated antigen retrieval with Tris-EDTA buffer pH 9.0