

## Anti-VGLUT2 Rabbit pAb



WL05200

For Research Use Only. Not For Use In Diagnostic Procedures

## Product Information

<b>Product name</b>	Anti-VGLUT2 Rabbit pAb
<b>Source</b>	Rabbit
<b>Species reactivity</b>	Human, Mouse, Rat
<b>Tested applications</b>	Western blot 1:500-1:1000
	<i>*Suggested working dilutions are given as a guide only. It is recommended that the user titrates the product for use in their own experiment using appropriate negative and positive controls.</i>
<b>Molecular Wt.</b>	64 kDa
<b>Pack size</b>	50/100/200/500/1000μl
<b>Storage</b>	Store at -20°C. <b>Avoid freeze/thaw cycles.</b>
<b>Storage buffer</b>	Supplied in 20 mM phosphate (pH 7.5), 150 mM NaCl, 100 μg/ml BSA, 50% glycerol and less than 0.02% sodium azide

## General Information

<b>Background</b>	Glutamatergic neurons release glutamate, the most common excitatory neurotransmitter. Their synaptic vesicles are filled with glutamate by vesicular glutamate transporters, VGLUTs. VGLUT1, also called solute carrier family 17 member 7 (SLC17A7), was first identified as an inorganic phosphate transporter. Despite the absence of homology with neurotransmitter transporters, VGLUT1 was later demonstrated to be a glutamate transporter specific to glutamatergic neurons.
-------------------	--

<b>Immunogen</b>	Polyclonal antibody is produced by immunizing animals with a synthetic peptide of VGLUT2.
------------------	---

<b>Purification</b>	Polyclonal antibody was purified by immunogen affinity chromatography.
---------------------	--

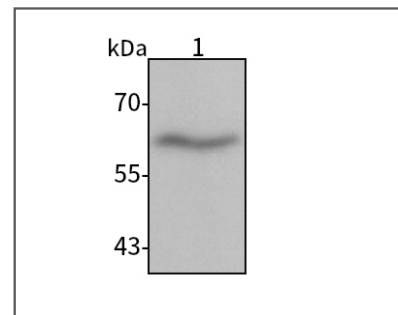
## Anti-VGLUT2 Rabbit pAb



WL05200

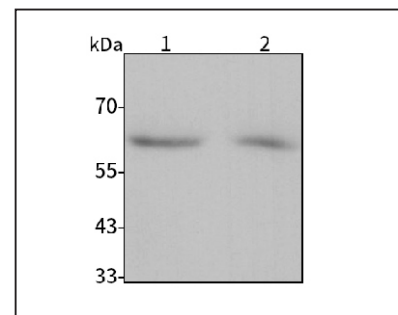
For Research Use Only. Not For Use In Diagnostic Procedures

## Product Images



## Western blot-Anti-VGLUT2 pAb

Lane 1: Human SH-SY5Y cell lysate 20μg  
 Separation gel: 8% polyacrylamide  
 Electrophoresis: 100V, 4°C, 3h  
 Transmembrane: 100V, 4°C, 1h  
 Blocking: 5% w/v nonfat dry milk, 1×TBST, at RT with gentle shaking  
 Primary antibody: 1:1000 in blocking buffer, 4°C, overnight  
 Secondary antibody (WLA023a) : 1:5000-1:10000, 45min  
 Detection: ECL, 30s-2min



## Western blot-Anti-VGLUT2 pAb

Lane 1: Mouse brain tissue lysate 25μg  
 Lane 2: Rat brain tissue lysate 25μg  
 Separation gel: 8% polyacrylamide  
 Electrophoresis: 100V, 4°C, 3h  
 Transmembrane: 100V, 4°C, 1h  
 Blocking: 5% w/v nonfat dry milk, 1×TBST, at RT with gentle shaking  
 Primary antibody: 1:1000 in blocking buffer, 4°C, overnight  
 Secondary antibody (WLA023a) : 1:5000-1:10000, 45min  
 Detection: ECL, 30s-2min