

Anti-cleaved-BID Rabbit pAb



WL01129

For Research Use Only. Not For Use In Diagnostic Procedures

Product Information

Product name	Anti-cleaved-BID Rabbit pAb	
Source	Rabbit	
Species reactivity	Human, Mouse, Rat	
Tested applications	WB	1:1000-1:2000
	IHC	1:100-1:400
Cellular localization	Cytoplasm. Cytoplasm. Mitochondrion membrane	
Pack size	50/100/200/500/1000μl	
Storage	Store at -20°C. Avoid freeze/thaw cycles.	
Storage buffer	Supplied in 20 mM phosphate (pH 7.5), 150 mM NaCl, 100 μg/ml	
	BSA, 50% glycerol and less than 0.02% sodium azide	

General Information

Background	BID is a pro-apoptotic “BH3 domain-only” member of the Bcl-2 family originally discovered to interact with both the anti-apoptotic family member Bcl-2 and the pro-apoptotic protein Bax. Translocation of BID is associated with release of cytochrome c from the mitochondria, leading to complex formation with Apaf-1 and caspase-9 and resulting in caspase-9 activation. BID is localized predominantly in the cytosol and is also present in membrane fractions. It is highly expressed in kidney and can also be detected in brain, spleen, liver, testis and lung.
Immunogen	Polyclonal antibody is produced by immunizing animals with a synthetic peptide of cleaved-BID.
Purification	Polyclonal antibody was purified by protein A affinity chromatography.

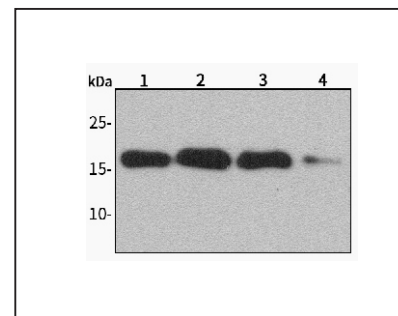
Anti-cleaved-BID Rabbit pAb



WL01129

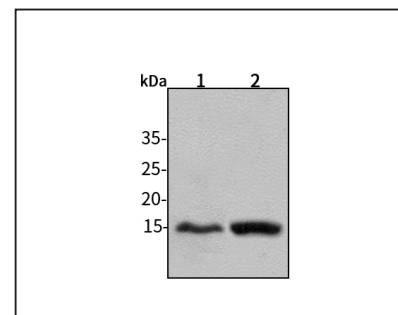
For Research Use Only. Not For Use In Diagnostic Procedures

Product Images



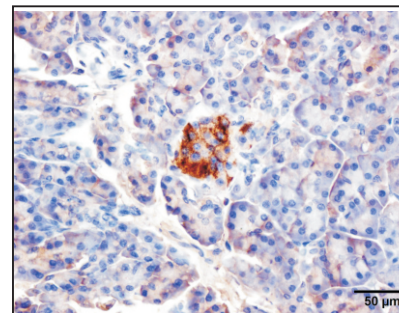
Western blot-Anti-cleaved-BID pAb

Lane 1: Human BGC-823 cell lysate
 Lane 2: Human MGC-803 cell lysate
 Lane 3: Human SGC-7901 cell lysate
 Lane 4: Human Caco2 cell lysate
 All lanes: Anti-cleaved-BID at 1:1000 dilution
 Lysates/proteins at 20-50 μg per lane.
 Predicted band size: 15 kDa
 Observed band size: 15 kDa



Western blot-Anti-cleaved-BID pAb

Lane 1: Mouse liver tissue lysate 30μg
 Lane 2: Rat lung tissue lysate 30μg
 All lanes: Anti-cleaved-BID at 1:1000 dilution
 Lysates/proteins at 20-50 μg per lane.
 Predicted band size: 15 kDa
 Observed band size: 15 kDa



Immunohistochemistry-Anti-cleaved-BID pAb

Immunohistochemical analysis of paraffin-embedded human pancreatic cancer using anti-cleaved-BID Rabbit Antibody at 1:200 dilution.
 Perform heat mediated antigen retrieval with Tris-EDTA buffer pH 9.0

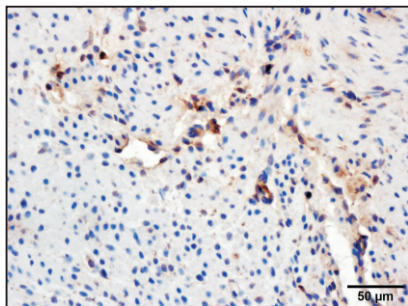
Anti-cleaved-BID Rabbit pAb



WL01129

For Research Use Only. Not For Use In Diagnostic Procedures

Product Information



Immunohistochemistry-Anti-cleaved-BID pAb

Immunohistochemical analysis of paraffin-embedded mouse stomach using anti-cleaved-BID Rabbit Antibody at 1:200 dilution.

Perform heat mediated antigen retrieval with Tris-EDTA buffer pH 9.0