

Anti-BAF57/SMARCE1 Rabbit pAb



WL04665

For Research Use Only. Not For Use In Diagnostic Procedures

Product Information

Product name	Anti-BAF57/SMARCE1 Rabbit pAb	
Source	Rabbit	
Species reactivity	Human, Mouse, Rat	
Tested applications	WB	1:1000-1:2000
Pack size	50/100/200/500/1000μl	
Storage	Store at -20°C. Avoid freeze/thaw cycles.	
Storage buffer	Supplied in 20 mM phosphate (pH 7.5), 150 mM NaCl, 100 μg/ml BSA, 50% glycerol and less than 0.02% sodium azide	

General Information

Background	BAF57/SMARCE1 is part of the large ATP-dependent chromatin remodeling complex SWI/SNF, which is required for transcriptional activation of genes normally repressed by chromatin. Protein, either alone or when in the SWI/SNF complex, can bind to 4-way junction DNA, which is thought to mimic the topology of DNA as it enters or exits the nucleosome. The protein contains a DNA-binding HMG domain, but disruption of this domain does not abolish the DNA-binding or nucleosome-displacement activities of the SWI/SNF complex.
-------------------	---

Immunogen	Polyclonal antibody is produced by immunizing animals with a synthetic peptide of BAF57/SMARCE1.
------------------	--

Purification	Polyclonal antibody was purified by Protein A affinity chromatography.
---------------------	--

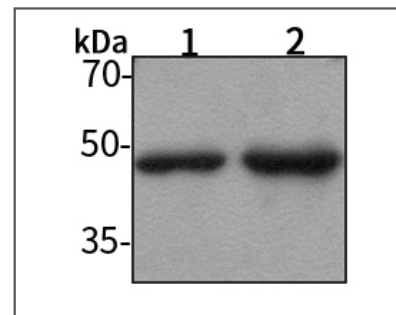
Anti-BAF57/SMARCE1 Rabbit pAb



WL04665

For Research Use Only. Not For Use In Diagnostic Procedures

Product Images



Western blot-Anti-BAF57/SMARCE1 pAb

Lane 1: Human A549 cell lysate

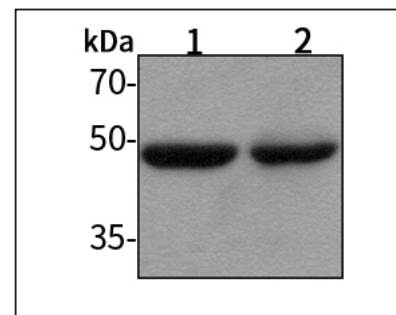
Lane 2: Human HUVEC cell lysate

All lanes: Anti-BAF57/SMARCE1 at 1:1000 dilution

Lysates/proteins at 20-50 μg per lane.

Predicted band size: 47 kDa

Observed band size: 47-55 kDa



Western blot-Anti-BAF57/SMARCE1 pAb

Lane 1: Mouse kidney tissue lysate

Lane 2: Rat liver tissue lysate

All lanes: Anti-BAF57/SMARCE1 at 1:1000 dilution

Lysates/proteins at 20-50 μg per lane.

Predicted band size: 47 kDa

Observed band size: 47-55 kDa