

Anti-Elastin Rabbit pAb



WL04826

For Research Use Only. Not For Use In Diagnostic Procedures

Product Information

Product name	Anti-Elastin Rabbit pAb	
Source	Rabbit	
Species reactivity	Human, Mouse, Rat	
Tested applications	WB	1:500-1:1000
Pack size	50/100/200/500/1000µl	
Storage	Store at -20°C. Avoid freeze/thaw cycles.	
Storage buffer	Supplied in 20 mM phosphate (pH 7.5), 150 mM NaCl, 100 µg/ml BSA, 50% glycerol and less than 0.02% sodium azide	

General Information

Background	Elastic fibers are an abundant and integral part of many extracellular matrices, in which they provide the elastic properties to tissues such as arterial, lung, and skin. The protein is rich in hydrophobic amino acids such as glycine and proline, which form mobile hydrophobic regions bounded by crosslinks between lysine residues. Degradation products of the encoded protein, known as elastin-derived peptides or elastokines, bind the elastin receptor complex and other receptors and stimulate migration and proliferation of monocytes and skin fibroblasts.
-------------------	---

Immunogen	Polyclonal antibody is produced by immunizing animals with a synthetic peptide of Elastin.
------------------	--

Purification	Polyclonal antibody was purified by immunogen affinity chromatography.
---------------------	--

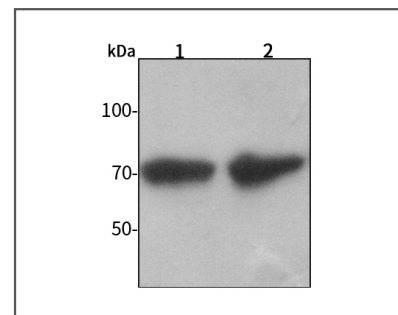
Anti-Elastin Rabbit pAb



WL04826

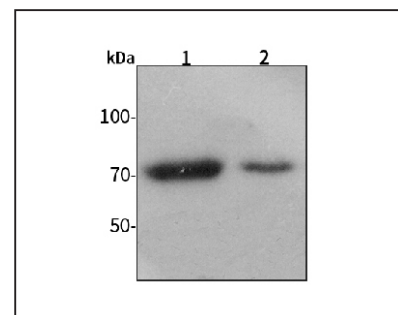
For Research Use Only. Not For Use In Diagnostic Procedures

Product Images



Western blot-Anti-Elastin pAb

Lane 1: Human Hela cell lysate
Lane 2: Human MCF-7 cell lysate
All lanes: Anti-Elastin at 1:1000 dilution
 Lysates/proteins at 20-50 µg per lane.
 Predicted band size: 68 kDa
 Observed band size: 68 kDa



Western blot-Anti-Elastin pAb

Lane 1: Mouse liver tissue lysate
Lane 2: Rat colon tissue lysate
All lanes: Anti-Elastin at 1:1000 dilution
 Lysates/proteins at 20-50 µg per lane.
 Predicted band size: 68 kDa
 Observed band size: 68 kDa