

## Anti-APCS/SAP Rabbit pAb



WL01343

For Research Use Only. Not For Use In Diagnostic Procedures

## Product Information

<b>Product name</b>	Anti-APCS/SAP Rabbit pAb	
<b>Source</b>	Rabbit	
<b>Species reactivity</b>	Human, Mouse, Rat	
<b>Tested applications</b>	WB	1:1000-1:2000
	IHC	1:100-1:400
	IF	1:500
<b>Cellular localization</b>	Secreted	
<b>Pack size</b>	50/100/200/500/1000μl	
<b>Storage</b>	Store at -20°C. <b>Avoid freeze/thaw cycles.</b>	
<b>Storage buffer</b>	Supplied in 20 mM phosphate (pH 7.5), 150 mM NaCl, 100 μg/ml	
	BSA, 50% glycerol and less than 0.02% sodium azide	

## General Information

<b>Background</b>	The APCS/SAP is a glycoprotein, belonging to the pentraxin family of proteins, which has a characteristic pentameric organization. Although the function of APCS/SAP has not been clearly established, it has been shown to interact with DNA and histones and is thought to play a role in scavenging nuclear material released from damaged circulating cells. This protein is also thought to control the degradation of chromatin. It has been demonstrated that this protein binds to apoptotic cells at an early stage, which raises the possibility that it is involved in dealing with apoptotic cells in vivo.
<b>Immunogen</b>	Polyclonal antibody is produced by immunizing animals with a synthetic peptide of APCS/SAP.
<b>Purification</b>	Polyclonal antibody was purified by protein A affinity chromatography.

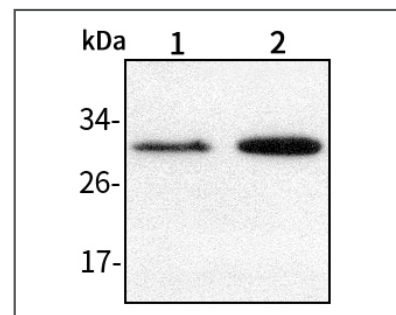
## Anti-APCS/SAP Rabbit pAb



WL01343

For Research Use Only. Not For Use In Diagnostic Procedures

## Product Images



Western blot-Anti-APCS/SAP pAb

Lane 1: Rat stomach tissue lysate

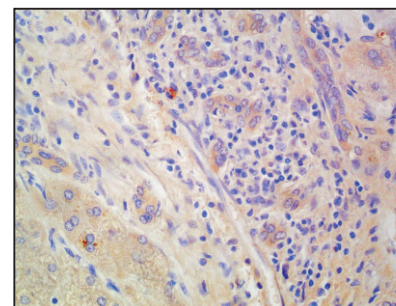
Lane 2: Rat kidney tissue lysate

All lanes: Anti-APCS/SAP at 1:1000 dilution

Lysates/proteins at 20-50 μg per lane.

Predicted band size: 25 kDa

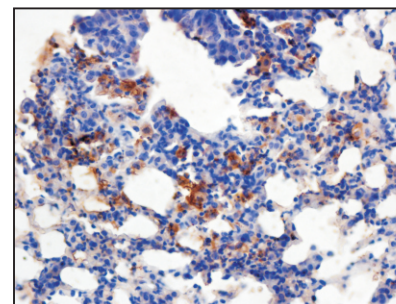
Observed band size: 25-30 kDa



Immunohistochemistry-Anti-APCS/SAP pAb

Immunohistochemical analysis of paraffin-embedded human liver cancer using anti-APCS/SAP Rabbit Antibody at 1:150 dilution.

Perform heat mediated antigen retrieval with Tris-EDTA buffer pH 9.0



Immunohistochemistry-Anti-APCS/SAP pAb

Immunohistochemical analysis of paraffin-embedded mouse lung using anti-APCS/SAP Rabbit Antibody at 1:150 dilution.

Perform heat mediated antigen retrieval with Tris-EDTA buffer pH 9.0

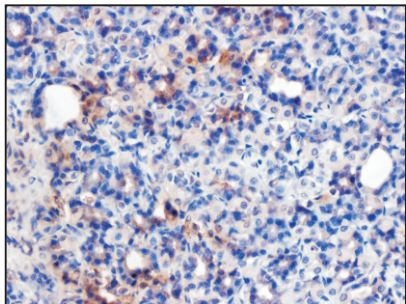
## Anti-APCS/SAP Rabbit pAb



WL01343

For Research Use Only. Not For Use In Diagnostic Procedures

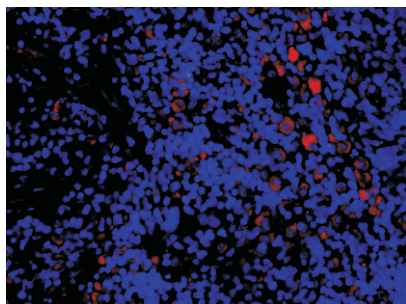
### Product Information



#### Immunohistochemistry-Anti-APCS/SAP pAb

Immunohistochemical analysis of paraffin-embedded rat stomach using anti-APCS/SAP Rabbit Antibody at 1:150 dilution.

Perform heat mediated antigen retrieval with Tris-EDTA buffer pH 9.0



#### Immunofluorescence-Anti-APCS/SAP pAb

Immunofluorescence analysis of paraffin-embedded rat spleen using anti-APCS/SAP Rabbit Antibody at 1:500 dilution.

Perform heat mediated antigen retrieval with Tris-EDTA buffer pH 9.0