

Anti-SYP Rabbit pAb



WL03058

For Research Use Only. Not For Use In Diagnostic Procedures

Product Information

Product name	Anti-SYP Rabbit pAb		
Source	Rabbit		
Species reactivity	Human, Mouse, Rat		
Tested applications	Western blot	1:500-1:1000	
	Immunohistochemistry	1:100-1:400	
	Immunofluorescence	1:200-1:300	
<i>*Suggested working dilutions are given as a guide only. It is recommended that the user titrates the product for use in their own experiment using appropriate negative and positive controls.</i>			
Molecular Wt.	38 kDa		
Pack size	50/100/200/500/1000μl		
Storage	Store at -20°C. Avoid freeze/thaw cycles.		
Storage buffer	Supplied in 20 mM phosphate (pH 7.5), 150 mM NaCl, 100 μg/ml		
	BSA, 50% glycerol and less than 0.02% sodium azide		

General Information

Background	This gene encodes an integral membrane protein of small synaptic vesicles in brain and endocrine cells. The protein also binds cholesterol and is thought to direct targeting of vesicle-associated membrane protein 2 (synaptobrevin) to intracellular compartments. SYP contains four transmembrane domains and may function as a gap junction-like channel. Membrane cholesterol specifically interacts with SYP to play a role in vesicle formation. Synaptobrevin (VAMP) also binds to SYP and the resultant complex is upregulated during neuronal development, but is absent in exocytosis fusion complex.
Immunogen	Polyclonal antibody is produced by immunizing animals with a synthetic peptide of SYP.
Purification	Polyclonal antibody was purified by immunogen affinity chromatography.

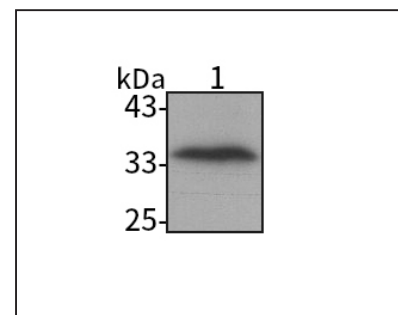
Anti-SYP Rabbit pAb



WL03058

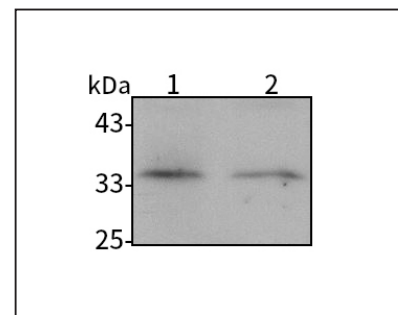
For Research Use Only. Not For Use In Diagnostic Procedures

Product Images



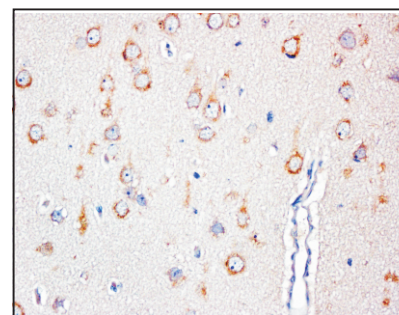
Western blot-Anti-SYP pAb

Lane 1: Human SH-SY5Y cell lysate
 All lanes: Anti-SYP at 1:1000 dilution
 Lysates/proteins at 20-50 μg per lane.
 Predicted band size: 34 kDa
 Observed band size: 34 kDa



Western blot-Anti-SYP pAb

Lane 1: Mouse brain tissue lysate
 Lane 2: Rat brain tissue lysate
 All lanes: Anti-SYP at 1:1000 dilution
 Lysates/proteins at 20-50 μg per lane.
 Predicted band size: 34 kDa
 Observed band size: 34 kDa



Immunohistochemistry-Anti-SYP pAb

Sample: Human brain glioma tissue
 Antigen retrieval: pH 9.0 Tris-EDTA buffer
 Primary antibody: 1:200, 4°C, overnight
 Secondary antibody-Biotin: 1:150, 37°C, 1h
 Streptavidin-HRP: 1:200, 37°C, 30min
 Color Developing: DAB

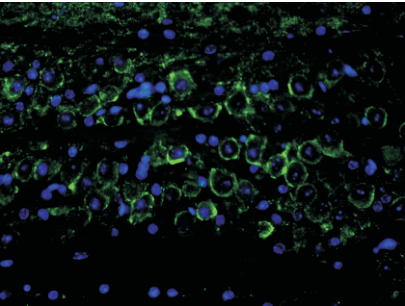
Anti-SYP Rabbit pAb



For Research Use Only. Not For Use In Diagnostic Procedures

WL03058

Product Information



Immunofluorescence-Anti-SYP pAb

Sample: Mouse cerebellum tissue

Primary antibody: 1:200, 4°C, overnight

Secondary antibody-FITC: 1:200, at room temperature, 1h