

Anti-T-bet Rabbit pAb



WL03236

For Research Use Only. Not For Use In Diagnostic Procedures

Product Information

Product name	Anti-T-bet Rabbit pAb		
Source	Rabbit		
Species reactivity	Human, Mouse, Rat		
Tested applications	Western blot	1:500-1:1000	
	<i>*Suggested working dilutions are given as a guide only. It is recommended that the user titrates the product for use in their own experiment using appropriate negative and positive controls.</i>		
Pack size	50/100/200/500/1000μl		
Storage	Store at -20°C. Avoid freeze/thaw cycles.		
Storage buffer	Supplied in 20 mM phosphate (pH 7.5), 150 mM NaCl, 100 μg/ml BSA, 50% glycerol and less than 0.02% sodium azide		

General Information

Background	The T-box gene family consists of transcription factors characterized by a related DNA-binding domain (T-box) of approximately 200 amino acids. The T-box genes exhibit diverse temporal and spatial patterns in the developing embryo. TBX21 is a member of a phylogenetically conserved family of proteins that share a common DNA-binding domain, the T-box. TBX21 is the human ortholog of mouse Tbx21/Tbet protein. Studies in mouse show that Tbx21 protein is a Th1 cell-specific transcription factor that controls the expression of the hallmark Th1 cytokine, interferon-gamma (IFNG). Expression of the human ortholog also correlates with IFNG expression in Th1 and natural killer cells, suggesting a role for this gene in initiating Th1 lineage development from naive Th precursor cells.
Immunogen	Polyclonal antibody is produced by immunizing animals with a synthetic peptide of T-bet.
Purification	Polyclonal antibody was purified by immunogen affinity chromatography.

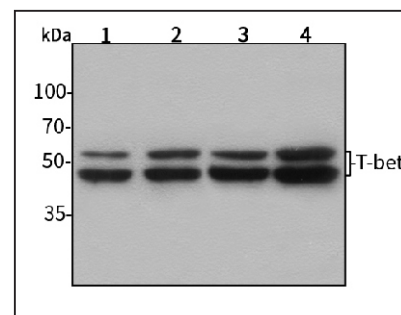
Anti-T-bet Rabbit pAb



WL03236

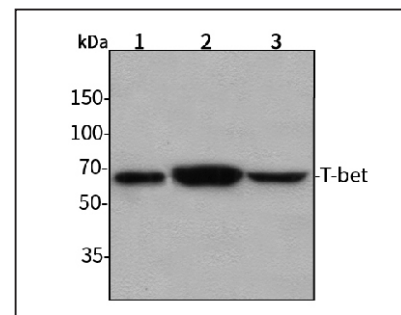
For Research Use Only. Not For Use In Diagnostic Procedures

Product Images



Western blot-Anti-T-bet pAb

Lane 1: Human Hela cell lysate 30μg
 Lane 2: Human BGC-823 cell lysate 30μg
 Lane 3: Human SGC-7901 cell lysate 30μg
 Lane 4: Human MCF-7 cell lysate 30μg
 All lanes: Anti-T-bet at 1:1000 dilution
 Lysates/proteins at 20-50 μg per lane.
 Predicted band size: 58 kDa
 Observed band size: 60-62 kDa



Western blot-Anti-T-bet pAb

Lane 1: Mouse liver tissue lysate
 Lane 2: Mouse brain tissue lysate
 Lane 3: Rat lung tissue lysate
 All lanes: Anti-T-bet at 1:1000 dilution
 Lysates/proteins at 20-50 μg per lane.
 Predicted band size: 58 kDa
 Observed band size: 60-62 kDa