

Anti-Ubiquitin/Ub Rabbit pAb



WL01368

For Research Use Only. Not For Use In Diagnostic Procedures

Product Information

Product name	Anti-Ubiquitin/Ub Rabbit pAb	
Source	Rabbit	
Species reactivity	Human, Mouse, Rat	
Tested applications	WB	1:1000-1:2000
	IHC	1:100
Cellular localization	Cell Membrane, Cytoplasmic and Nuclear	
Pack size	50/100/200/500/1000µl	
Storage	Store at -20°C. Avoid freeze/thaw cycles.	
Storage buffer	Supplied in 20 mM phosphate (pH 7.5), 150 mM NaCl, 100 µg/ml	
	BSA, 50% glycerol and less than 0.02% sodium azide	

General Information

Background	Ubiquitin is a conserved polypeptide unit that plays an important role in the ubiquitin-proteasome pathway. The primary function of ubiquitin is to clear abnormal, foreign and improperly folded proteins by targeting them for degradation by the 26S proteasome. This small, 76 amino acid protein can be covalently attached to cellular proteins via an isopeptide linkage between the carboxy terminal group of ubiquitin and lysine amino groups on the acceptor protein. Several proteins such as IκB, p53, cdc25A, and Bcl-2 have been shown to be targets for the ubiquitin-proteasome process as part of regulation of cell cycle progression, differentiation, cell stress response, and apoptosis.
Immunogen	Polyclonal antibody is produced by immunizing animals with a synthetic peptide of Ubiquitin/Ub.
Purification	Polyclonal antibody was purified by Protein A affinity chromatography.

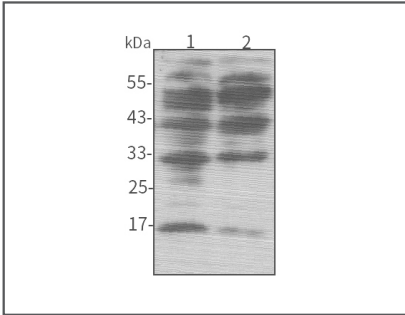
Anti-Ubiquitin/Ub Rabbit pAb



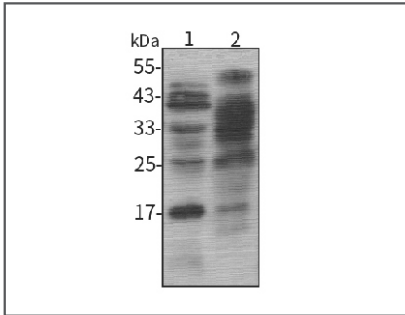
WL01368

For Research Use Only. Not For Use In Diagnostic Procedures

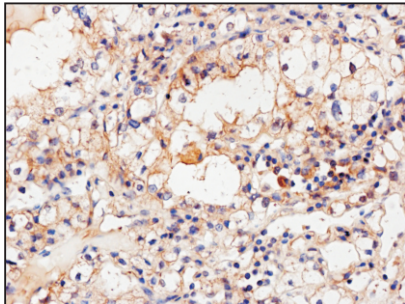
Product Images



Western blot-Anti-Ubiquitin/Ub pAb
Lane 1: Human HEK-293 cell lysate
Lane 2: Human HCT116 cell lysate
All lanes: Anti-Ubiquitin/Ub at 1:1000 dilution
Lysates/proteins at 20-50 µg per lane.
Predicted band size: 8.5 kDa



Western blot-Anti-Ubiquitin/Ub pAb
Lane 1: Mouse liver tissue lysate
Lane 2: Rat lung tissue lysate
All lanes: Anti-Ubiquitin/Ub at 1:1000 dilution
Lysates/proteins at 20-50 µg per lane.
Predicted band size: 8.5 kDa



Immunohistochemistry-Anti-Ubiquitin/Ub pAb
Immunohistochemical analysis of paraffin-embedded human kidney cancer using anti-Ubiquitin/Ub Rabbit Antibody at 1:100 dilution. Perform heat mediated antigen retrieval with Tris-EDTA buffer pH 9.0

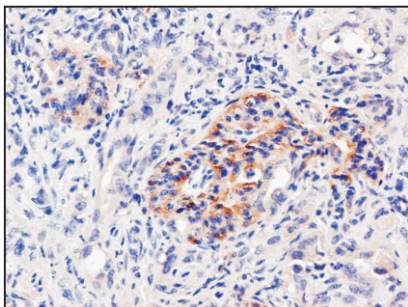
Anti-Ubiquitin/Ub Rabbit pAb



WL01368

For Research Use Only. Not For Use In Diagnostic Procedures

Product Information



Immunohistochemistry-Anti-Ubiquitin/Ub pAb

Immunohistochemical analysis of paraffin-embedded human pancreatic cancer using anti-Ubiquitin/Ub Rabbit Antibody at 1:100 dilution.

Perform heat mediated antigen retrieval with Tris-EDTA buffer pH 9.0