

Anti-PCNA Rabbit pAb



WL03213

For Research Use Only. Not For Use In Diagnostic Procedures

Product Information

Product name	Anti-PCNA Rabbit pAb	
Source	Rabbit	
Species reactivity	Human, Mouse, Rat	
Tested applications	Western blot	1:500-1:1000
	Immunohistochemistry	1:100-1:400
	Immunofluorescence	1:100-1:400
Cellular localization	Nucleus.	
Pack size	50/100/200/500/1000μl	
Storage	Store at -20°C. Avoid freeze/thaw cycles.	
Storage buffer	Supplied in 20 mM phosphate (pH 7.5), 150 mM NaCl, 100 μg/ml	
	BSA, 50% glycerol and less than 0.02% sodium azide	

General Information

Background	The proliferating cell nuclear antigen (PCNA), a protein synthesized in early G1 and S phases of the cell cycle, functions in cell cycle progression, DNA replication and DNA repair. In early S phase, PCNA exhibits granular distribution and is absent from the nucleoli; however, in late S phase, it relocates to the nucleoli. PCNA exists in two basic forms: one involved in ongoing DNA replication, which localizes specifically to the nucleus, and a second, soluble form, not implicated in constant synthesis. Interestingly, the latter form degrades in the presence of organic solvents, rendering it undetectable by histological methods in tissues using organic fixatives, and thus also providing a method of visualizing only the synthesizing form.
Immunogen	Polyclonal antibody is produced by immunizing animals with a synthetic peptide of PCNA.
Purification	Polyclonal antibody was purified by immunogen affinity chromatography.

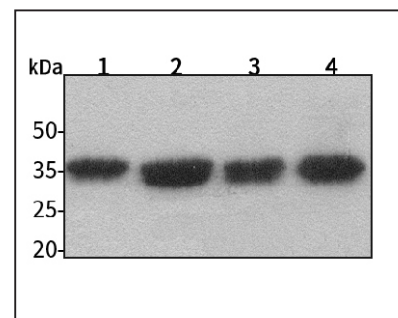
Anti-PCNA Rabbit pAb



WL03213

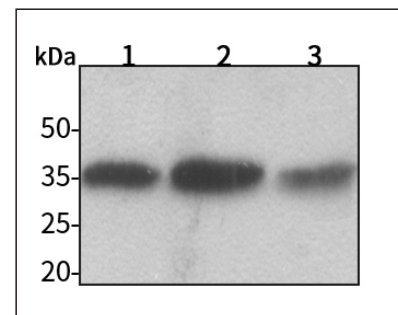
For Research Use Only. Not For Use In Diagnostic Procedures

Product Images



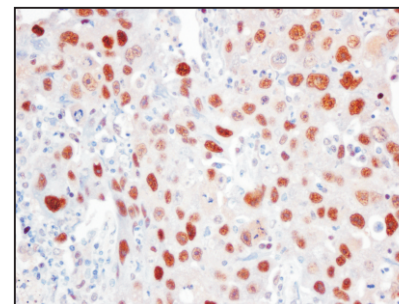
Western blot-Anti-PCNA pAb

Lane 1: Human HEK293 cell Nuclear Protein
 Lane 2: Human A549 cell Nuclear Protein
 Lane 3: Human HUVEC cell Nuclear Protein
 Lane 4: Human SW480 cell Nuclear Protein
 All lanes: Anti-PCNA at 1:1000 dilution
 Lysates/proteins at 20-50 μg per lane.
 Predicted band size: 29 kDa
 Observed band size: 36-38 kDa



Western blot-Anti-PCNA pAb

Lane 1: Mouse colon tissue Nuclear Protein
 Lane 2: Rat spleen tissue Nuclear Protein
 Lane 3: Rat stomach tissue Nuclear Protein
 All lanes: Anti-PCNA at 1:1000 dilution
 Lysates/proteins at 20-50 μg per lane.
 Predicted band size: 29 kDa
 Observed band size: 36-38 kDa



Immunohistochemistry-Anti-PCNA pAb

Sample: Human lung cancer tissue
 Antigen retrieval: pH 9.0 Tris-EDTA buffer
 Primary antibody: 1:200, 4°C, overnight
 Secondary antibody-Biotin: 1:150, 37°C, 1h
 Streptavidin-HRP: 1:200, 37°C, 30min
 Visualization: DAB

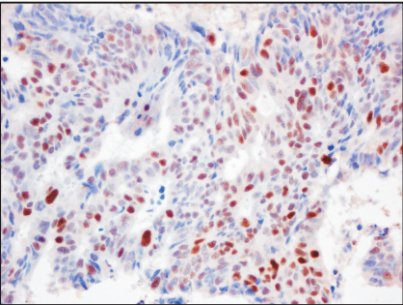
Anti-PCNA Rabbit pAb

For Research Use Only. Not For Use In Diagnostic Procedures

Product Information

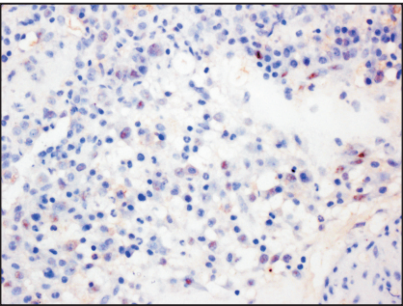


WL03213



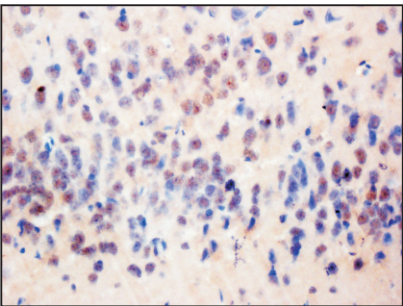
Immunohistochemistry-Anti-PCNA pAb

Sample: Human colon cancer tissue
Antigen retrieval: pH 9.0 Tris-EDTA buffer
Primary antibody: 1:200, 4°C, overnight
Secondary antibody-Biotin: 1:150, 37°C, 1h
Streptavidin-HRP: 1:200, 37°C, 30min
Visualization: DAB



Immunohistochemistry-Anti-PCNA pAb

Sample: Rat lung tissue
Antigen retrieval: pH 9.0 Tris-EDTA buffer
Primary antibody: 1:200, 4°C, overnight
Secondary antibody-Biotin: 1:150, 37°C, 1h
Streptavidin-HRP: 1:200, 37°C, 30min
Visualization: DAB



Immunohistochemistry-Anti-PCNA pAb

Sample: Rat brain tissue
Antigen retrieval: pH 9.0 Tris-EDTA buffer
Primary antibody: 1:200, 4°C, overnight
Secondary antibody-Biotin: 1:150, 37°C, 1h
Streptavidin-HRP: 1:200, 37°C, 30min
Visualization: DAB

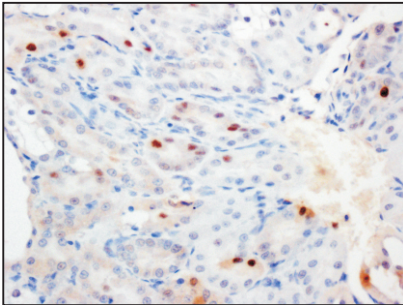
Anti-PCNA Rabbit pAb

For Research Use Only. Not For Use In Diagnostic Procedures

Product Images

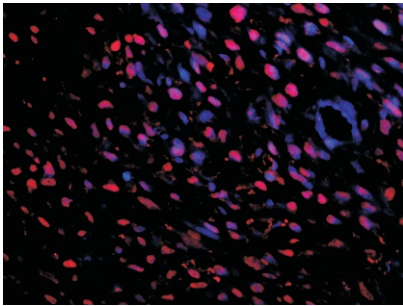


WL03213



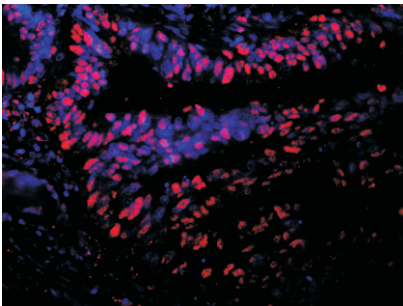
Immunohistochemistry-Anti-PCNA pAb

Sample: Rat kidney tissue
Antigen retrieval: pH 9.0 Tris-EDTA buffer
Primary antibody: 1:200, 4°C, overnight
Secondary antibody-Biotin: 1:150, 37°C, 1h
Streptavidin-HRP: 1:200, 37°C, 30min
Visualization: DAB



Immunofluorescence-Anti-PCNA pAb

Sample: Human lung cancer tissue
Primary antibody: 1:200, 4°C, overnight
Secondary antibody-CY3: 1:200, at room temperature, 1h



Immunofluorescence-Anti-PCNA pAb

Sample: Human colon cancer tissue
Primary antibody: 1:200, 4°C, overnight
Secondary antibody-CY3: 1:200, at room temperature, 1h

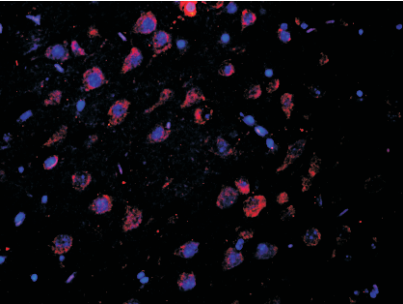
Anti-PCNA Rabbit pAb

For Research Use Only. Not For Use In Diagnostic Procedures



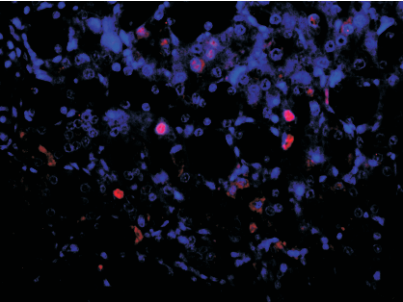
WL03213

Product Information



Immunofluorescence-Anti-PCNA pAb

Sample: Mouse brain tissue
Primary antibody: 1:200, 4°C, overnight
Secondary antibody-CY3: 1:200, at room temperature, 1h



Immunofluorescence-Anti-PCNA pAb

Sample: Rat kidney tissue
Primary antibody: 1:200, 4°C, overnight
Secondary antibody-CY3: 1:200, at room temperature, 1h