

## Anti-CD19 Rabbit pAb



WL03457

For Research Use Only. Not For Use In Diagnostic Procedures

## Product Information

<b>Product name</b>	Anti-CD19 Rabbit pAb
<b>Source</b>	Rabbit
<b>Species reactivity</b>	Human, Mouse, Rat
<b>Tested applications</b>	WB 1:1000-1:2000
<b>Pack size</b>	50/100/200/500/1000μl
<b>Storage</b>	Store at -20°C. <b>Avoid freeze/thaw cycles.</b>
<b>Storage buffer</b>	Supplied in 20 mM phosphate (pH 7.5), 150 mM NaCl, 100 μg/ml BSA, 50% glycerol and less than 0.02% sodium azide

## General Information

<b>Background</b>	Cd19 is a transmembrane glycoprotein that contains two extracellular immunoglobulin-like domains. It primarily acts as a B cell co-receptor in conjunction with CD21 and CD81. Upon activation, the cytoplasmic tail of CD19 becomes phosphorylated, which leads to binding by Src-family kinases and recruitment of PI-3 kinase. Mutations in CD19 are associated with severe immunodeficiency syndromes characterized by diminished antibody production. CD19 has also been implicated in autoimmune diseases and may be a useful treatment target.
-------------------	---

<b>Immunogen</b>	Polyclonal antibody is produced by immunizing animals with a synthetic peptide of CD19.
------------------	---

<b>Purification</b>	Polyclonal antibody was purified by Protein A affinity chromatography.
---------------------	--

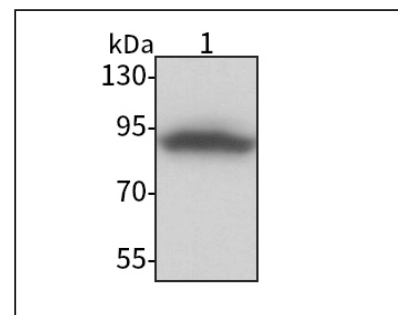
## Anti-CD19 Rabbit pAb



WL03457

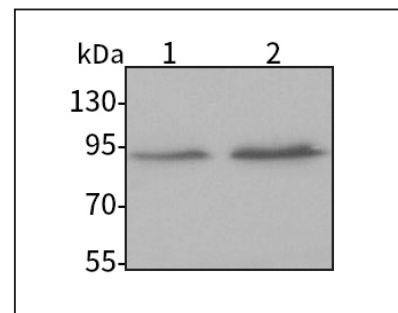
For Research Use Only. Not For Use In Diagnostic Procedures

## Product Images



Western blot-AntiCD19 pAb

Lane 1: Human Raji cell lysate  
 All lanes: Anti-CD19 at 1:1000 dilution  
 Lysates/proteins at 20-50 μg per lane.  
 Predicted band size: 61 kDa  
 Observed band size: 60-120 kDa



Western blot-AntiCD19 pAb

Lane 1: Mouse spleen tissue lysate  
 Lane 2: Rat spleen tissue lysate  
 All lanes: Anti-CD19 at 1:1000 dilution  
 Lysates/proteins at 20-50 μg per lane.  
 Predicted band size: 61 kDa  
 Observed band size: 60-120 kDa