

## Anti-SNCA Rabbit pAb



WL05015

For Research Use Only. Not For Use In Diagnostic Procedures

## Product Information

<b>Product name</b>	Anti-SNCA Rabbit pAb	
<b>Source</b>	Rabbit	
<b>Species reactivity</b>	Human, Mouse, Rat	
<b>Tested applications</b>	WB	1:500-1:1000
	IHC, IF	1:100-1:200
<b>Cellular localization</b>	Cytoplasm. Membrane. Nucleus. Cell junction, synapse. Secreted.	
<b>Pack size</b>	50/100/200/500/1000μl	
<b>Storage</b>	Store at -20°C. <b>Avoid freeze/thaw cycles.</b>	
<b>Storage buffer</b>	Supplied in 20 mM phosphate (pH 7.5), 150 mM NaCl, 100 μg/ml	
	BSA, 50% glycerol and less than 0.02% sodium azide	

## General Information

<b>Background</b>	Alpha-synuclein is a member of the synuclein family. The synuclein family members, including $\alpha$ -synuclein and $\beta$ -synuclein, are predominantly expressed in the brain where they influence synaptic regulation and neuronal plasticity. Hyper-phosphorylated forms of $\alpha$ -syn protein are the pathological hallmark of Lewy body disease, which includes Parkinson's disease (PD), diffuse Lewy body disease (DLBD), and Lewy body variant of Alzheimer's disease (LBV).
<b>Immunogen</b>	Polyclonal antibody is produced by immunizing animals with a synthetic peptide of SNCA.
<b>Purification</b>	Polyclonal antibody was purified by immunogen affinity chromatography.

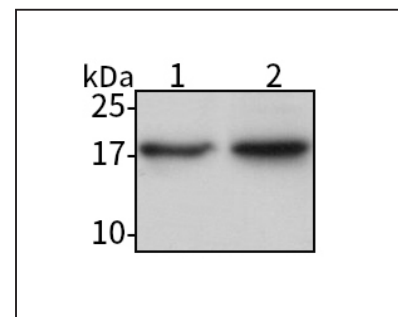
## Anti-SNCA Rabbit pAb



WL05015

For Research Use Only. Not For Use In Diagnostic Procedures

## Product Images



## Western blot-Anti-SNCA pAb

Lane 1: Human A2780 cell lysate

Lane 2: Human Hela cell lysate

All lanes: Anti-SNCA at 1:1000 dilution

Lysates/proteins at 20-50 μg per lane.

Predicted band size: 14 kDa

Observed band size: 18 kDa