

Anti-CDK2 Rabbit pAb



WL02028

For Research Use Only. Not For Use In Diagnostic Procedures

Product Information

Product name	Anti-CDK2 Rabbit pAb		
Source	Rabbit		
Species reactivity	Mouse, Rat		
Tested applications	WB	1:1000-1:2000	
Pack size	50/100/200/500/1000µl		
Storage	Store at -20°C. Avoid freeze/thaw cycles.		
Storage buffer	Supplied in 20 mM phosphate (pH 7.5), 150 mM NaCl, 100 µg/ml BSA, 50% glycerol and less than 0.02% sodium azide		

General Information

Background	This gene encodes a member of a family of serine/threonine protein kinases that participate in cell cycle regulation. The encoded protein is the catalytic subunit of the cyclin-dependent protein kinase complex, which regulates progression through the cell cycle. Like p34cdc2, kinase activity is regulated by phosphorylation state as well as association with a cyclin subunit and a CDK inhibitor. Inhibition of CDK2-cyclin complexes can also be attributed to association with p27 Kip1 and p21 Waf1/Cip1. Activation of CDK2 complexes requires dephosphorylation of Thr14 and Tyr15 by cdc25 phosphatase and phosphorylation of Thr160, which is mediated by CAK, a complex of CDK7 and cyclin H.
Immunogen	Polyclonal antibody is produced by immunizing animals with a synthetic peptide of CDK2.
Purification	Polyclonal antibody was purified by protein A affinity chromatography.

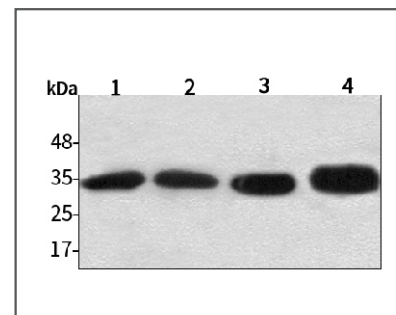
Anti-CDK2 Rabbit pAb



WL02028

For Research Use Only. Not For Use In Diagnostic Procedures

Product Images



Western blot-Anti-CDK2 pAb

Lane 1: Mouse colon tissue lysate

Lane 2: Mouse lung tissue lysate

Lane 3: Rat skin tissue lysate

Lane 4: Rat heart tissue lysate

All lanes: Anti-CDK2 at 1:1000 dilution

Lysates/proteins at 20-50 µg per lane.

Predicted band size: 34 kDa

Observed band size: 34 kDa