

## Anti-TGFβ RII Rabbit pAb



WL02714

For Research Use Only. Not For Use In Diagnostic Procedures

## Product Information

<b>Product name</b>	Anti-TGFβ RII Rabbit pAb	
<b>Source</b>	Rabbit	
<b>Species reactivity</b>	Human	
<b>Tested applications</b>	WB	1:1000-1:2000
	IHC	1:100-1:400
	IF	1:500
<b>Cellular localization</b>	Cell membrane	
<b>Pack size</b>	50/100/200/500/1000μl	
<b>Storage</b>	Store at -20°C. <b>Avoid freeze/thaw cycles.</b>	
<b>Storage buffer</b>	Supplied in 20 mM phosphate (pH 7.5), 150 mM NaCl, 100 μg/ml	
	BSA, 50% glycerol and less than 0.02% sodium azide	

## General Information

<b>Background</b>	Transforming growth factor-β (TGF-β) superfamily members are critical regulators of cell proliferation and differentiation, developmental patterning and morphogenesis, and disease pathogenesis. TGFβs mediate their activity by high affinity binding to the type II receptor (TGFβ RII) transmembrane protein with a cytoplasmic serine-threonine kinase domain. For signaling growth inhibition and early gene responses, TGFβ RII requires both its kinase activity and association with a TGFβ-binding protein, designated the type I receptor. TGFβ RII exists as two alternatively spliced isoforms that are encoded by a gene that maps to human chromosome 3.
<b>Immunogen</b>	Polyclonal antibody is produced by immunizing animals with a synthetic peptide of TGFβ RII.
<b>Purification</b>	Polyclonal antibody was purified by Protein A affinity chromatography.

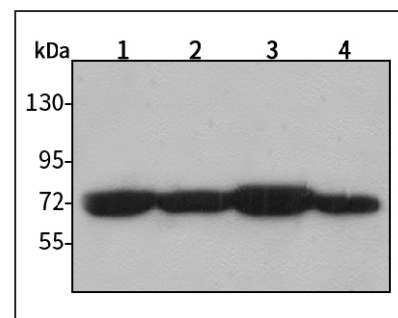
## Anti-TGFβ RII Rabbit pAb



WL02714

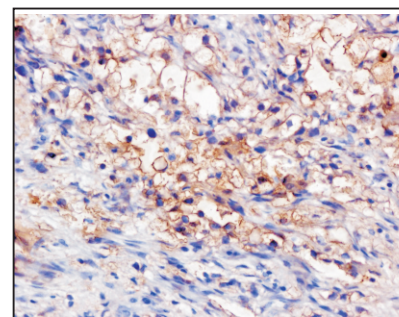
For Research Use Only. Not For Use In Diagnostic Procedures

## Product Images



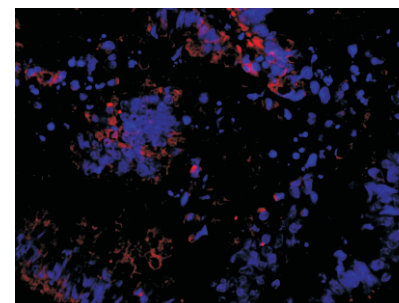
Western blot-Anti-TGFβ RII pAb

Lane 1: Human HepG2 cell lysate  
 Lane 2: Human Hela cell lysate  
 Lane 3: Human BGC-823 cell lysate  
 Lane 4: Human MGC-803 cell lysate  
 All lanes: Anti-TGFβ RII at 1:1000 dilution  
 Lysates/proteins at 20-50 μg per lane.  
 Predicted band size: 65 kDa  
 Observed band size: 65 kDa



Immunohistochemistry-Anti-TGFβ RII pAb

Immunohistochemical analysis of paraffin-embedded human stomach cancer using anti-TGFβ RII Rabbit Antibody at 1:150 dilution.  
 Perform heat mediated antigen retrieval with Tris-EDTA buffer pH 9.0



Immunofluorescence-Anti-TGFβ RII pAb

Immunofluorescence analysis of paraffin-embedded human rectum cancer using anti-TGFβ RII Rabbit Antibody at 1:500 dilution.  
 Perform heat mediated antigen retrieval with Tris-EDTA buffer pH 9.0

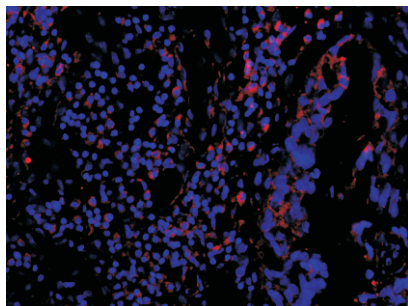
## Anti-TGF $\beta$ RII Rabbit pAb



WL02714

For Research Use Only. Not For Use In Diagnostic Procedures

### Product Information



#### Immunofluorescence-Anti-TGF $\beta$ RII pAb

Immunofluorescence analysis of paraffin-embedded human bladder cancer using anti-TGF $\beta$  RII Rabbit Antibody at 1:500 dilution.

Perform heat mediated antigen retrieval with Tris-EDTA buffer pH 9.0