

Anti-ADAM17 Rabbit pAb



WL04487

For Research Use Only. Not For Use In Diagnostic Procedures

Product Information

Product name	Anti-ADAM17 Rabbit pAb		
Source	Rabbit		
Species reactivity	Human, Mouse, Rat		
Tested applications	WB	1:1000-1:2000	
	IHC	1:500	
	IF	1:500	
Cellular localization	Membrane		
Pack size	50/100/200/500/1000μl		
Storage	Store at -20°C. Avoid freeze/thaw cycles.		
Storage buffer	Supplied in 20 mM phosphate (pH 7.5), 150 mM NaCl, 100 μg/ml		
	BSA, 50% glycerol and less than 0.02% sodium azide		

General Information

Background	ADAMs is a member of the ADAM (a disintegrin and metalloprotease domain) family. Preproprotein is proteolytically processed to generate the mature protease. The encoded protease functions in the ectodomain shedding of tumor necrosis factor- α , in which soluble tumor necrosis factor- α is released from the membrane-bound precursor. The protease also plays a prominent role in the activation of the Notch signaling pathway.
Immunogen	Polyclonal antibody is produced by immunizing animals with a synthetic peptide of ADAM17.
Purification	Polyclonal antibody was purified by Protein A affinity chromatography.

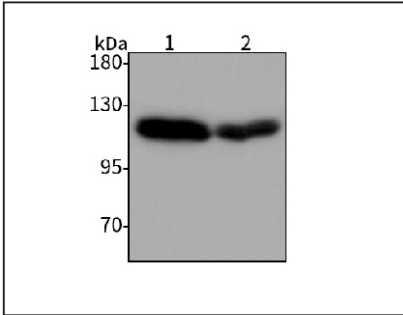
Anti-ADAM17 Rabbit pAb



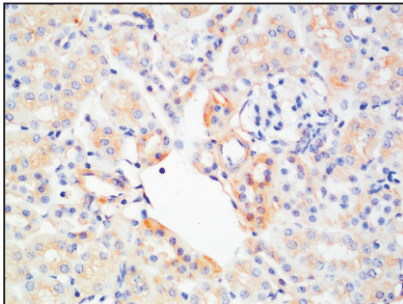
WL04487

For Research Use Only. Not For Use In Diagnostic Procedures

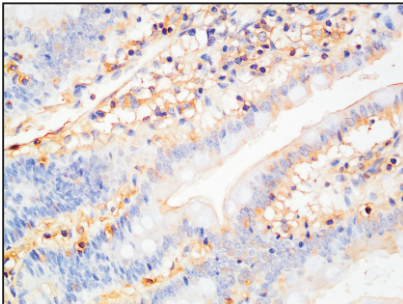
Product Images



Western blot-Anti-ADAM17 pAb
Lane 1: Mouse lung tissue lysate
Lane 2: Rat colon tissue lysate
All lanes: Anti-ADAM17 at 1:1000 dilution
Lysates/proteins at 20-50 μg per lane.
Predicted band size: 93 kDa
Observed band size: 100-130 kDa



Immunohistochemistry-Anti-ADAM17 pAb
Immunohistochemical analysis of paraffin-embedded mouse kidney using anti-ADAM17 Rabbit Antibody at 1:500 dilution.
Perform heat mediated antigen retrieval with Tris-EDTA buffer pH 9.0



Immunohistochemistry-Anti-ADAM17 pAb
Immunohistochemical analysis of paraffin-embedded rat colon using anti-ADAM17 Rabbit Antibody at 1:500 dilution.
Perform heat mediated antigen retrieval with Tris-EDTA buffer pH 9.0

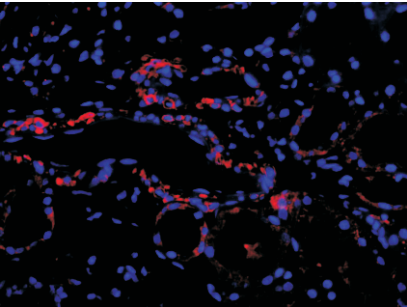
Anti-ADAM17 Rabbit pAb



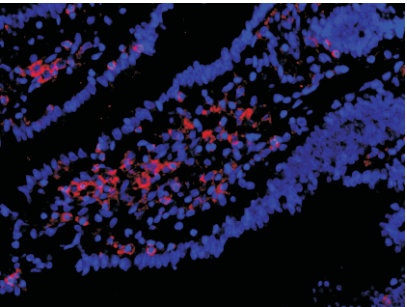
For Research Use Only. Not For Use In Diagnostic Procedures

WL04487

Product Information



Immunofluorescence-Anti-ADAM17 pAb
Immunofluorescence analysis of paraffin-embedded human kidney using anti-ADAM17 Rabbit Antibody at 1:500 dilution.
Perform heat mediated antigen retrieval with Tris-EDTA buffer pH 9.0



Immunofluorescence-Anti-ADAM17 pAb
Immunofluorescence analysis of paraffin-embedded rat colon using anti-ADAM17 Rabbit Antibody at 1:500 dilution.
Perform heat mediated antigen retrieval with Tris-EDTA buffer pH 9.0