

Anti-P-TAU (S396) Rabbit pAb



WL03540

For Research Use Only. Not For Use In Diagnostic Procedures

Product Information

Product name	Anti-P-TAU (S396) Rabbit pAb	
Source	Rabbit	
Species reactivity	Human, Mouse, Rat	
Tested applications	WB	1:1000-1:2000
	IHC	1:500
	IF	1:100-1:500
Molecular Wt.	50-80 kDa	
Cellular localization	Cytoplasm. Cell membrane. Cytoplasm. Cell projection.	
Pack size	50/100/200/500/1000μl	
Storage	Store at -20°C. Avoid freeze/thaw cycles.	
Storage buffer	Supplied in 20 mM phosphate (pH 7.5), 150 mM NaCl, 100 μg/ml	
	BSA, 50% glycerol and less than 0.02% sodium azide	

General Information

Background

Tau protein is a highly soluble microtubule-associated protein (MAP). In humans, these proteins are found mostly in neurons compared to non-neuronal cells. Tau is a phosphoprotein with 79 potential Serine (Ser) and Threonine (Thr) phosphorylation sites on the longest tau isoform. The abnormally hyperphosphorylated microtubule-associated protein Tau (p-Tau) inhibits microtubule assembly and disrupts microtubules by competing with tubulin/microtubules in associating with normal Tau, MAP1 and MAP2. p-Tau can be dephosphorylated by protein phosphatase PP-2B, PP-2A and PP-1, which are all present in neurons. p-Tau is predominately present in neuronal somata and dendrites and, to a lesser extent in axons.

Immunogen

Polyclonal antibody is produced by immunizing animals with a synthetic peptide of P-TAU (S396).

Purification

Polyclonal antibody was purified by Protein A affinity chromatography.

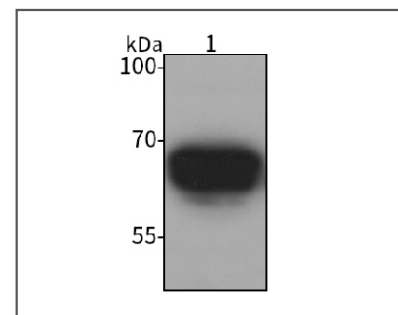
Anti-P-TAU (S396) Rabbit pAb



WL03540

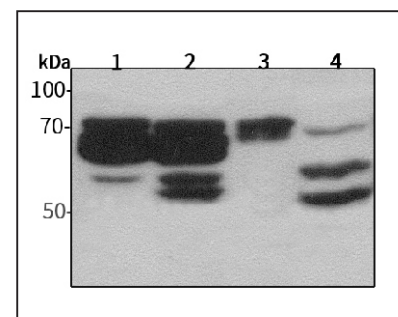
For Research Use Only. Not For Use In Diagnostic Procedures

Product Images



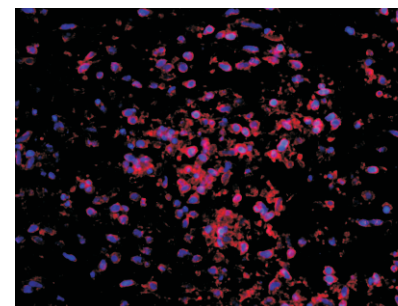
Western blot-Anti-P-TAU (S396) pAb

Lane 1: Human SH-SY5Y cell lysate 30μg
 Separation gel: 10% polyacrylamide
 Electrophoresis: 100V, 4°C, 3h
 Transmembrane: 100V, 4°C, 1h
 Blocking: 5% w/v nonfat dry milk, 1×TBST, at RT with gentle shaking
 Primary antibody: 1:1000 in blocking buffer, 4°C, overnight
 Secondary antibody (WLA023a) : 1:5000-1:10000, 45min
 Detection: ECL, 30s-2min



Western blot-Anti-P-TAU (S396) pAb

Lane 1: Mouse brain tissue lysate 30μg
 Lane 2: Mouse cerebellum tissue lysate 30μg
 Lane 3: Rat brain tissue lysate 30μg
 Lane 4: Rat cerebellum tissue lysate 30μg
 Separation gel: 10% polyacrylamide
 Electrophoresis: 100V, 4°C, 3h
 Transmembrane: 100V, 4°C, 1h
 Blocking: 5% w/v nonfat dry milk, 1×TBST, at RT with gentle shaking
 Primary antibody: 1:1000 in blocking buffer, 4°C, overnight
 Secondary antibody (WLA023a) : 1:5000-1:10000, 45min
 Detection: ECL, 30s-2min



Immunofluorescence-Anti-P-TAU (S396) pAb

Immunofluorescence analysis of paraffin-embedded human brain glioma using anti-P-TAU (S396) Rabbit Antibody at 1:200 dilution.
 Perform heat mediated antigen retrieval with Tris-EDTA buffer pH 9.0

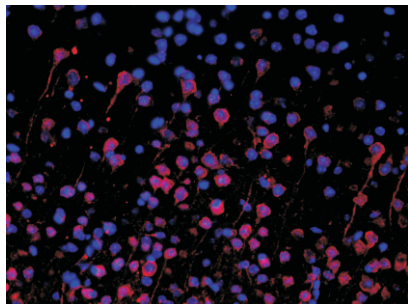
Anti-P-TAU (S396) Rabbit pAb



WL03540

For Research Use Only. Not For Use In Diagnostic Procedures

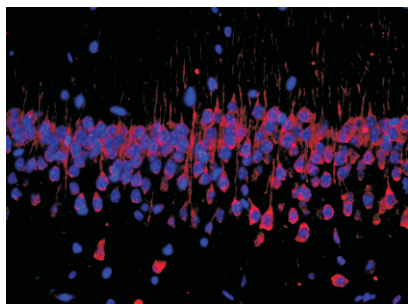
Product Information



Immunofluorescence-Anti-P-TAU (S396) pAb

Immunofluorescence analysis of paraffin-embedded mouse cerebral using anti-P-TAU (S396) Rabbit Antibody at 1:500 dilution.

Perform heat mediated antigen retrieval with Tris-EDTA buffer pH 9.0



Immunofluorescence-Anti-P-TAU (S396) pAb

Immunofluorescence analysis of paraffin-embedded mouse hippocampus using anti-P-TAU (S396) Rabbit Antibody at 1:500 dilution.

Perform heat mediated antigen retrieval with Tris-EDTA buffer pH 9.0