

Anti-Delta/DLL1 Rabbit pAb



WL00968

For Research Use Only. Not For Use In Diagnostic Procedures

Product Information

Product name	Anti-Delta/DLL1 Rabbit pAb		
Source	Rabbit		
Species reactivity	Human, Mouse, Rat		
Tested applications	WB	1:1000-1:2000	
Pack size	50/100/200/500/1000μl		
Storage	Store at -20°C. Avoid freeze/thaw cycles.		
Storage buffer	Supplied in 20 mM phosphate (pH 7.5), 150 mM NaCl, 100 μg/ml BSA, 50% glycerol and less than 0.02% sodium azide		

General Information

Background	Delta-like protein 1 (DLL1) is a type I transmembrane protein that belongs to the Delta/Serrate/Lag-2 (DSL) family of Notch ligands. Mature human DLL1 consists of a 528 amino acid (aa) extracellular domain (ECD) with one DSL domain and eight EGF-like repeats, a 23 aa transmembrane segment, and a 155 aa cytoplasmic domain. The intracellular domain of Notch is released and then translocates to the nucleus where it activates transcription. Notch ligands may also be processed in a way similar to Notch, suggesting a bi-directional signaling through receptor-ligand interactions.
Immunogen	Polyclonal antibody is produced by immunizing animals with a synthetic peptide of Delta/DLL1.
Purification	Polyclonal antibody was purified by Protein A affinity chromatography.

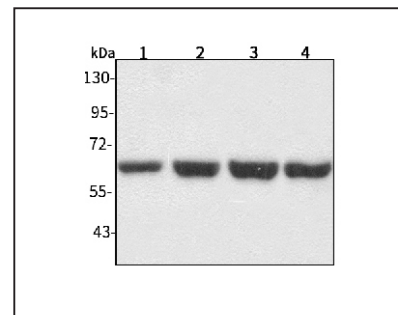
Anti-Delta/DLL1 Rabbit pAb



WL00968

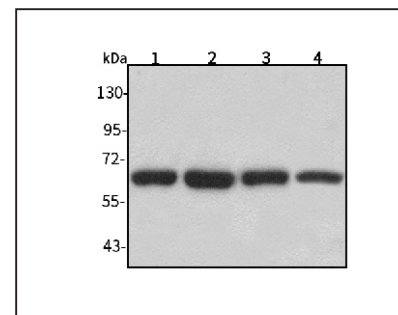
For Research Use Only. Not For Use In Diagnostic Procedures

Product Images



Western blot-Anti-Delta/DLL1 pAb

Lane 1: Human HepG2 cell lysate
 Lane 2: Human Hela cell lysate
 Lane 3: Human BGC-823 cell lysate
 Lane 4: Human MGC-803 cell lysate
 All lanes: Anti-Delta/DLL1 at 1:1000 dilution
 Lysates/proteins at 20-50 μg per lane.
 Predicted band size: 78 kDa
 Observed band size: 70-82 kDa



Western blot-Anti-Delta/DLL1 pAb

Lane 1: Mouse kidney tissue lysate
 Lane 2: Mouse heart tissue lysate
 Lane 3: Rat brain tissue lysate
 Lane 4: Rat stomach tissue lysate
 All lanes: Anti-Delta/DLL1 at 1:1000 dilution
 Lysates/proteins at 20-50 μg per lane.
 Predicted band size: 78 kDa
 Observed band size: 70-82 kDa