

Anti-Synaptopodin Rabbit pAb



WL04397

For Research Use Only. Not For Use In Diagnostic Procedures

Product Information

Product name	Anti-Synaptopodin Rabbit pAb	
Source	Rabbit	
Species reactivity	Human, Mouse, Rat	
Tested applications	WB	1:500-1:1000
	IHC	1:200
Cellular localization	Cytoplasm. Cell junction	
Pack size	50/100/200/500/1000μl	
Storage	Store at -20°C. Avoid freeze/thaw cycles.	
Storage buffer	Supplied in 20 mM phosphate (pH 7.5), 150 mM NaCl, 100 μg/ml	
	BSA, 50% glycerol and less than 0.02% sodium azide	

General Information

Background	Synaptopodin is an actin-associated protein that may play a role in actin-based cell shape and motility. Seems to be essential for the formation of spine apparatuses in spines of telencephalic neurons, which is involved in synaptic plasticity.
-------------------	---

Immunogen	Polyclonal antibody is produced by immunizing animals with a synthetic peptide of Synaptopodin.
------------------	---

Purification	Polyclonal antibody was purified by immunogen affinity chromatography.
---------------------	--

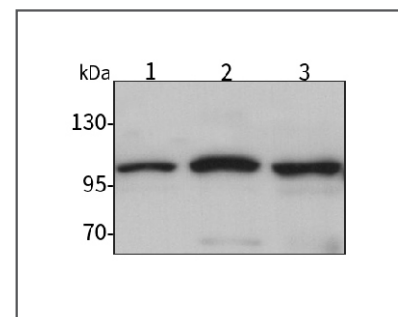
Anti-Synaptopodin Rabbit pAb



WL04397

For Research Use Only. Not For Use In Diagnostic Procedures

Product Images



Western blot-Anti-Synaptopodin pAb

Lane 1: Human MDA-MB-231 cell lysate

Lane 2: Human A549 cell lysate

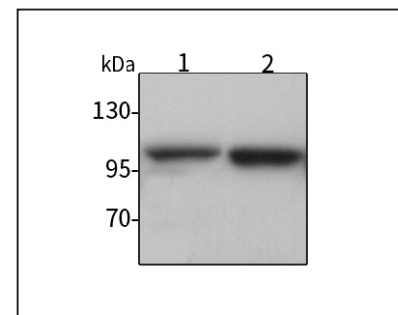
Lane 3: Human HUVEC cell lysate

All lanes: Anti-Synaptopodin at 1:1000 dilution

Lysates/proteins at 20-50 μg per lane.

Predicted band size: 99 kDa

Observed band size: 99 kDa



Western blot-Anti-Synaptopodin pAb

Lane 1: Mouse brain tissue lysate

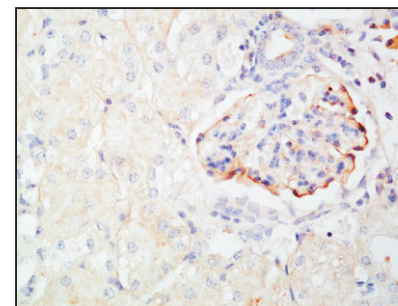
Lane 2: Mouse liver tissue lysate

All lanes: Anti-Synaptopodin at 1:1000 dilution

Lysates/proteins at 20-50 μg per lane.

Predicted band size: 99 kDa

Observed band size: 99 kDa



Immunohistochemistry-Anti-Synaptopodin pAb

Immunohistochemical analysis of paraffin-embedded mouse kidney using anti-Synaptopodin Rabbit Antibody at 1:200 dilution.

Perform heat mediated antigen retrieval with Tris-EDTA buffer pH 9.0