

## Anti-KDM5A Rabbit pAb



WL05053

For Research Use Only. Not For Use In Diagnostic Procedures

## Product Information

<b>Product name</b>	Anti-KDM5A Rabbit pAb
<b>Source</b>	Rabbit
<b>Species reactivity</b>	Human
<b>Tested applications</b>	Western blot 1:1000-1:2000
	<i>*Suggested working dilutions are given as a guide only. It is recommended that the user titrates the product for use in their own experiment using appropriate negative and positive controls.</i>
<b>Pack size</b>	50/100/200/500/1000μl
<b>Storage</b>	Store at -20°C. <b>Avoid freeze/thaw cycles.</b>
<b>Storage buffer</b>	Supplied in 20 mM phosphate (pH 7.5), 150 mM NaCl, 100 μg/ml BSA, 50% glycerol and less than 0.02% sodium azide

## General Information

<b>Background</b>	KDM5A, also named as JARID1A, RBBP2 and RBP2, belongs to the JARID1 histone demethylase family. KDM5A is a Histone demethylase that specifically demethylates 'Lys-4' of histone H3, thereby playing a central role in histone code.
-------------------	--

<b>Immunogen</b>	Polyclonal antibody is produced by immunizing animals with a synthetic peptide of KDM5A.
------------------	--

<b>Purification</b>	Polyclonal antibody was purified by Protein A affinity chromatography.
---------------------	--

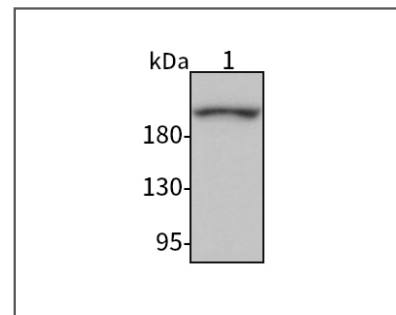
## Anti-KDM5A Rabbit pAb



WL05053

For Research Use Only. Not For Use In Diagnostic Procedures

## Product Images



## Western blot-Anti-KDM5A pAb

Lane 1: Human Hela cell lysate 40μg  
 All lanes: Anti-KDM5A at 1:1000 dilution  
 Lysates/proteins at 20-50 μg per lane  
 Predicted band size: 192 kDa  
 Observed band size: 192 kDa