

## Anti-CXCL13 Rabbit pAb



WL01521

For Research Use Only. Not For Use In Diagnostic Procedures

## Product Information

<b>Product name</b>	Anti-CXCL13 Rabbit pAb	
<b>Source</b>	Rabbit	
<b>Species reactivity</b>	Human, Mouse, Rat	
<b>Tested applications</b>	WB	1:500-1:1000
	IHC	1:200
	IF	1:200

**Cellular localization** Secreted

**Pack size** 50/100/200/500/1000μl

**Storage** Store at -20°C. **Avoid freeze/thaw cycles.**

**Storage buffer** Supplied in 20 mM phosphate (pH 7.5), 150 mM NaCl, 100 μg/ml BSA, 50% glycerol and less than 0.02% sodium azide

## General Information

**Background** BLR1 (Burkitt lymphoma receptor-1), also called CXCR5, is highly expressed on Burkitt lymphoma cells and B lymphocytes. It may therefore function in the homing of B lymphocytes to follicles.

**Immunogen** Polyclonal antibody is produced by immunizing animals with a synthetic peptide of CXCL13.

**Purification** Polyclonal antibody was purified by immunogen affinity chromatography.

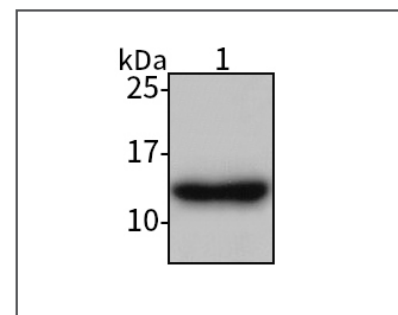
## Anti-CXCL13 Rabbit pAb



WL01521

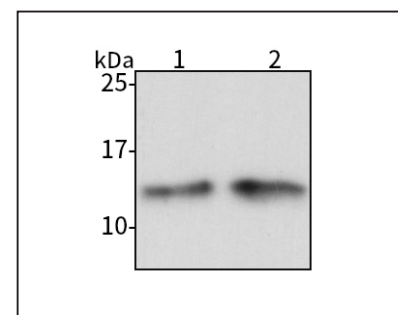
For Research Use Only. Not For Use In Diagnostic Procedures

## Product Images



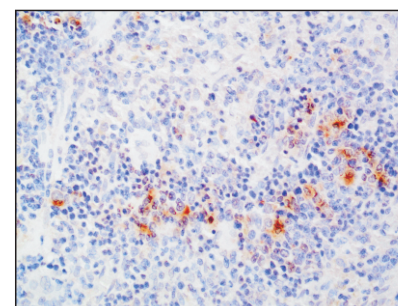
## Western blot-Anti-CXCL13 pAb

Lane 1: Human HepG2 cell lysate  
**All lanes:** Anti-CXCL13 at 1:1000 dilution  
 Lysates/proteins at 20-50 μg per lane.  
 Predicted band size: 13 kDa  
 Observed band size: 13 kDa



## Western blot-Anti-CXCL13 pAb

Lane 1: Mouse liver tissue lysate  
 Lane 2: Rat spleen tissue lysate  
**All lanes:** Anti-CXCL13 at 1:1000 dilution  
 Lysates/proteins at 20-50 μg per lane.  
 Predicted band size: 13 kDa  
 Observed band size: 13 kDa



## Immunohistochemistry-Anti-CXCL13 pAb

Immunohistochemical analysis of paraffin-embedded rat spleen using anti-CXCL13 Rabbit Antibody at 1:200 dilution.  
 Perform heat mediated antigen retrieval with Tris-EDTA buffer pH 9.0

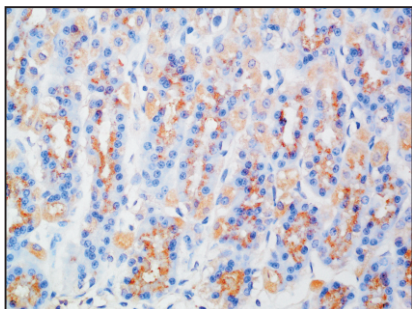
## Anti-CXCL13 Rabbit pAb



WL01521

For Research Use Only. Not For Use In Diagnostic Procedures

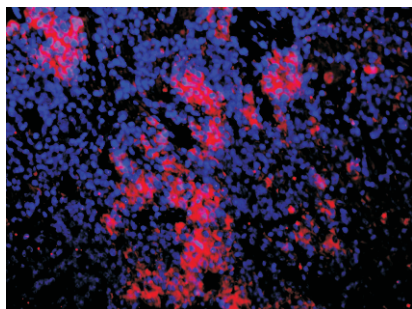
### Product Information



#### Immunohistochemistry-Anti-CXCL13 pAb

Immunohistochemical analysis of paraffin-embedded rat stomach using anti-CXCL13 Rabbit Antibody at 1:200 dilution.

Perform heat mediated antigen retrieval with Tris-EDTA buffer pH 9.0



#### Immunofluorescence-Anti-CXCL13 pAb

Immunofluorescence analysis of paraffin-embedded rat spleen using anti-CXCL13 Rabbit Antibody at 1:200 dilution.

Perform heat mediated antigen retrieval with Tris-EDTA buffer pH 9.0