

Anti-granzyme B Rabbit pAb



WL03262

For Research Use Only. Not For Use In Diagnostic Procedures

Product Information

Product name	Anti-granzyme B Rabbit pAb		
Source	Rabbit		
Species reactivity	Human, Mouse, Rat		
Tested applications	WB	1:1000-1:2000	
	IHC	1:500	
	IF	1:500	
Cellular localization	Cytoplasmic granule		
Pack size	50/100/200/500/1000µl		
Storage	Store at -20°C. Avoid freeze/thaw cycles.		
Storage buffer	Supplied in 20 mM phosphate (pH 7.5), 150 mM NaCl, 100 µg/ml		
	BSA, 50% glycerol and less than 0.02% sodium azide		

General Information

Background	Granzymes are a family of serine proteases expressed by cytotoxic T lymphocytes (CTL) and natural killer (NK) cells and are key components of immune responses to pathogens and transformed cells. In activated CTLs, granzyme A and granzyme B are processed and activated by cathepsin C, and they then function to induce apoptosis by two distinct pathways. Granzyme B proteolytically cleaves and activates members of the caspase family of cysteine proteases, including caspase-3, caspase-6, caspase-7 and caspase-9.
Immunogen	Polyclonal antibody is produced by immunizing animals with a synthetic peptide of granzyme B.
Purification	Polyclonal antibody was purified by Protein A affinity chromatography.

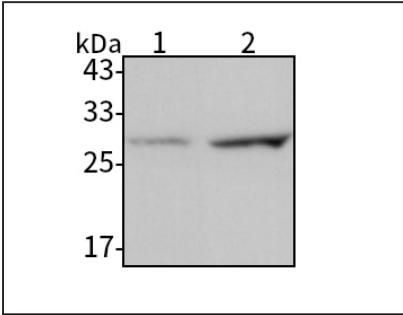
Anti-granzyme B Rabbit pAb



WL03262

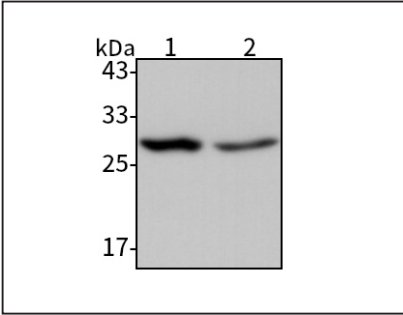
For Research Use Only. Not For Use In Diagnostic Procedures

Product Images



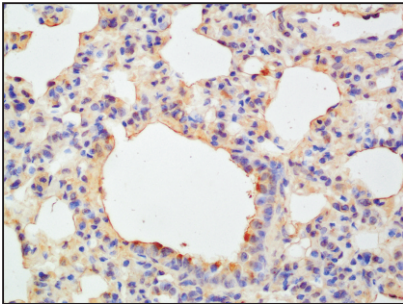
Western blot-Anti-granzyme B pAb

Lane 1: Human CAL-78 cell lysate
Lane 2: Human AsPC-1 cell lysate
All lanes: Anti-granzyme B at 1:1000 dilution
Lysates/proteins at 20-50 µg per lane.
Predicted band size: 28 kDa
Observed band size: 28 kDa



Western blot-Anti-granzyme B pAb

Lane 1: Mouse spleen tissue lysate
Lane 2: Rat skin tissue lysate
All lanes: Anti-granzyme B at 1:1000 dilution
Lysates/proteins at 20-50 µg per lane.
Predicted band size: 28 kDa
Observed band size: 28 kDa



Immunohistochemistry-Anti-granzyme B pAb

Immunohistochemical analysis of paraffin-embedded rat lung using anti-granzyme B Rabbit Antibody at 1:500 dilution.
Perform heat mediated antigen retrieval with Tris-EDTA buffer pH 9.0

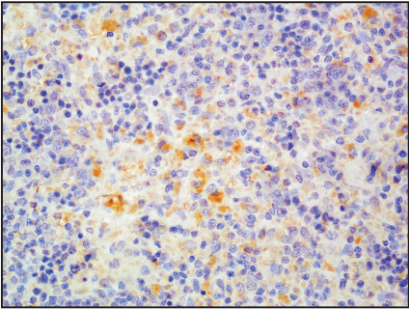
Anti-granzyme B Rabbit pAb



WL03262

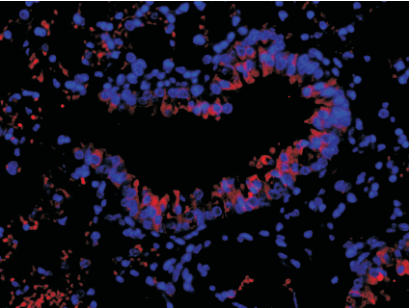
For Research Use Only. Not For Use In Diagnostic Procedures

Product Information



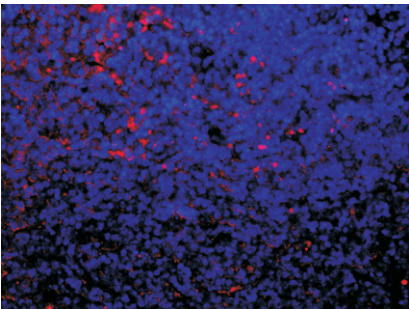
Immunohistochemistry-Anti-granzyme B pAb

Immunohistochemical analysis of paraffin-embedded rat spleen using anti-granzyme B Rabbit Antibody at 1:500 dilution.
Perform heat mediated antigen retrieval with Tris-EDTA buffer pH 9.0



Immunofluorescence-Anti-granzyme B pAb

Immunofluorescence analysis of paraffin-embedded mouse lung using anti-granzyme B Rabbit Antibody at 1:500 dilution.
Perform heat mediated antigen retrieval with Tris-EDTA buffer pH 9.0



Immunofluorescence-Anti-granzyme B pAb

Immunofluorescence analysis of paraffin-embedded mouse spleen using anti-granzyme B Rabbit Antibody at 1:500 dilution.
Perform heat mediated antigen retrieval with Tris-EDTA buffer pH 9.0

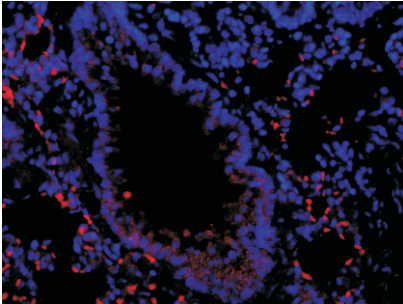
Anti-granzyme B Rabbit pAb



WL03262

For Research Use Only. Not For Use In Diagnostic Procedures

Product Images



Immunofluorescence-Anti-granzyme B pAb

Immunofluorescence analysis of paraffin-embedded rat lung using anti-granzyme B Rabbit Antibody at 1:500 dilution.
Perform heat mediated antigen retrieval with Tris-EDTA buffer pH 9.0