

Anti-E2F3 Rabbit pAb



WL05155

For Research Use Only. Not For Use In Diagnostic Procedures

Product Information

Product name	Anti-E2F3 Rabbit pAb		
Source	Rabbit		
Species reactivity	Human, Mouse, Rat		
Tested applications	WB	1:1000-1:2000	
Pack size	50/100/200/500/1000µl		
Storage	Store at -20°C. Avoid freeze/thaw cycles.		
Storage buffer	Supplied in 20 mM phosphate (pH 7.5), 150 mM NaCl, 100 µg/ml BSA, 50% glycerol and less than 0.02% sodium azide		

General Information

Background	E2F3 member of a small family of transcription factors that function through binding of DP interaction partner proteins, recognizes a specific sequence motif in DNA and interacts directly with the retinoblastoma protein (pRB) to regulate the expression of genes involved in the cell cycle.
------------	---

Immunogen	Polyclonal antibody is produced by immunizing animals with a synthetic peptide of E2F3.
-----------	---

Purification	Polyclonal antibody was purified by ProteinA affinity chromatography.
--------------	---

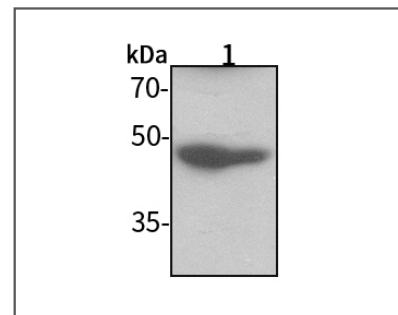
Anti-E2F3 Rabbit pAb



WL05155

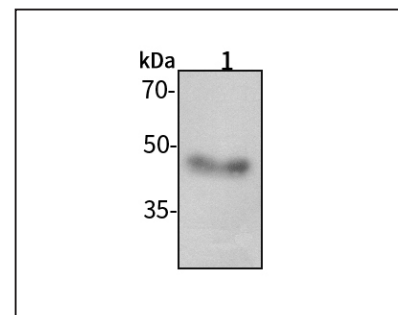
For Research Use Only. Not For Use In Diagnostic Procedures

Product Images



Western blot-Anti-E2F3 pAb

Lane 1: Human A549 cell lysate
All lanes: Anti-E2F3 at 1:1000 dilution
Lysates/proteins at 20-50 µg per lane.
Predicted band size: 49 kDa
Observed band size: 49-60 kDa



Western blot-Anti-E2F3 pAb

Lane 1: Rat lung tissue lysate
All lanes: Anti-E2F3 at 1:1000 dilution
Lysates/proteins at 20-50 µg per lane.
Predicted band size: 49 kDa
Observed band size: 49-60 kDa