

Anti-KLK8 Rabbit pAb



WLH4683

For Research Use Only. Not For Use In Diagnostic Procedures

Product Information

Product name	Anti-KLK8 Rabbit pAb	
Source	Rabbit	
Species reactivity	Human, Mouse, Rat	
Tested applications	IHC	1:100-1:400
	IF	1:50-1:200
Cellular localization	Secreted. Cytoplasm	
Pack size	50/100/200/500/1000μl	
Storage	Store at -20°C. Avoid freeze/thaw cycles.	
Storage buffer	Supplied in 20 mM phosphate (pH 7.5), 150 mM NaCl, 100 μg/ml	
	BSA, 50% glycerol and less than 0.02% sodium azide	

General Information

Background	KLK8(Kallikrein-8) It is a new member of the human kallikrein family, which is predicted to be secreted and expected to be present in biological fluids. The protein is detectable in ovarian cancer tissue extracts, serum, and ascites fluid, indicating that it may serve as a new ovarian cancer marker.
Immunogen	Polyclonal antibody is produced by immunizing animals with a synthetic peptide of KLK8.
Purification	Polyclonal antibody was purified by immunogen affinity chromatography.

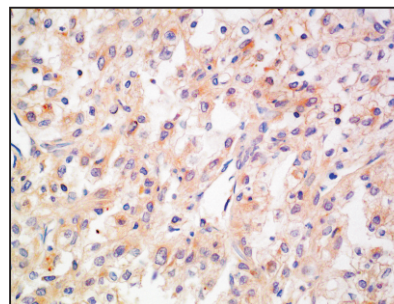
Anti-KLK8 Rabbit pAb



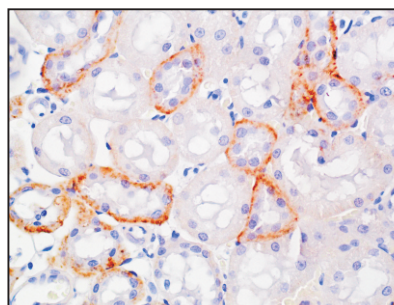
WLH4683

For Research Use Only. Not For Use In Diagnostic Procedures

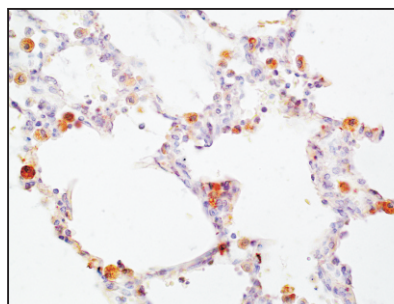
Product Images

**Immunohistochemistry-Anti-KLK8 pAb**

Immunohistochemical analysis of paraffin-embedded human stomach cancer using anti-KLK8 Rabbit Antibody at 1:200 dilution.
Perform heat mediated antigen retrieval with Tris-EDTA buffer pH 9.0

**Immunohistochemistry-Anti-KLK8 pAb**

Immunohistochemical analysis of paraffin-embedded rat kidney using anti-KLK8 Rabbit Antibody at 1:200 dilution.
Perform heat mediated antigen retrieval with Tris-EDTA buffer pH 9.0

**Immunohistochemistry-Anti-KLK8 pAb**

Immunohistochemical analysis of paraffin-embedded rat lung using anti-KLK8 Rabbit Antibody at 1:200 dilution.
Perform heat mediated antigen retrieval with Tris-EDTA buffer pH 9.0

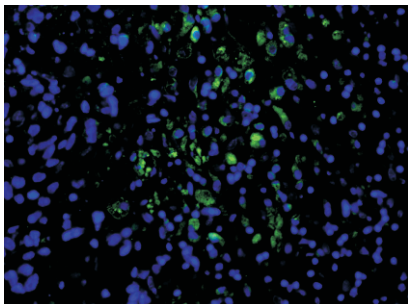
Anti-KLK8 Rabbit pAb



WLH4683

For Research Use Only. Not For Use In Diagnostic Procedures

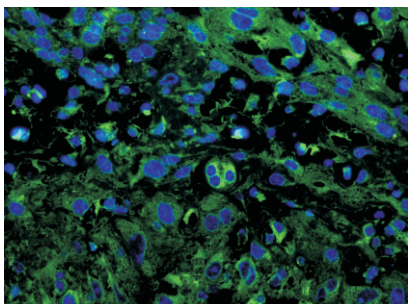
Product Information



Immunofluorescence-Anti-KLK8 pAb

Immunofluorescence analysis of paraffin-embedded human lung cancer using anti-KLK8 Rabbit Antibody at 1:100 dilution.

Perform heat mediated antigen retrieval with Tris-EDTA buffer pH 9.0



Immunofluorescence-Anti-KLK8 pAb

Immunofluorescence analysis of paraffin-embedded rat placenta using anti-KLK8 Rabbit Antibody at 1:100 dilution.

Perform heat mediated antigen retrieval with Tris-EDTA buffer pH 9.0