

Anti-IFN $\gamma$  Rabbit pAb

WL02440

For Research Use Only. Not For Use In Diagnostic Procedures

## Product Information

<b>Product name</b>	Anti-IFN $\gamma$ Rabbit pAb	
<b>Source</b>	Rabbit	
<b>Species reactivity</b>	Human, Mouse, Rat	
<b>Tested applications</b>	WB	1:1000-1:2000
	IHC	1:100-1:200
	IF	1:500
<b>Cellular localization</b>	Secreted	
<b>Pack size</b>	50/100/200/500/1000 $\mu$ l	
<b>Storage</b>	Store at -20°C. <b>Avoid freeze/thaw cycles.</b>	
<b>Storage buffer</b>	Supplied in 20 mM phosphate (pH 7.5), 150 mM NaCl, 100 $\mu$ g/ml	
	BSA, 50% glycerol and less than 0.02% sodium azide	

## General Information

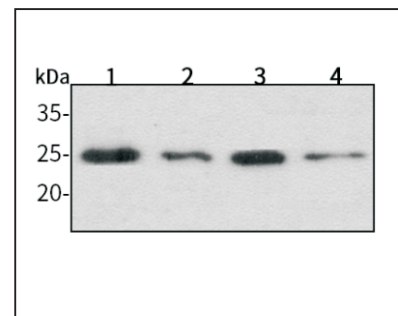
<b>Background</b>	Interferon (IFN)- $\gamma$ is an antiviral and antiparasitic agent produced by CD4 <sup>+</sup> /CD8 <sup>+</sup> lymphocytes and natural killer cells that undergo activation by antigens, mitogens or alloantigens. IFN- $\gamma$ plays key roles in both the innate and adaptive immune response. The active form of IFN- $\gamma$ is a homodimer with each subunit containing six helices. The critical role of IFN- $\gamma$ in amplification of immune surveillance and function is supported by increased susceptibility to pathogen infection by IFN- $\gamma$ or IFN $\gamma$ knockout mice and in humans with inactivating mutations in IFNGR1 or IFNGR2. IFN- $\gamma$ also appears to have a role in atherosclerosis.
<b>Immunogen</b>	Polyclonal antibody is produced by immunizing animals with a synthetic peptide of IFN $\gamma$ .
<b>Purification</b>	Polyclonal antibody was purified by Protein A affinity chromatography.

Anti-IFN $\gamma$  Rabbit pAb

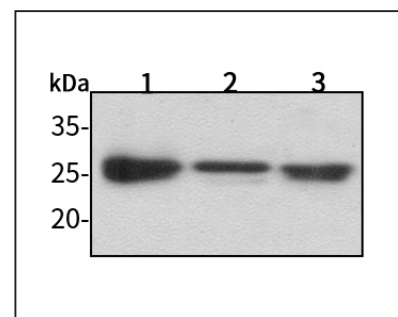
WL02440

For Research Use Only. Not For Use In Diagnostic Procedures

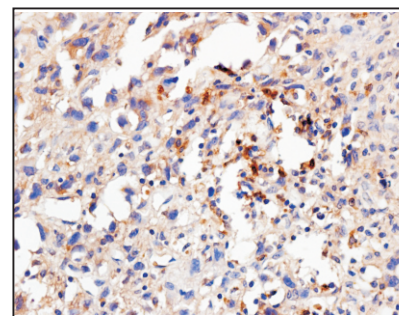
## Product Images

Western blot-Anti-IFN $\gamma$  pAb

Lane 1: Human HepG2 cell lysate  
 Lane 2: Human BGC-823 cell lysate  
 Lane 3: Human Hela cell lysate  
 Lane 4: Human HEK-293 cell lysate  
 All lanes: Anti-IFN $\gamma$  at 1:1000 dilution  
 Lysates/proteins at 20-50  $\mu$ g per lane.  
 Predicted band size: 19 kDa  
 Observed band size: 19/22 kDa

Western blot-Anti-IFN $\gamma$  pAb

Lane 1: Mouse kidney tissue lysate  
 Lane 2: Mouse heart tissue lysate  
 Lane 3: Rat liver tissue lysate  
 All lanes: Anti-IFN $\gamma$  at 1:1000 dilution  
 Lysates/proteins at 20-50  $\mu$ g per lane.  
 Predicted band size: 19 kDa  
 Observed band size: 19/22 kDa

Immunohistochemistry-Anti-IFN $\gamma$  pAb

Immunohistochemical analysis of paraffin-embedded human osteosarcoma using anti-IFN $\gamma$  Rabbit Antibody at 1:200 dilution. Perform heat mediated antigen retrieval with Tris-EDTA buffer pH 9.0

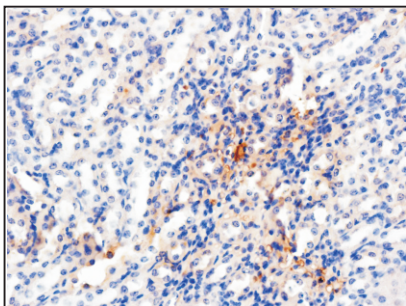
## Anti-IFN $\gamma$ Rabbit pAb



WL02440

For Research Use Only. Not For Use In Diagnostic Procedures

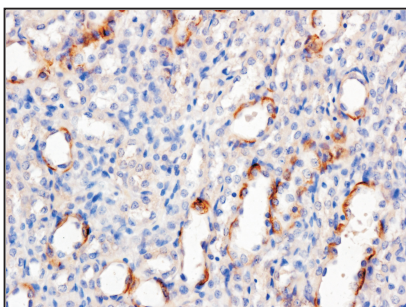
### Product Information



#### Immunohistochemistry-Anti-IFN $\gamma$ pAb

Immunohistochemical analysis of paraffin-embedded mouse kidney (LPS treated) using anti-IFN $\gamma$  Rabbit Antibody at 1:100 dilution.

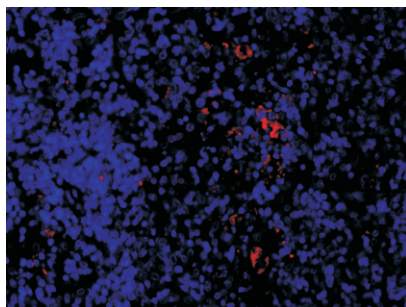
Perform heat mediated antigen retrieval with Tris-EDTA buffer pH 9.0



#### Immunohistochemistry-Anti-IFN $\gamma$ pAb

Immunohistochemical analysis of paraffin-embedded rat kidney (LPS treated) using anti-IFN $\gamma$  Rabbit Antibody at 1:100 dilution.

Perform heat mediated antigen retrieval with Tris-EDTA buffer pH 9.0



#### Immunofluorescence-Anti-IFN $\gamma$ pAb

Immunofluorescence analysis of paraffin-embedded rat spleen using anti-IFN $\gamma$  Rabbit Antibody at 1:500 dilution.

Perform heat mediated antigen retrieval with Tris-EDTA buffer pH 9.0