

Anti-E2F1 Rabbit pAb



WL02394

For Research Use Only. Not For Use In Diagnostic Procedures

Product Information

Product name	Anti-E2F1 Rabbit pAb	
Source	Rabbit	
Species reactivity	Human, Mouse, Rat	
Tested applications	WB	1:500-1:1000
	IHC	1:100-1:400
Cellular localization	Nucleus	
Pack size	50/100/200/500/1000μl	
Storage	Store at -20°C. Avoid freeze/thaw cycles.	
Storage buffer	Supplied in 20 mM phosphate (pH 7.5), 150 mM NaCl, 100 μg/ml	
	BSA, 50% glycerol and less than 0.02% sodium azide	

General Information

Background	The protein encoded by this gene is a member of the E2F family of transcription factors. The E2F family plays a crucial role in the control of cell cycle and action of tumor suppressor proteins and is also a target of the transforming proteins of small DNA tumor viruses. The E2F proteins contain several evolutionally conserved domains found in most members of the family. E2F-1 to -3 bind pRb, and E2F-4 and -5 bind p107 or p130, and these interactions are under cell cycle control. E2F-1 has oncogenic properties in vivo and in vitro. E2F-1 can induce apoptosis through p53-dependent and -independent mechanisms. E2F-1 is stress-responsive, and is regulated by a PI3-kinase-like kinase family such as the ATM/ATR kinases.
Immunogen	Polyclonal antibody is produced by immunizing animals with a synthetic peptide of E2F1.
Purification	Polyclonal antibody was purified by immunogen affinity chromatography.

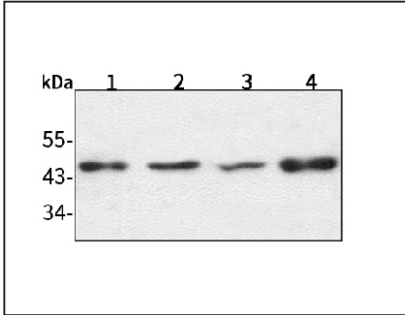
Anti-E2F1 Rabbit pAb



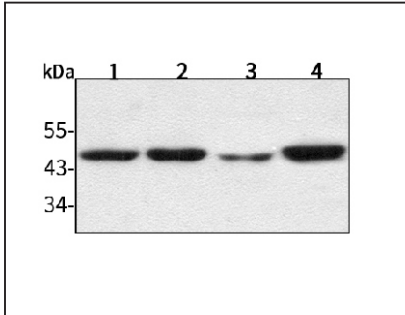
WL02394

For Research Use Only. Not For Use In Diagnostic Procedures

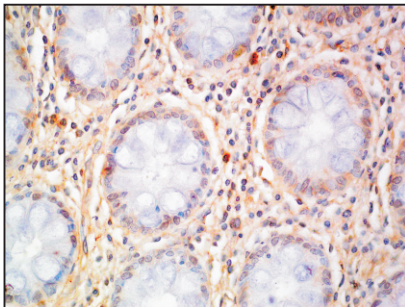
Product Images



**Western blot-Anti-E2F1 pAb**  
Lane 1: Human HepG2 cell lysate  
Lane 2: Human Hela cell lysate  
Lane 3: Human BGC-823 cell lysate  
Lane 4: Human SGC-7901 cell lysate  
All lanes: Anti-E2F1 at 1:1000 dilution  
Lysates/proteins at 20-50 μg per lane.  
Predicted band size: 47 kDa  
Observed band size: 47-70 kDa



**Western blot-Anti-E2F1 pAb**  
Lane 1: Mouse kidney tissue lysate  
Lane 2: Mouse heart tissue lysate  
Lane 3: Rat liver tissue lysate  
Lane 4: Rat brain tissue lysate  
All lanes: Anti-E2F1 at 1:1000 dilution  
Lysates/proteins at 20-50 μg per lane.  
Predicted band size: 47 kDa  
Observed band size: 47-70 kDa



**Immunohistochemistry-Anti-E2F1 pAb**  
Immunohistochemical analysis of paraffin-embedded human colon cancer using anti-E2F1 Rabbit Antibody at 1:200 dilution.  
Perform heat mediated antigen retrieval with Tris-EDTA buffer pH 9.0

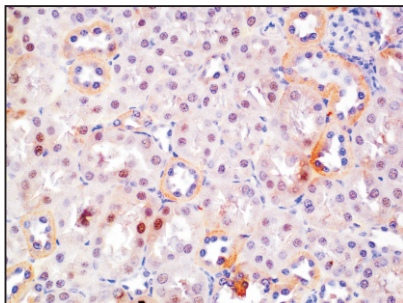
## Anti-E2F1 Rabbit pAb



WL02394

For Research Use Only. Not For Use In Diagnostic Procedures

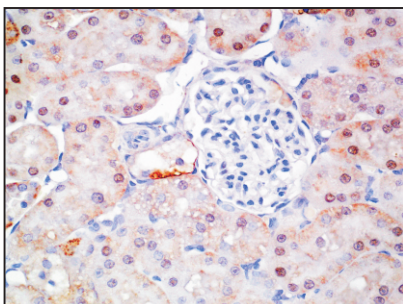
## Product Information



### Immunohistochemistry-Anti-E2F1 pAb

Immunohistochemical analysis of paraffin-embedded mouse kidney using anti-E2F1 Rabbit Antibody at 1:200 dilution.

Perform heat mediated antigen retrieval with Tris-EDTA buffer pH 9.0



### Immunohistochemistry-Anti-E2F1 pAb

Immunohistochemical analysis of paraffin-embedded rat kidney using anti-E2F1 Rabbit Antibody at 1:200 dilution.

Perform heat mediated antigen retrieval with Tris-EDTA buffer pH 9.0