

Anti-RIPK2 Rabbit pAb



WL04530

For Research Use Only. Not For Use In Diagnostic Procedures

Product Information

Product name	Anti-RIPK2 Rabbit pAb	
Source	Rabbit	
Species reactivity	Human, Mouse, Rat	
Tested applications	WB	1:1000-1:2000
	IHC, IF	1:100-1:400
Cellular localization	Cytoplasm.	
Pack size	50/100/200/500/1000μl	
Storage	Store at -20°C. Avoid freeze/thaw cycles.	
Storage buffer	Supplied in 20 mM phosphate (pH 7.5), 150 mM NaCl, 100 μg/ml	
	BSA, 50% glycerol and less than 0.02% sodium azide	

General Information

Background	RIPK2 is a member of the receptor-interacting protein (RIP) family of serine/ threonine protein kinases. Association of RIP2 with the tumor necrosis factor receptor (TNFR) causes activation of NF-κB and induction of apoptosis. RIPK2 functions as a key signaling protein in host defense responses induced by activation of the cytosolic pattern recognition receptors (PRR) NOD1 and NOD2.
Immunogen	Polyclonal antibody is produced by immunizing animals with a synthetic
Purification	Polyclonal antibody was purified by Protein A affinity chromatography.

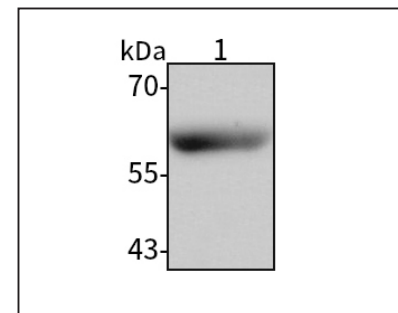
Anti-RIPK2 Rabbit pAb



WL04530

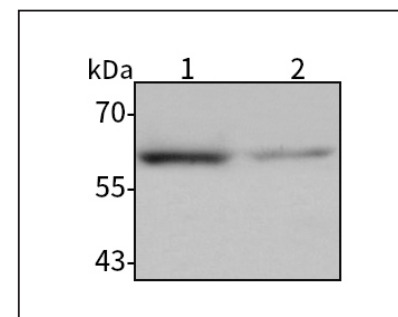
For Research Use Only. Not For Use In Diagnostic Procedures

Product Images



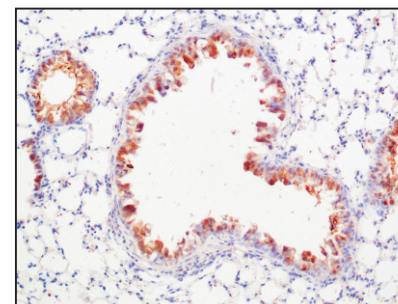
Western blot-Anti-RIPK2 pAb

Lane 1: Human Raji cell lysate 30μg
All lanes: Anti-RIPK2 at 1:1000 dilution
 Lysates/proteins at 20-50 μg per lane
 Predicted band size: 61 kDa
 Observed band size: 61 kDa



Western blot-Anti-RIPK2 pAb

Lane 1: Mouse heart tissue lysate 30μg
 Lane 2: Rat liver tissue lysate 30μg
All lanes: Anti-RIPK2 at 1:1000 dilution
 Lysates/proteins at 20-50 μg per lane
 Predicted band size: 61 kDa
 Observed band size: 61 kDa



Immunohistochemistry-Anti-RIPK2 pAb

Immunohistochemical analysis of paraffin-embedded mouse lung using anti-RIPK2 Rabbit Antibody at 1:200 dilution. Perform heat mediated antigen retrieval with Tris-EDTA buffer pH 9.0

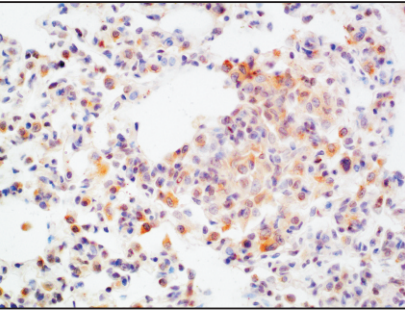
Anti-RIPK2 Rabbit pAb



WL04530

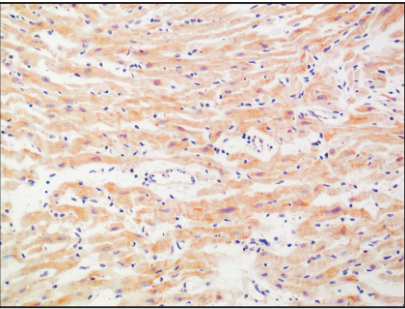
For Research Use Only. Not For Use In Diagnostic Procedures

Product Information



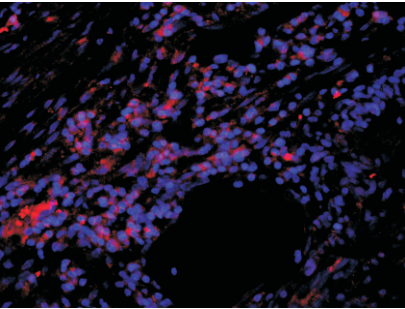
Immunohistochemistry-Anti-RIPK2 pAb

Immunohistochemical analysis of paraffin-embedded rat lung using anti-RIPK2 Rabbit Antibody at 1:200 dilution. Perform heat mediated antigen retrieval with Tris-EDTA buffer pH 9.0



Immunohistochemistry-Anti-RIPK2 pAb

Immunohistochemical analysis of paraffin-embedded rat heart using anti-RIPK2 Rabbit Antibody at 1:200 dilution. Perform heat mediated antigen retrieval with Tris-EDTA buffer pH 9.0



Immunofluorescence-Anti-RIPK2 pAb

Immunofluorescence analysis of paraffin-embedded human colon cancer using anti-RIPK2 Rabbit Antibody at 1:200 dilution. Perform heat mediated antigen retrieval with Tris-EDTA buffer pH 9.0

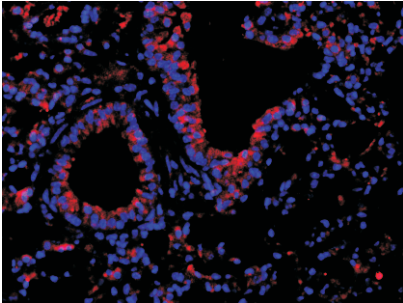
Anti-RIPK2 Rabbit pAb



WL04530

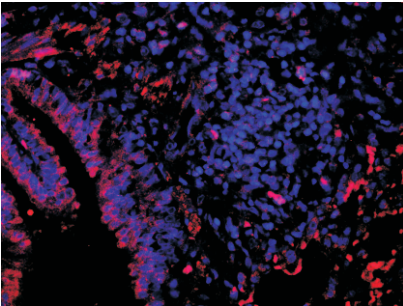
For Research Use Only. Not For Use In Diagnostic Procedures

Product Information



Immunofluorescence-Anti-RIPK2 pAb

Immunofluorescence analysis of paraffin-embedded mouse lung using anti-RIPK2 Rabbit Antibody at 1:200 dilution. Perform heat mediated antigen retrieval with Tris-EDTA buffer pH 9.0



Immunofluorescence-Anti-RIPK2 pAb

Immunofluorescence analysis of paraffin-embedded rat lung using anti-RIPK2 Rabbit Antibody at 1:200 dilution. Perform heat mediated antigen retrieval with Tris-EDTA buffer pH 9.0