

Anti-LTBP1 Rabbit pAb



WL05014

For Research Use Only. Not For Use In Diagnostic Procedures

Product Information

Product name	Anti-LTBP1 Rabbit pAb	
Source	Rabbit	
Species reactivity	Human, Mouse, Rat	
Tested applications	WB	1:1000-1:2000
	IHC	1:500
	IF	1:500
Cellular localization	Secreted	
Pack size	50/100/200/500/1000μl	
Storage	Store at -20°C. Avoid freeze/thaw cycles.	
Storage buffer	Supplied in 20 mM phosphate (pH 7.5), 150 mM NaCl, 100 μg/ml	
	BSA, 50% glycerol and less than 0.02% sodium azide	

General Information

Background	Latent TGFβ binding protein 1 (LTBP1) is a large extracellular protein which belongs to the family of latent TGF-beta binding proteins (LTBPs). LTBP1 is essential for TGF-beta folding, secretion, matrix localization and activation. LTBP1 has also been demonstrated to interact with a number of insoluble extracellular matrix components, such as fibrillin.
Immunogen	Polyclonal antibody is produced by immunizing animals with a synthetic peptide of LTBP1.
Purification	Polyclonal antibody was purified by Protein A affinity chromatography.

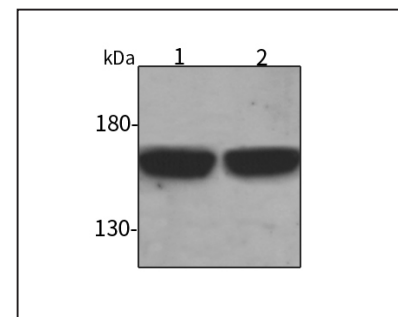
Anti-LTBP1 Rabbit pAb



WL05014

For Research Use Only. Not For Use In Diagnostic Procedures

Product Images



Western blot-Anti-LTBP1 pAb

Lane 1: Mouse heart tissue lysate

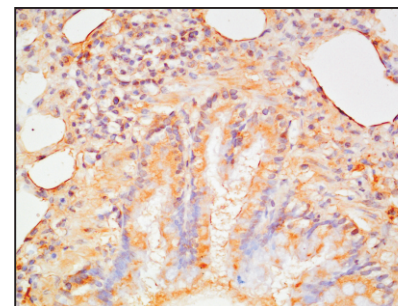
Lane 2: Rat pancreas tissue lysate

All lanes: Anti-LTBP1 at 1:1000 dilution

Lysates/proteins at 20-50 μg per lane.

Predicted band size: 187 kDa

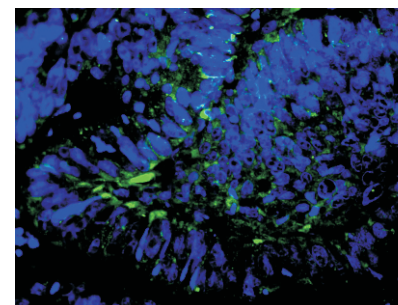
Observed band size: 150-187 kDa



Immunohistochemistry-Anti-LTBP1 pAb

Immunohistochemical analysis of paraffin-embedded rat lung using anti-LTBP1 Rabbit Antibody at 1:500 dilution.

Perform heat mediated antigen retrieval with Tris-EDTA buffer pH 9.0



Immunofluorescence-Anti-LTBP1 pAb

Immunofluorescence analysis of paraffin-embedded human colon cancer using anti-LTBP1 Rabbit Antibody at 1:500 dilution.

Perform heat mediated antigen retrieval with Tris-EDTA buffer pH 9.0

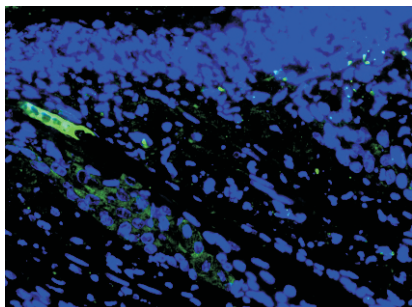
Anti-LTBP1 Rabbit pAb



WL05014

For Research Use Only. Not For Use In Diagnostic Procedures

Product Information



Immunofluorescence-Anti-LTBP1 pAb

Immunofluorescence analysis of paraffin-embedded mouse skin using anti-LTBP1 Rabbit Antibody at 1:500 dilution.

Perform heat mediated antigen retrieval with Tris-EDTA buffer pH 9.0