

Anti-Frizzled 2 Rabbit pAb



WL04710

For Research Use Only. Not For Use In Diagnostic Procedures

Product Information

Product name	Anti-Frizzled 2 Rabbit pAb		
Source	Rabbit		
Species reactivity	Human		
Tested applications	WB	1:500-1:1000	
Pack size	50/100/200/500/1000μl		
Storage	Store at -20°C. Avoid freeze/thaw cycles.		
Storage buffer	Supplied in 20 mM phosphate (pH 7.5), 150 mM NaCl, 100 μg/ml BSA, 50% glycerol and less than 0.02% sodium azide		

General Information

Background

Frizzled 2 (FZD2), also known as FzE2, belongs to the G protein coupled receptor Fz/Smo family. FZD2 is an important receptor in the Wnt pathway, highly expressed in malignant tumors, and helps regulate various tumor behaviors. Most curly receptors are coupled to the β - catenin regulated signaling pathway, leading to activation of disordered proteins, inhibition of GSK-3 kinase, nuclear accumulation of β - catenin, and activation of Wnt target genes. Frizzled 2 acts as a receptor for Clostridium difficile toxin TcdB in microbiologically infected colonic epithelium.

Immunogen

Polyclonal antibody is produced by immunizing animals with a synthetic peptide of Frizzled 2.

Purification

Polyclonal antibody was purified by immunogen affinity chromatography.

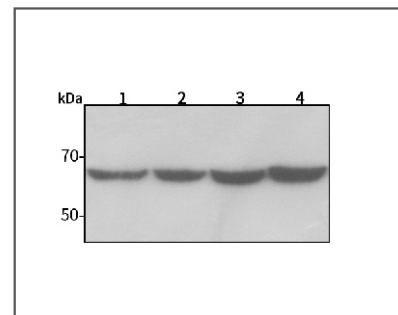
Anti-Frizzled 2 Rabbit pAb



WL04710

For Research Use Only. Not For Use In Diagnostic Procedures

Product Images



Western blot-Anti-Frizzled 2 pAb

Lane 1: Human HeLa cell lysate

Lane 2: Human MCF-7 cell lysate

Lane 3: Human HEK-293 cell lysate

Lane 4: Human A549 cell lysate

All lanes: Anti-Frizzled 2 at 1:1000 dilution

Lysates/proteins at 20-50 μg per lane.

Predicted band size: 64 kDa

Observed band size: 64-70 kDa