

Anti-LKB1 Rabbit pAb



WL05428

For Research Use Only. Not For Use In Diagnostic Procedures

Product Information

Product name	Anti-LKB1 Rabbit pAb		
Source	Rabbit		
Species reactivity	Human, Mouse, Rat		
Tested applications	WB	1:500-1:1000	
	IHC	1:50-1:200	
Cellular localization	Cytoplasm, Membrane, Mitochondrion, Nucleus.		
Pack size	50/100/200/500/1000μl		
Storage	Store at -20°C. Avoid freeze/thaw cycles.		
Storage buffer	Supplied in 20 mM phosphate (pH 7.5), 150 mM NaCl, 100 μg/ml		
	BSA, 50% glycerol and less than 0.02% sodium azide		

General Information

Background

STK11 (serine/threonine-protein kinase 11) is also named as LKB1, PJS, and belongs to the protein kinase superfamily. It controls the activity of AMP-activated protein kinase (AMPK) family members, thereby playing a role in various processes such as cell metabolism, cell polarity, apoptosis and DNA damage response. The tumour suppressor protein LKB1 is a serine/threonine kinase that has been causally linked to Peutz-Jeghers syndrome (PJS).

Immunogen

Polyclonal antibody is produced by immunizing animals with a synthetic peptide of LKB1.

Purification

Polyclonal antibody was purified by immunogen affinity chromatography.

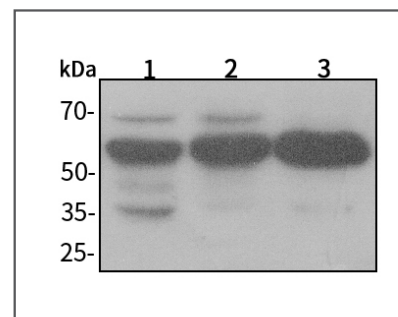
Anti-LKB1 Rabbit pAb



WL05428

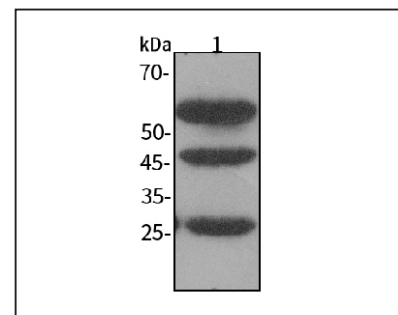
For Research Use Only. Not For Use In Diagnostic Procedures

Product Images



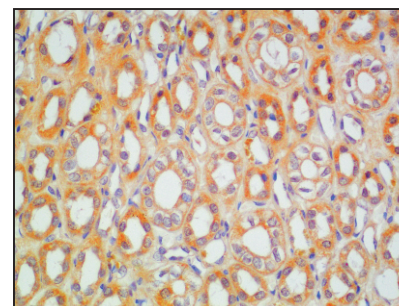
Western blot-Anti-LKB1 pAb

Lane 1: Human HUVEC cell lysate
 Lane 2: Human SW480 cell lysate
 Lane 3: Human A549 cell lysate
 All lanes: Anti-LKB1 at 1:1000 dilution
 Lysates/proteins at 20-50 μg per lane.
 Predicted band size: 49 kDa
 Observed band size: 55 kDa



Western blot-Anti-LKB1 pAb

Lane 1: Rat kidney tissue lysate
 All lanes: Anti-LKB1 at 1:1000 dilution
 Lysates/proteins at 20-50 μg per lane.
 Predicted band size: 49 kDa
 Observed band size: 55 kDa



Immunohistochemistry-Anti-LKB1 pAb

Immunohistochemical analysis of paraffin-embedded human kidney using anti-LKB1 Rabbit Antibody at 1:100 dilution.
 Perform heat mediated antigen retrieval with Tris-EDTA buffer pH 9.0

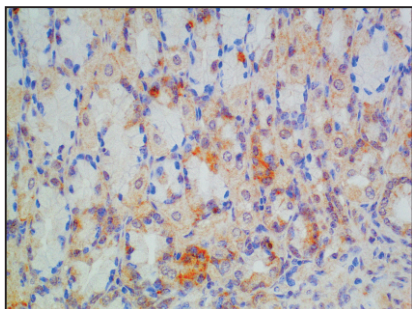
Anti-LKB1 Rabbit pAb



WL05428

For Research Use Only. Not For Use In Diagnostic Procedures

Product Information



Immunohistochemistry-Anti-LKB1 pAb

Immunohistochemical analysis of paraffin-embedded mouse stomach using anti-LKB1 Rabbit Antibody at 1:100 dilution.

Perform heat mediated antigen retrieval with Tris-EDTA buffer pH 9.0