

Product Datasheet

Anti-RASA1 Rabbit pAb



WL04632

For Research Use Only. Not For Use In Diagnostic Procedures

Product Information

Product name	Anti-RASA1 Rabbit pAb	
Source	Rabbit	
Species reactivity	Human	
Tested applications	Western blot	1:500-1:1000
	<i>*Suggested working dilutions are given as a guide only. It is recommended that the user titrates the product for use in their own experiment using appropriate negative and positive controls.</i>	
Pack size	50/100/200/500/1000μl	
Storage	Store at -20°C. Avoid freeze/thaw cycles.	
Storage buffer	Supplied in 20 mM phosphate (pH 7.5), 150 mM NaCl, 100 μg/ml BSA, 50% glycerol and less than 0.02% sodium azide	

General Information

Background	RASA1 protein is located in the cytoplasm and is part of the GAP1 family of GTPase-activating proteins. Acting as a suppressor of RAS function, the protein enhances the weak intrinsic GTPase activity of RAS proteins resulting in the inactive GDP-bound form of RAS, thereby allowing control of cellular proliferation and differentiation.
Immunogen	Polyclonal antibody is produced by immunizing animals with a synthetic peptide of RASA1.
Purification	Polyclonal antibody was purified by immunogen affinity chromatography.

Product Datasheet

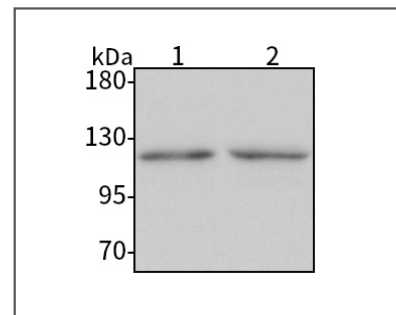
Anti-RASA1 Rabbit pAb



WL04632

For Research Use Only. Not For Use In Diagnostic Procedures

Product Images



Western blot-Anti-RASA1 pAb

Lane 1: Human Hela cell lysate

Lane 2: Human Calu-3 cell lysate

All lanes: Anti-RASA1 at 1:1000 dilution

Lysates/proteins at 20-50 μg per lane.

Predicted band size: 116 kDa

Observed band size: 120 kDa