

## Anti-IRE1 Rabbit pAb



WL05219

For Research Use Only. Not For Use In Diagnostic Procedures

## Product Information

Product name	Anti-IRE1 Rabbit pAb		
Source	Rabbit		
Species reactivity	Human, Mouse, Rat		
Tested applications	WB	1:1000-1:2000	
	IF	1:100-1:500	
Cellular localization	Endoplasmic reticulum membrane, Single-pass type I membrane protein.		
Pack size	50/100/200/500/1000μl		
Storage	Store at -20°C. Avoid freeze/thaw cycles.		
Storage buffer	Supplied in 20 mM phosphate (pH 7.5), 150 mM NaCl, 100 μg/ml		
	BSA, 50% glycerol and less than 0.02% sodium azide		

## General Information

<b>Background</b>	The accumulation of unfolded proteins within the endoplasmic reticulum (ER) of yeast and mammalian cells activates the unfolded protein response (UPR) pathway and leads to the transcription of ER-specific genes involved in protein folding. One of the players in UPR, IRE1, was first identified in <i>Saccharomyces cerevisiae</i> as a transmembrane serine/threonine kinase. Recently, IRE1α was shown to mediate the rapid degradation of certain mRNAs based on the ER-localization and primary sequences of their encoded proteins, suggesting a novel mechanism in UPR.
<b>Immunogen</b>	Polyclonal antibody is produced by immunizing animals with a synthetic peptide of IRE1.
<b>Purification</b>	Polyclonal antibody was purified by Protein A affinity chromatography.

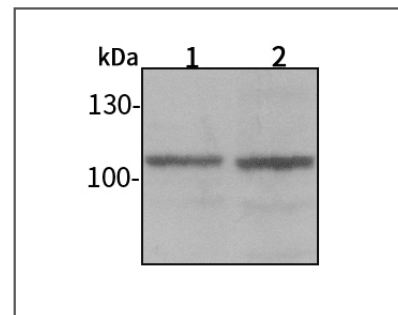
## Anti-IRE1 Rabbit pAb



WL05219

For Research Use Only. Not For Use In Diagnostic Procedures

## Product Images



Western blot-Anti-IRE1 pAb

Lane 1: Human MCF-7 cell lysate

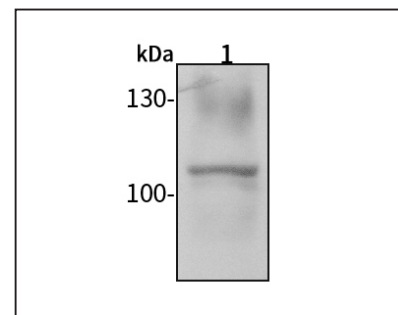
Lane 2: Human HEK-293 cell lysate

All lanes: Anti-IRE1 at 1:1000 dilution

Lysates/proteins at 20-50 μg per lane.

Predicted band size: 110 kDa

Observed band size: 110 kDa



Western blot-Anti-IRE1 pAb

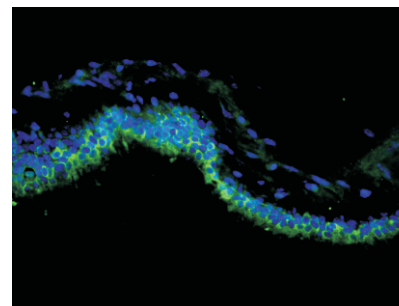
Lane 1: Mouse liver tissue lysate

All lanes: Anti-IRE1 at 1:1000 dilution

Lysates/proteins at 20-50 μg per lane.

Predicted band size: 110 kDa

Observed band size: 110 kDa



Immunofluorescence-Anti-IRE1 pAb

Immunofluorescence analysis of paraffin-embedded mouse gallbladder using anti-IRE1 Rabbit Antibody at 1:200 dilution.

Perform heat mediated antigen retrieval with Tris-EDTA buffer pH 9.0

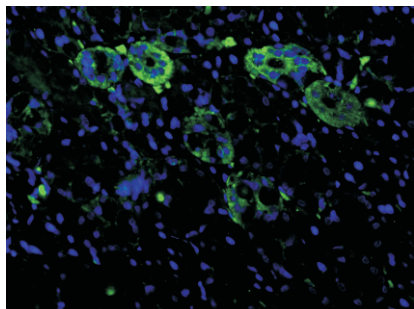
## Anti-IRE1 Rabbit pAb



WL05219

For Research Use Only. Not For Use In Diagnostic Procedures

## Product Information



### Immunofluorescence-Anti-IRE1 pAb

Immunofluorescence analysis of paraffin-embedded rat salivary gland using anti-IRE1 Rabbit Antibody at 1:200 dilution.

Perform heat mediated antigen retrieval with Tris-EDTA buffer pH 9.0