

Anti- SOX15 Rabbit pAb



WLA0492

For Research Use Only. Not For Use In Diagnostic Procedures

Product Information

Product name	Anti- SOX15 Rabbit pAb		
Source	Rabbit		
Species reactivity	Human, Mouse, Rat		
Tested applications	WB	1:1000-1:2000	
	IHC	1:100-1:500	
Cellular localization	Nucleus.		
Pack size	50/100/200/500/1000µl		
Storage	Store at -20°C. Avoid freeze/thaw cycles.		
Storage buffer	Supplied in 20 mM phosphate (pH 7.5), 150 mM NaCl, 100 µg/ml		
	BSA, 50% glycerol and less than 0.02% sodium azide		

General Information

Background	Sox15, Also known as Sox12 or Sox20. Sox15 is widely expressed in fetal and adult tissues, with the highest levels found in the fetal spinal cord, adult brain, and testes. Sox15 is a candidate tumor inhibitor in pancreatic cancer and has a potential role in Wnt/ β - catenin signal transduction. Sox15 is necessary for skeletal muscle regeneration and is regulated in embryonic mouse testes. Sox15 may be a transcription factor that binds to DNA on the 5'-acaatg-3' shared sequence, or it may bind to the FOXK1 promoter and recruit FHL3, leading to transcriptional activation of FOXK1 and resulting in muscle cell proliferation.
Immunogen	Polyclonal antibody is produced by immunizing animals with a synthetic peptide of SOX15.
Purification	Polyclonal antibody was purified by Protein A affinity chromatography.

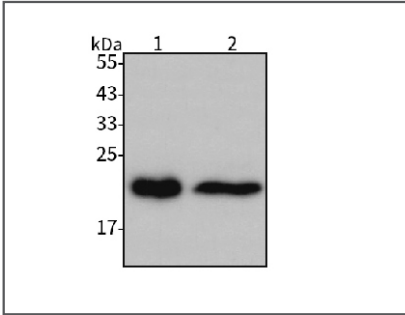
Anti- SOX15 Rabbit pAb



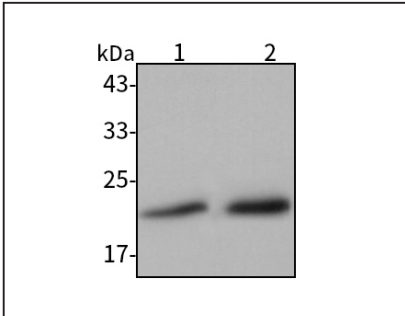
WLA0492

For Research Use Only. Not For Use In Diagnostic Procedures

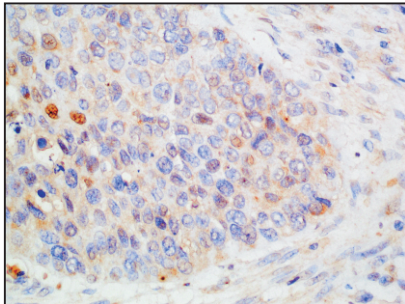
Product Images



Western blot-Anti- SOX15 pAb
Lane 1: Human CAL-27 cell lasate
Lane 2: Human BxPC-3 cell lasate
All lanes: Anti- SOX15 at 1:1000 dilution
Lysates/proteins at 20-50 µg per lane.
Predicted band size: 25 kDa
Observed band size: 20 kDa



Western blot-Anti- SOX15 pAb
Lane 1: Mouse testis tissue lysate
Lane 2: Rat testis tissue lysate
All lanes: Anti- SOX15 at 1:1000 dilution
Lysates/proteins at 20-50 µg per lane.
Predicted band size: 25 kDa
Observed band size: 20 kDa



Immunohistochemistry-Anti- SOX15 pAb
Immunohistochemical analysis of paraffin-embedded human esophageal cancer using anti- SOX15 Rabbit Antibody at 1:100 dilution.
Perform heat mediated antigen retrieval with Tris-EDTA buffer pH 9.0

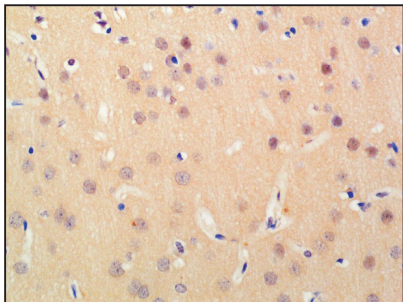


Anti- SOX15 Rabbit pAb

WLA0492

For Research Use Only. Not For Use In Diagnostic Procedures

Product Information



Immunohistochemistry-Anti- SOX15 pAb

Immunohistochemical analysis of paraffin-embedded rat brain using anti-SOX15 Rabbit Antibody at 1:100 dilution.

Perform heat mediated antigen retrieval with Tris-EDTA buffer pH 9.0