

Anti-Met Rabbit pAb



WL01758

For Research Use Only. Not For Use In Diagnostic Procedures

Product Information

Product name	Anti-Met Rabbit pAb	
Source	Rabbit	
Species reactivity	Human, Mouse, Rat	
Tested applications	WB	1:500-1:1000
	IHC	1:200
	IF	1:200
Cellular localization	Membrane	
Pack size	50/100/200/500/1000μl	
Storage	Store at -20°C. Avoid freeze/thaw cycles.	
Storage buffer	Supplied in 20 mM phosphate (pH 7.5), 150 mM NaCl, 100 μg/ml	
	BSA, 50% glycerol and less than 0.02% sodium azide	

General Information

Background	The Met oncogene was originally isolated from a chemical carcinogen-treated human osteogenic sarcoma cell line by transfection analysis in NIH/3T3 cells. The Met proto-oncogene product was identified as a transmembrane receptor-like protein with tyrosine kinase activity that is expressed in many tissues. A high proportion of spontaneous NIH/3T3 transformants overexpress Met and by transfection analysis the Met proto-oncogene has been shown to exhibit transforming activity. Tyrosine phosphorylation of apparently normal Met protein has also been observed in certain human gastric carcinoma cell lines. The Met gene product has been identified as the cell-surface receptor for hepatocyte growth factor, a plasminogen-like protein thought to be a humoral mediator of liver regeneration.
Immunogen	Polyclonal antibody is produced by immunizing animals with a synthetic peptide of Met.
Purification	Polyclonal antibody was purified by immunogen affinity chromatography.

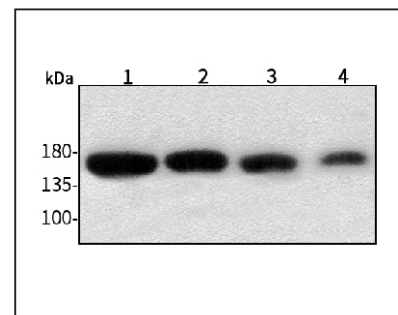
Anti-Met Rabbit pAb



WL01758

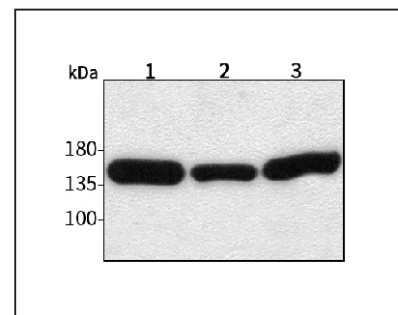
For Research Use Only. Not For Use In Diagnostic Procedures

Product Images



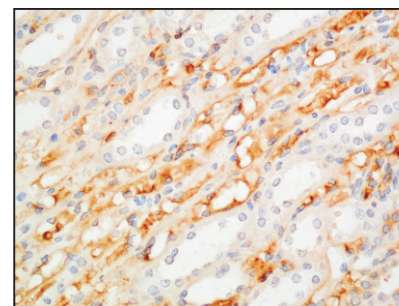
Western blot-Anti-Met pAb

Lane 1: Human SW480 cell lysate
 Lane 2: Human MGC-803 cell lysate
 Lane 3: Human SGC-7901 cell lysate
 Lane 4: Human MCF-7 cell lysate
 All lanes: Anti-Met at 1:1000 dilution
 Lysates/proteins at 20-50 μg per lane.
 Predicted band size: 155 kDa
 Observed band size: 140/170 kDa



Western blot-Anti-Met pAb

Lane 1: Mouse stomach tissue lysate
 Lane 2: Mouse kidney tissue lysate
 Lane 3: Rat lung tissue lysate
 All lanes: Anti-Met at 1:1000 dilution
 Lysates/proteins at 20-50 μg per lane.
 Predicted band size: 155 kDa
 Observed band size: 140/170 kDa



Immunohistochemistry-Anti-Met pAb

Immunohistochemical analysis of paraffin-embedded rat kidney using anti-Met Rabbit Antibody at 1:200 dilution.
 Perform heat mediated antigen retrieval with Tris-EDTA buffer pH 9.0

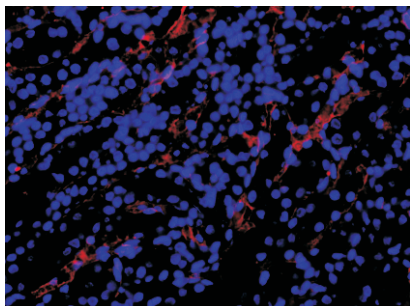
Anti-Met Rabbit pAb



WL01758

For Research Use Only. Not For Use In Diagnostic Procedures

Product Information



Immunofluorescence-Anti-Met pAb

Immunofluorescence analysis of paraffin-embedded rat kidney using anti-Met Rabbit Antibody at 1:200 dilution.

Perform heat mediated antigen retrieval with Tris-EDTA buffer pH 9.0