

## Anti-FosB Rabbit pAb



WL03471

For Research Use Only. Not For Use In Diagnostic Procedures

## Product Information

<b>Product name</b>	Anti-FosB Rabbit pAb	
<b>Source</b>	Rabbit	
<b>Species reactivity</b>	Human, Mouse, Rat	
<b>Tested applications</b>	WB	1:500-1:1000
	IHC	1:150
<b>Cellular localization</b>	Nucleus	
<b>Pack size</b>	50/100/200/500/1000µl	
<b>Storage</b>	Store at -20°C. <b>Avoid freeze/thaw cycles.</b>	
<b>Storage buffer</b>	Supplied in 20 mM phosphate (pH 7.5), 150 mM NaCl, 100 µg/ml	
	BSA, 50% glycerol and less than 0.02% sodium azide	

## General Information

**Background**

The Fos family of nuclear oncogenes includes c-Fos, FosB, Fos-related antigen 1 (FRA1), and Fos-related antigen 2 (FRA2). While most Fos proteins exist as a single isoform, the FosB protein exists as two isoforms: full-length FosB and a shorter form, FosB2 (Delta FosB), which lacks the carboxy-terminal 101 amino acids. The expression of Fos proteins is rapidly and transiently induced by a variety of extracellular stimuli including growth factors, cytokines, neurotransmitters, polypeptide hormones, and stress. Fos proteins dimerize with Jun proteins (c-Jun, JunB, and JunD) to form Activator Protein-1 (AP-1), a transcription factor that binds to TRE/AP-1 elements and activates transcription. The Fos proteins have been implicated as regulators of cell proliferation, differentiation, and transformation.

**Immunogen**

Polyclonal antibody is produced by immunizing animals with a synthetic peptide of FosB.

**Purification**

Polyclonal antibody was purified by immunogen affinity chromatography.

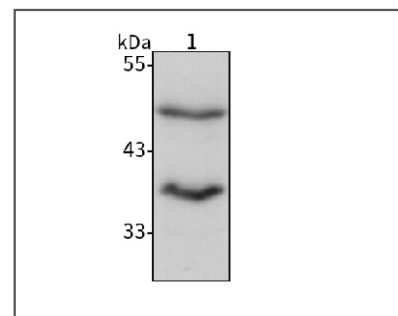
## Anti-FosB Rabbit pAb



WL03471

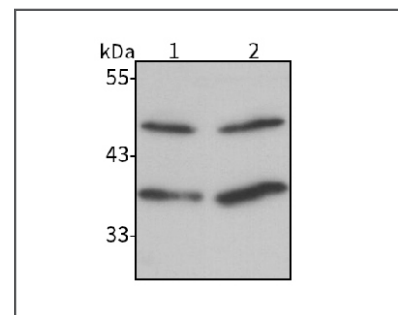
For Research Use Only. Not For Use In Diagnostic Procedures

## Product Images



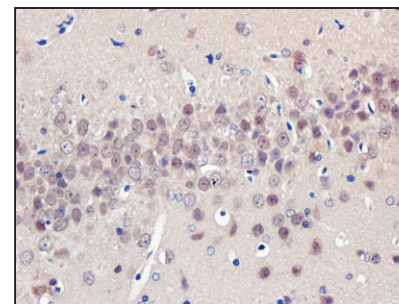
## Western blot-Anti-FosB pAb

**Lane 1:** Human breast cancer tissue lysate  
**All lanes:** Anti-FosB at 1:1000 dilution  
 Lysates/proteins at 20-50 µg per lane.  
 Predicted band size: 36 kDa  
 Observed band size: 38/48 kDa



## Western blot-Anti-FosB pAb

**Lane 1:** Mouse spleen tissue lysate  
**Lane 2:** Rat spleen tissue lysate  
**All lanes:** Anti-FosB at 1:1000 dilution  
 Lysates/proteins at 20-50 µg per lane.  
 Predicted band size: 36 kDa  
 Observed band size: 38/48 kDa



## Immunohistochemistry-Anti-FosB pAb

Immunohistochemical analysis of paraffin-embedded rat brain using anti-FosB Rabbit Antibody at 1:150 dilution.  
 Perform heat mediated antigen retrieval with Tris-EDTA buffer pH 9.0