

Anti-FAS Rabbit pAb



WL03376

For Research Use Only. Not For Use In Diagnostic Procedures

Product Information

Product name	Anti-FAS Rabbit pAb	
Source	Rabbit	
Species reactivity	Human, Mouse, Rat	
Tested applications	WB	1:500-1:1000
	IHC	1:100-1:400
	IF	1:200
Cellular localization	Secreted and Cell membrane	
Pack size	50/100/200/500/1000µl	
Storage	Store at -20°C. Avoid freeze/thaw cycles.	
Storage buffer	Supplied in 20 mM phosphate (pH 7.5), 150 mM NaCl, 100 µg/ml	
	BSA, 50% glycerol and less than 0.02% sodium azide	

General Information

Background	The human FAS protein is a cell surface glycoprotein that belongs to a family of receptors that includes CD40, nerve growth factor receptors and tumor necrosis factor receptors. The FAS antigen is expressed on a broad range of lymphoid cell lines, certain of which undergo apoptosis in response to treatment with antibody to FAS. These findings strongly imply that targeted cell death is potentially mediated by the intercellular interactions of FAS with its ligand or effectors, and that FAS may be critically involved in CTL-mediated cytotoxicity.
Immunogen	Polyclonal antibody is produced by immunizing animals with a synthetic peptide of FAS.
Purification	Polyclonal antibody was purified by immunogen affinity chromatography.

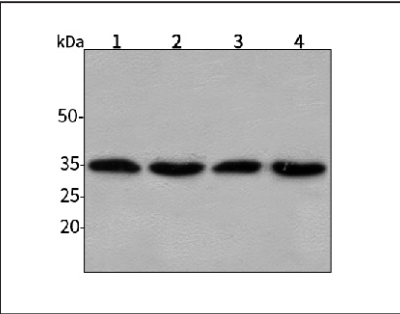
Anti-FAS Rabbit pAb



WL03376

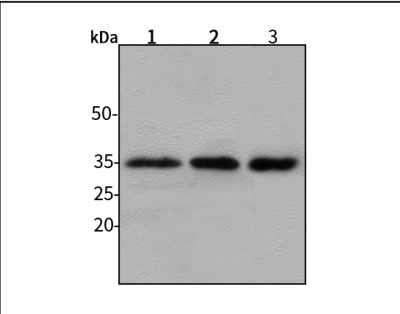
For Research Use Only. Not For Use In Diagnostic Procedures

Product Images



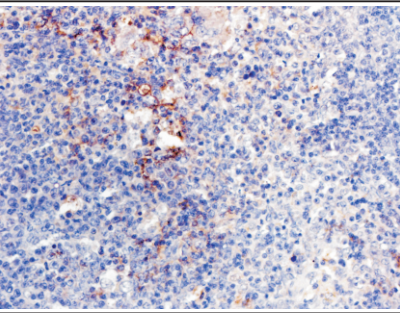
Western blot-Anti-FAS pAb

Lane 1: Human HepG2 cell lysate
Lane 2: Human Hela cell lysate
Lane 3: Human BGC-823 cell lysate
Lane 4: Human MGC-803 cell lysate
All lanes: Anti-FAS at 1:1000 dilution
Lysates/proteins at 20-50 µg per lane.
Predicted band size: 35 kDa
Observed band size: 35-50 kDa



Western blot-Anti-FAS pAb

Lane 1: Mouse kidney tissue lysate
Lane 2: Mouse heart tissue lysate
Lane 3: Rat heart tissue lysate
All lanes: Anti-FAS at 1:1000 dilution
Lysates/proteins at 20-50 µg per lane.
Predicted band size: 35 kDa
Observed band size: 35-50 kDa



Immunohistochemistry-Anti-FAS pAb

Immunohistochemical analysis of paraffin-embedded rat spleen t using anti-FAS Rabbit Antibody at 1:150 dilution.
Perform heat mediated antigen retrieval with Tris-EDTA buffer pH 9.0

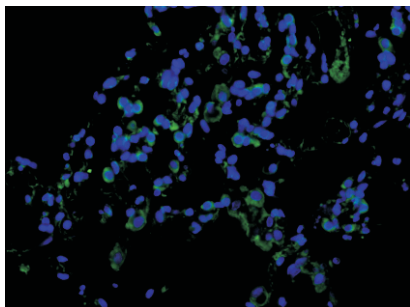
Anti-FAS Rabbit pAb



WL03376

For Research Use Only. Not For Use In Diagnostic Procedures

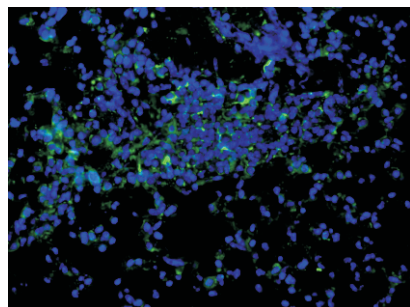
Product Information



Immunofluorescence-Anti-FAS pAb

Immunofluorescence analysis of paraffin-embedded human lung cancer using anti-FAS Rabbit Antibody at 1:200 dilution.

Perform heat mediated antigen retrieval with Tris-EDTA buffer pH 9.0



Immunofluorescence-Anti-FAS pAb

Immunofluorescence analysis of paraffin-embedded mouse lung using anti-FAS Rabbit Antibody at 1:200 dilution.

Perform heat mediated antigen retrieval with Tris-EDTA buffer pH 9.0