

Anti-Cyclin B1 Rabbit pAb



WL02310

For Research Use Only. Not For Use In Diagnostic Procedures

Product Information

Product name	Anti-Cyclin B1 Rabbit pAb	
Source	Rabbit	
Species reactivity	Human	
Tested applications	WB	1:1000-1:2000
	IHC	1:50-1:100
	IF	1:500
Cellular localization	Cytoplasm. Nucleus	
Pack size	50/100/200/500/1000µl	
Storage	Store at -20°C. Avoid freeze/thaw cycles.	
Storage buffer	Supplied in 20 mM phosphate (pH 7.5), 150 mM NaCl, 100 µg/ml	
	BSA, 50% glycerol and less than 0.02% sodium azide	

General Information

Background	Cyclins are a family of proteins that activate specific cyclin-dependent kinases required for progression through the cell cycle. The entry of all eukaryotic cells into mitosis is regulated by activation of cdc2/cdk1 at the G2/M transition. Five cyclin B1 phosphorylation sites (Ser116, 126, 128, 133, and 147) are located in the cytoplasmic retention signal (CRS) domain and are thought to regulate the translocation of cyclin B1 to the nucleus at the G2/M checkpoint, promoting nuclear accumulation and initiation of mitosis. Research studies have shown that cyclin B1 is overexpressed in breast, prostate, and non-small cell lung cancers.
Immunogen	Polyclonal antibody is produced by immunizing animals with a synthetic peptide of Cyclin B1.
Purification	Polyclonal antibody was purified by Protein A affinity chromatography.

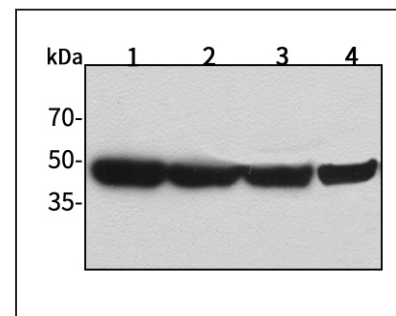
Anti-Cyclin B1 Rabbit pAb



WL02310

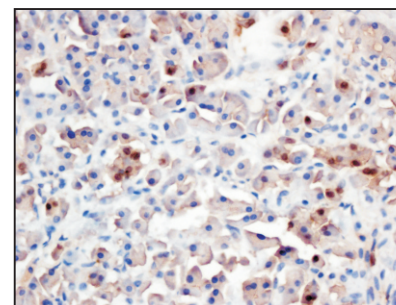
For Research Use Only. Not For Use In Diagnostic Procedures

Product Images



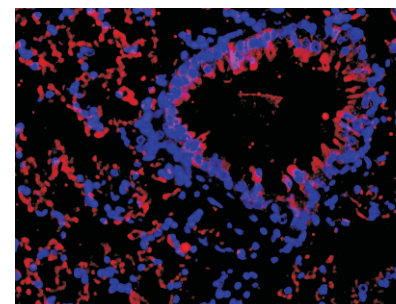
Western blot-Anti--Cyclin B1 pAb

Lane 1: Human HepG2 cell lysate
 Lane 2: Human Hela cell lysate
 Lane 3: Human BGC-823 cell lysate
 Lane 4: Human MGC-803 cell lysate
 All lanes: Anti--Cyclin B1 at 1:1000 dilution
 Lysates/proteins at 20-50 µg per lane.
 Predicted band size: 48 kDa
 Observed band size: 48-60 kDa



Immunohistochemistry-Anti-Cyclin B1 pAb

Immunohistochemical analysis of paraffin-embedded Human pancreatic cancer using anti-Cyclin B1 Rabbit Antibody at 1:100 dilution.
 Perform heat mediated antigen retrieval with Tris-EDTA buffer pH 9.0



Immunofluorescence-Anti-Cyclin B1 pAb

Immunofluorescence analysis of paraffin-embedded rat kidney using anti-Cyclin B1 Rabbit Antibody at 1:500 dilution.
 Perform heat mediated antigen retrieval with Tris-EDTA buffer pH 9.0