

Anti-CSF-1-R Rabbit pAb



WL01272

For Research Use Only. Not For Use In Diagnostic Procedures

Product Information

Product name	Anti-CSF-1-R Rabbit pAb
Source	Rabbit
Species reactivity	Human, Mouse, Rat
Tested applications	WB 1:500-1:1000
Pack size	50/100/200/500/1000μl
Storage	Store at -20°C. Avoid freeze/thaw cycles.
Storage buffer	Supplied in 20 mM phosphate (pH 7.5), 150 mM NaCl, 100 μg/ml BSA, 50% glycerol and less than 0.02% sodium azide

General Information

Background	The encoded protein is a tyrosine kinase transmembrane receptor and member of the CSF1/PDGF receptor family of tyrosine-protein kinases. Mutations in this gene have been associated with a predisposition to myeloid malignancy. The first intron of this gene contains a transcriptionally inactive ribosomal protein L7 processed pseudogene oriented in the opposite direction. Alternative splicing results in multiple transcript variants.
Immunogen	Polyclonal antibody is produced by immunizing animals with a synthetic peptide of CSF-1-R.
Purification	Polyclonal antibody was purified by immunogen affinity chromatography.

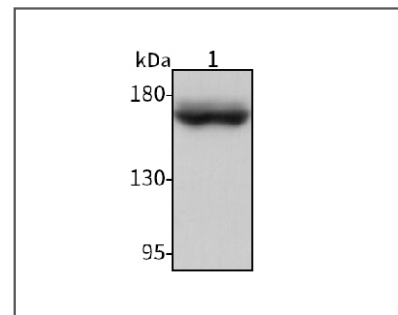
Anti-CSF-1-R Rabbit pAb



WL01272

For Research Use Only. Not For Use In Diagnostic Procedures

Product Images



Western blot-Anti-CSF-1-R pAb

Lane 1: Human THP-1 cell lysate
All lanes: Anti-CSF-1-R at 1:1000 dilution
Lysates/proteins at 20-50 μg per lane.
Predicted band size: 108 kDa
Observed band size: 140-200 kDa