

Anti-PRSS8 Rabbit pAb



WL05211

For Research Use Only. Not For Use In Diagnostic Procedures

Product Information

Product name	Anti-PRSS8 Rabbit pAb		
Source	Rabbit		
Species reactivity	Human, Mouse, Rat		
Tested applications	WB	1:1000-1:2000	
	IHC, IF	1:100-1:500	
Molecular Wt.	Predicted band size: 36 kDa		
	Observed band size: 36 kDa		
Cellular localization	Cell membrane and Secreted.		
Pack size	50/100/200/500/1000μl		
Storage	Store at -20°C. Avoid freeze/thaw cycles.		
Storage buffer	Supplied in 20 mM phosphate (pH 7.5), 150 mM NaCl, 100 μg/ml BSA, 50% glycerol and less than 0.02% sodium azide		

General Information

Background	PRSS8 is a member of the peptidase S1 or chymotrypsin family of serine proteases. It is a heterodimer of two chains, light and heavy, which are held by a disulfide bond. This protease exhibits trypsin-like substrate specificity, cleaving protein substrates at the carboxyl terminus of lysine or arginine residues.
Immunogen	Polyclonal antibody is produced by immunizing animals with a synthetic peptide of PRSS8.
Purification	Polyclonal antibody was purified by Protein A affinity chromatography.

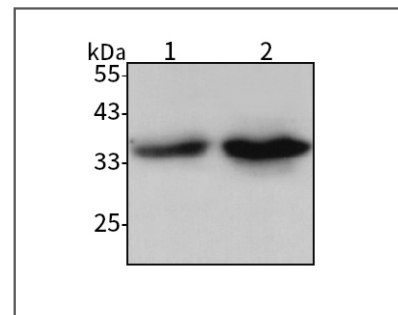
Anti-PRSS8 Rabbit pAb



WL05211

For Research Use Only. Not For Use In Diagnostic Procedures

Product Images



Western blot-Anti-PRSS8 pAb

Lane 1: Human CAL-27 cell lysate 20μg

Lane 2: Human MCF-7 cell lysate 20μg

Separation gel: 11% polyacrylamide

Electrophoresis: 100V, 4°C, 3h

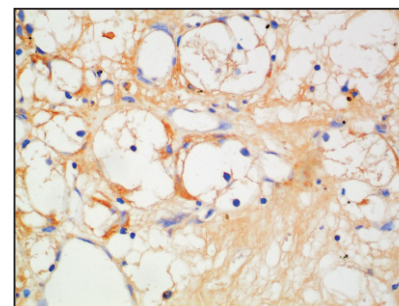
Transmembrane: 100V, 4°C, 1h

Blocking: 5% w/v nonfat dry milk, 1×TBST, at RT with gentle shaking

Primary antibody: 1:1000 in blocking buffer, 4°C, overnight

Secondary antibody (WLA023a) : 1:5000-1:10000, 45min

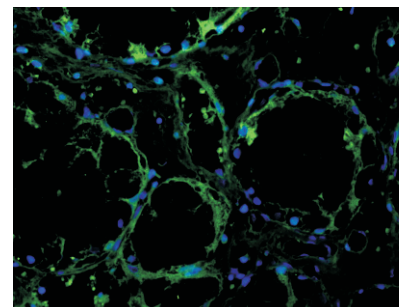
Detection: ECL, 30s-2min



Immunohistochemistry-Anti-PRSS8 pAb

Immunohistochemical analysis of paraffin-embedded human renal clear cell carcinoma using anti-PRSS8 Rabbit Antibody at 1:200 dilution.

Perform heat mediated antigen retrieval with Tris-EDTA buffer pH 9.0



Immunofluorescence-Anti-PRSS8 pAb

Immunofluorescence analysis of paraffin-embedded human renal clear cell carcinoma using anti-PRSS8 Rabbit Antibody at 1:200 dilution.

Perform heat mediated antigen retrieval with Tris-EDTA buffer pH 9.0

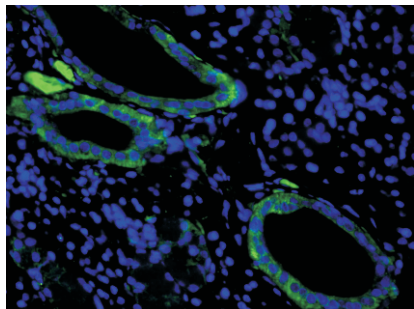
Anti-PRSS8 Rabbit pAb



WL05211

For Research Use Only. Not For Use In Diagnostic Procedures

Product Information



Immunofluorescence-Anti-PRSS8 pAb

Immunofluorescence analysis of paraffin-embedded rat salivary gland using anti-PRSS8 Rabbit Antibody at 1:200 dilution.

Perform heat mediated antigen retrieval with Tris-EDTA buffer pH 9.0