

Anti-PGC1 $\alpha$  Rabbit pAb

WL02123

For Research Use Only. Not For Use In Diagnostic Procedures

## Product Information

<b>Product name</b>	Anti-PGC1 $\alpha$ Rabbit pAb	
<b>Source</b>	Rabbit	
<b>Species reactivity</b>	Human, Mouse, Rat	
<b>Tested applications</b>	Western blot	1:1000-1:2000
	Immunohistochemistry	1:100-1:200
<i>*Suggested working dilutions are given as a guide only. It is recommended that the user titrates the product for use in their own experiment using appropriate negative and positive controls.</i>		
<b>Cellular localization</b>	Cytoplasm, Nucleus, PML body.	
<b>Pack size</b>	50/100/200/500/1000 $\mu$ l	
<b>Storage</b>	Store at -20°C. <b>Avoid freeze/thaw cycles.</b>	
<b>Storage buffer</b>	Supplied in 20 mM phosphate (pH 7.5), 150 mM NaCl, 100 $\mu$ g/ml	
	BSA, 50% glycerol and less than 0.02% sodium azide	

## General Information

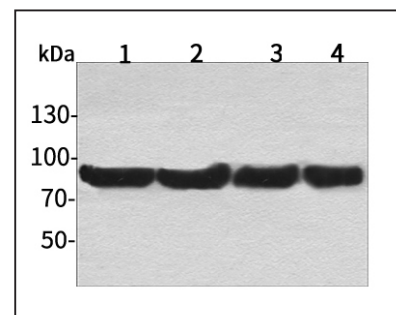
<b>Background</b>	PPARgamma co-activator-1 (PGC-1) is a transcriptional cofactor of nuclear respiratory factor-1 (NRF-1), PPARbeta, PPARalpha and other nuclear receptors that is induced by exposure to cold temperatures and is involved in regulating thermogenic gene expression, protein uncoupling, and mitochondrial biogenesis. PGC-1 has a low inherent transcriptional activity when it is not bound to a transcription factor. It may be also involved in controlling blood pressure, regulating cellular cholesterol homeostasis, and the development of obesity.
<b>Immunogen</b>	Polyclonal antibody is produced by immunizing animals with a synthetic peptide of PGC1 $\alpha$ .
<b>Purification</b>	Polyclonal antibody was purified by Protein A affinity chromatography.

Anti-PGC1 $\alpha$  Rabbit pAb

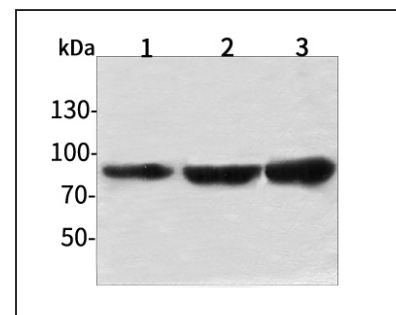
WL02123

For Research Use Only. Not For Use In Diagnostic Procedures

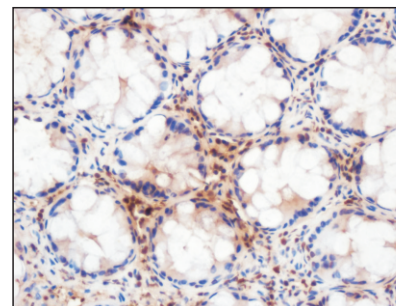
## Product Images

Western blot-Anti-PGC1 $\alpha$  pAb

Lane 1: Human HepG2 cell lysate  
 Lane 2: Human Hela cell lysate  
 Lane 3: Human BGC-823 cell lysate  
 Lane 4: Human MGC-803 cell lysate  
 All lanes: Anti-PGC1 $\alpha$  at 1:1000 dilution  
 Lysates/proteins at 20-50  $\mu$ g per lane  
 Predicted band size: 91 kDa  
 Observed band size: 91-130 kDa

Western blot-Anti-PGC1 $\alpha$  pAb

Lane 1: Mouse heart tissue lysate  
 Lane 2: Mouse liver tissue lysate  
 Lane 3: Rat brain tissue lysate  
 All lanes: Anti-PGC1 $\alpha$  at 1:1000 dilution  
 Lysates/proteins at 20-50  $\mu$ g per lane  
 Predicted band size: 91 kDa  
 Observed band size: 91-130 kDa

Immunohistochemistry-Anti-PGC1 $\alpha$  pAb

Sample: Human colon cancer tissue  
 Antigen retrieval: pH 6.0 citrate buffer  
 Primary antibody: 1:200, 4°C, overnight  
 Secondary antibody-Biotin: 1:150, 37°C, 1h  
 Streptavidin-HRP: 1:200, 37°C, 30min  
 Color Developing: DAB