

## Anti-ADX/FDX1 Rabbit pAb



WLA0583

For Research Use Only. Not For Use In Diagnostic Procedures

## Product Information

<b>Product name</b>	Anti-ADX/FDX1 Rabbit pAb	
<b>Source</b>	Rabbit	
<b>Species reactivity</b>	Human, Mouse, Rat	
<b>Tested applications</b>	WB	1:500-1:1000
	IHC, IF	1:100-1:500
<b>Cellular localization</b>	Mitochondrion matrix.	
<b>Pack size</b>	50/100/200/500/1000µl	
<b>Storage</b>	Store at -20°C. <b>Avoid freeze/thaw cycles.</b>	
<b>Storage buffer</b>	Supplied in 20 mM phosphate (pH 7.5), 150 mM NaCl, 100 µg/ml	
	BSA, 50% glycerol and less than 0.02% sodium azide	

## General Information

<b>Background</b>	FDX1 (Ferredoxin-1), also known as ADX, FDX, YAH1, LOH11CR1D, belongs to the adrenergic toxin/putidaredoxin family and is a small iron sulfur protein. This protein is involved in vitamin D and bile acid metabolism, and is essential for the synthesis of various steroid hormones. It can transfer electrons from NADPH to ferritin reductase and participate in reducing mitochondrial cytochrome P450 for steroidogenesis
<b>Immunogen</b>	Polyclonal antibody is produced by immunizing animals with a synthetic peptide of ADX/FDX1.
<b>Purification</b>	Polyclonal antibody was purified by Protein A affinity chromatography.

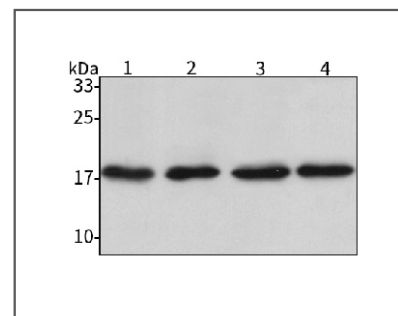
## Anti-ADX/FDX1 Rabbit pAb



WLA0583

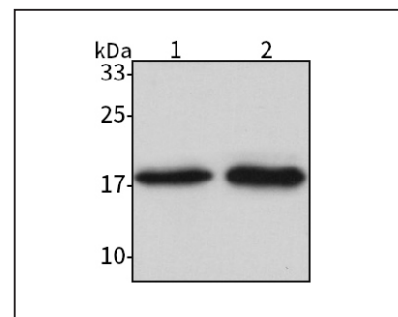
For Research Use Only. Not For Use In Diagnostic Procedures

## Product Images



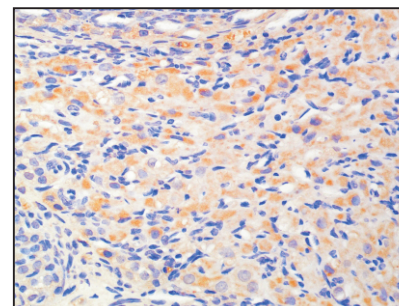
## Western blot-Anti-ADX/FDX1 pAb

Lane 1: Human Hela cell lysate  
 Lane 2: Human A2780 cell lysate  
 Lane 3: Human Raji cell lysate  
 Lane 4: Human Calu-3 cell lysate  
 All lanes: Anti-ADX/FDX1 at 1:2000 dilution  
 Lysates/proteins at 20-50 µg per lane  
 Predicted band size: 19 kDa  
 Observed band size: 19 kDa



## Western blot-Anti-ADX/FDX1 pAb

Lane 1: Mouse adrenal gland tissue lysate  
 Lane 2: Rat adrenal gland tissue lysate  
 All lanes: Anti-ADX/FDX1 at 1:2000 dilution  
 Lysates/proteins at 20-50 µg per lane  
 Predicted band size: 19 kDa  
 Observed band size: 19 kDa



## Immunohistochemistry-Anti-ADX/FDX1 pAb

Immunohistochemical analysis of paraffin-embedded rat ovary using anti-ADX/FDX1 Rabbit Antibody at 1:200 dilution.  
 Perform heat mediated antigen retrieval with Tris-EDTA buffer pH 9.0

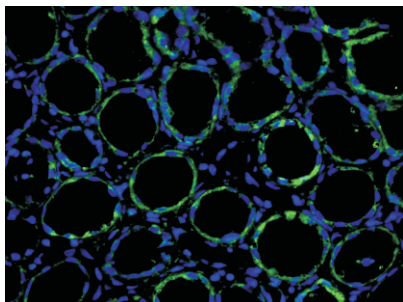
## Anti-ADX/FDX1 Rabbit pAb



WLA0583

For Research Use Only. Not For Use In Diagnostic Procedures

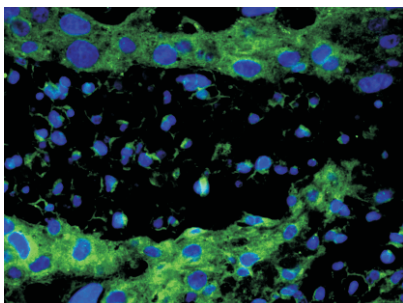
### Product Information



#### Immunofluorescence-Anti-ADX/FDX1 pAb

Immunofluorescence analysis of paraffin-embedded human kidney cancer using anti-ADX/FDX1 Rabbit Antibody at 1:200 dilution.

Perform heat mediated antigen retrieval with Tris-EDTA buffer pH 9.0



#### Immunofluorescence-Anti-ADX/FDX1 pAb

Immunofluorescence analysis of paraffin-embedded rat placenta using anti-ADX/FDX1 Rabbit Antibody at 1:200 dilution.

Perform heat mediated antigen retrieval with Tris-EDTA buffer pH 9.0