

Anti-Cytokeratin 8 Rabbit pAb



WL02755

For Research Use Only. Not For Use In Diagnostic Procedures

Product Information

Product name	Anti-Cytokeratin 8 Rabbit pAb	
Source	Rabbit	
Species reactivity	Human, Mouse, Rat	
Tested applications	WB	1:1000-1:2000
	IHC	1:100-1:400
	IF	1:100-1:400
Cellular localization	Cytoplasm. Nucleus, nucleoplasm. Nucleus matrix.	
Pack size	50/100/200/500/1000μl	
Storage	Store at -20°C. Avoid freeze/thaw cycles.	
Storage buffer	Supplied in 20 mM phosphate (pH 7.5), 150 mM NaCl, 100 μg/ml	
	BSA, 50% glycerol and less than 0.02% sodium azide	

General Information

Background	Cytokeratins play a critical role in differentiation and tissue specialization and function to maintain the overall structural integrity of epithelial cells. They have been found to be useful markers of tissue differentiation, which is directly applicable to the characterization of malignant tumors. Cytokeratin 8 expression is seen in epithelium and epithelium-derived tumors. Cytokeratin 8 expression correlates with malignancy in leukoplakia and carcinomas of the head and neck; it is expressed in all non-small-cell lung cancers. Cytokeratin 8 has been shown to possess extracellular epitopes on tumor cells, which may represent valuable targets for therapy.
Immunogen	Polyclonal antibody is produced by immunizing animals with a synthetic peptide of Cytokeratin 8.
Purification	Polyclonal antibody was purified by Protein A affinity chromatography.

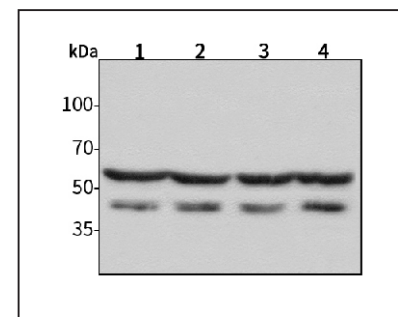
Anti-Cytokeratin 8 Rabbit pAb



WL02755

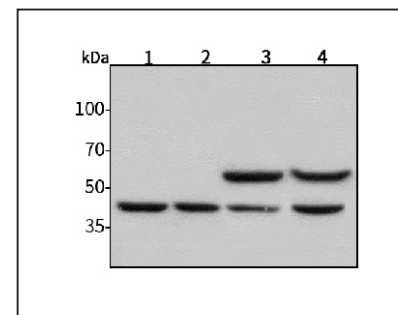
For Research Use Only. Not For Use In Diagnostic Procedures

Product Images



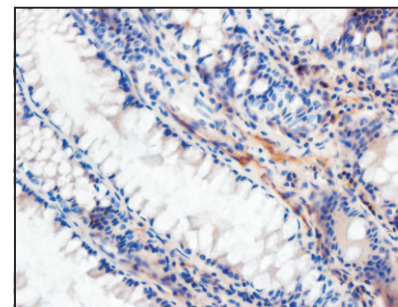
Western blot-Anti-Cytokeratin 8 pAb

Lane 1: Human HepG2 cell lysate
 Lane 2: Human Hela cell lysate
 Lane 3: Human BGC-823 cell lysate
 Lane 4: Human MGC-803 cell lysate
 All lanes: Anti-Cytokeratin 8 at 1:1000 dilution
 Lysates/proteins at 20-50 μg per lane.
 Predicted band size: 54 kDa
 Observed band size: 54 kDa



Western blot-Anti-Cytokeratin 8 pAb

Lane 1: Mouse heart tissue lysate
 Lane 2: Mouse brain tissue lysate
 Lane 3: Rat kidney tissue lysate
 Lane 4: Rat liver tissue lysate
 All lanes: Anti-Cytokeratin 8 at 1:1000 dilution
 Lysates/proteins at 20-50 μg per lane.
 Predicted band size: 54 kDa
 Observed band size: 54 kDa



Immunohistochemistry-Anti-Cytokeratin 8 pAb

Immunohistochemical analysis of paraffin-embedded human colon cancer using anti-Cytokeratin 8 Rabbit Antibody at 1:200 dilution. Perform heat mediated antigen retrieval with Tris-EDTA buffer pH 9.0

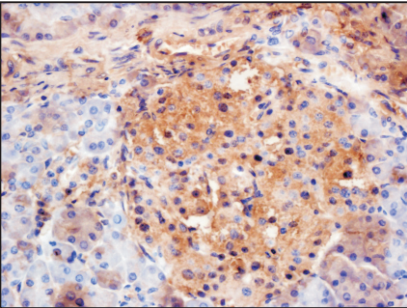
Anti-Cytokeratin 8 Rabbit pAb



WL02755

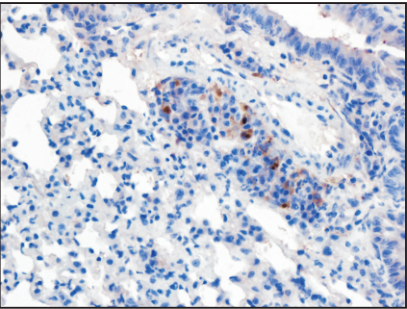
For Research Use Only. Not For Use In Diagnostic Procedures

Product Information



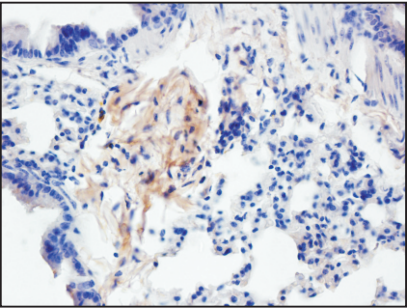
Immunohistochemistry-Anti-Cytokeratin 8 pAb

Immunohistochemical analysis of paraffin-embedded human pancreas using anti-Cytokeratin 8 Rabbit Antibody at 1:200 dilution.
Perform heat mediated antigen retrieval with Tris-EDTA buffer pH 9.0



Immunohistochemistry-Anti-Cytokeratin 8 pAb

Immunohistochemical analysis of paraffin-embedded mouse lung using anti-Cytokeratin 8 Rabbit Antibody at 1:200 dilution.
Perform heat mediated antigen retrieval with Tris-EDTA buffer pH 9.0



Immunohistochemistry-Anti-Cytokeratin 8 pAb

Immunohistochemical analysis of paraffin-embedded mouse lung using anti-Cytokeratin 8 Rabbit Antibody at 1:250 dilution.
Perform heat mediated antigen retrieval with Tris-EDTA buffer pH 9.0

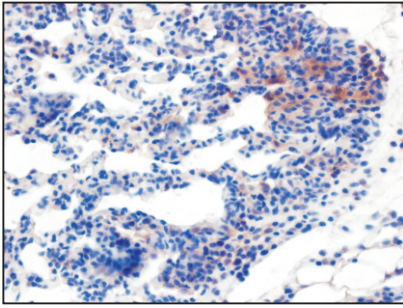
Anti-Cytokeratin 8 Rabbit pAb



WL02755

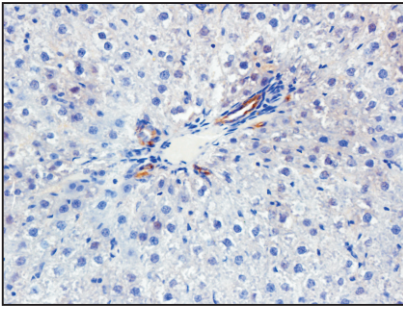
For Research Use Only. Not For Use In Diagnostic Procedures

Product Images



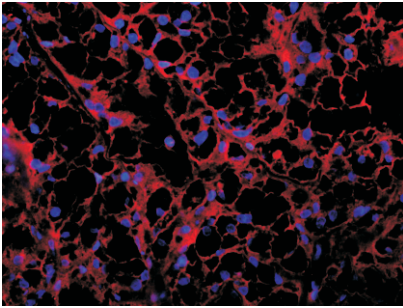
Immunohistochemistry-Anti-Cytokeratin 8 pAb

Immunohistochemical analysis of paraffin-embedded rat lung using anti-Cytokeratin 8 Rabbit Antibody at 1:400 dilution.
Perform heat mediated antigen retrieval with Tris-EDTA buffer pH 9.0



Immunohistochemistry-Anti-Cytokeratin 8 pAb

Immunohistochemical analysis of paraffin-embedded rat liver using anti-Cytokeratin 8 Rabbit Antibody at 1:250 dilution.
Perform heat mediated antigen retrieval with Tris-EDTA buffer pH 9.0



Immunofluorescence-Anti-Cytokeratin 8 pAb

Immunofluorescence analysis of paraffin-embedded human kidney cancer using anti-Cytokeratin 8 Rabbit Antibody at 1:200 dilution.
Perform heat mediated antigen retrieval with Tris-EDTA buffer pH 9.0

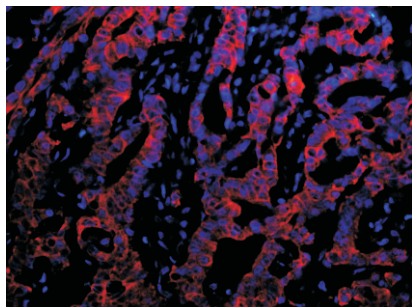


Anti-Cytokeratin 8 Rabbit pAb

WL02755

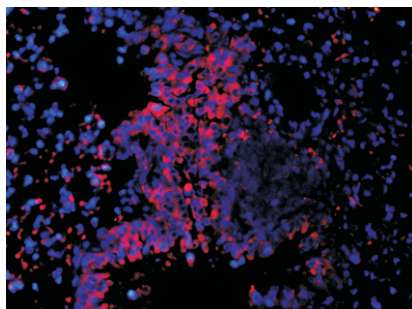
For Research Use Only. Not For Use In Diagnostic Procedures

Product Information



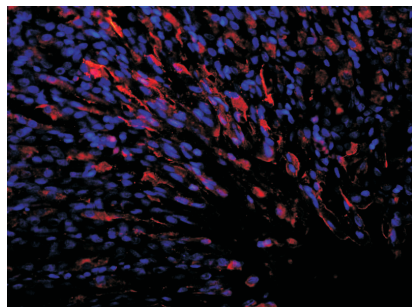
Immunofluorescence-Anti-Cytokeratin 8 pAb

Immunofluorescence analysis of paraffin-embedded human colon cancer using anti-Cytokeratin 8 Rabbit Antibody at 1:200 dilution.
Perform heat mediated antigen retrieval with Tris-EDTA buffer pH 9.0



Immunofluorescence-Anti-Cytokeratin 8 pAb

Immunofluorescence analysis of paraffin-embedded mouse lung using anti-Cytokeratin 8 Rabbit Antibody at 1:200 dilution.
Perform heat mediated antigen retrieval with Tris-EDTA buffer pH 9.0



Immunofluorescence-Anti-Cytokeratin 8 pAb

Immunofluorescence analysis of paraffin-embedded rat stomach using anti-Cytokeratin 8 Rabbit Antibody at 1:200 dilution.
Perform heat mediated antigen retrieval with Tris-EDTA buffer pH 9.0