

Anti-DEP1 Rabbit pAb



WL00279

For Research Use Only. Not For Use In Diagnostic Procedures

Product Information

Product name	Anti-DEP1 Rabbit pAb	
Source	Rabbit	
Species reactivity	Human, Mouse, Rat	
Tested applications	WB	1:1000-1:2000
	IHC	1:500
Cellular localization	Cell membrane. Cell junction.	
Pack size	50/100/200/500/1000µl	
Storage	Store at -20°C. Avoid freeze/thaw cycles.	
Storage buffer	Supplied in 20 mM phosphate (pH 7.5), 150 mM NaCl, 100 µg/ml	
	BSA, 50% glycerol and less than 0.02% sodium azide	

General Information

Background	PTPRJ, also known as CD148 and DEP1, encodes a protein that is a member of the protein tyrosine phosphatase (PTP) family. PTP is a signaling molecule that regulates various cellular processes, including cell growth, differentiation, mitotic cycle, and oncogenic transformation. This protein is present in all hematopoietic lineages and has been shown to negatively regulate T cell receptor signaling by interfering with phospholipase C Gamma 1 and phosphorylation of T cell activation linkers. This protein can also dephosphorylate PDGF β receptors and may participate in UV induced signal transduction. PTPRJ plays a role in cell adhesion, migration, proliferation, and differentiation, and is also involved in vascular
Immunogen	Polyclonal antibody is produced by immunizing animals with a synthetic peptide of DEP1.
Purification	Polyclonal antibody was purified by Protein A affinity chromatography.

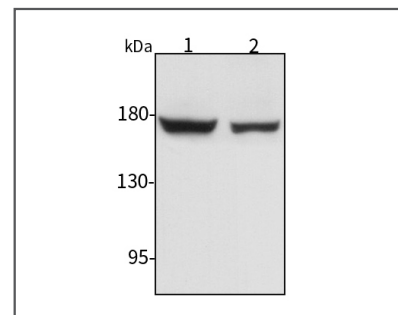
Anti-DEP1 Rabbit pAb



WL00279

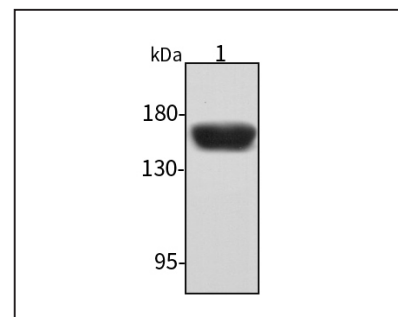
For Research Use Only. Not For Use In Diagnostic Procedures

Product Images



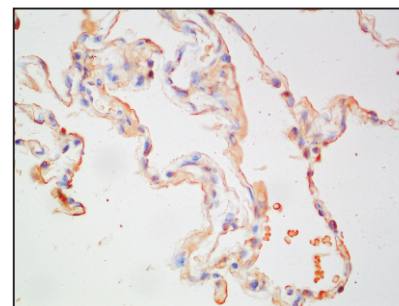
Western blot-Anti-DEP1 pAb

Lane 1: Human HCT116 cell lysate
Lane 2: Human MDA-MB-231 cell lysate
All lanes: Anti-DEP1 at 1:1000 dilution
 Lysates/proteins at 20-50 µg per lane
 Predicted band size: 146 kDa
 Observed band size: 146-250 kDa



Western blot-Anti-DEP1 pAb

Lane 1: Mouse liver tissue lysate
All lanes: Anti-DEP1 at 1:1000 dilution
 Lysates/proteins at 20-50 µg per lane
 Predicted band size: 146 kDa
 Observed band size: 146-250 kDa



Immunohistochemistry-Anti-DEP1 pAb

Immunohistochemical analysis of paraffin-embedded human lung cancer using anti-DEP1 Rabbit Antibody at 1:500 dilution.
 Perform heat mediated antigen retrieval with Tris-EDTA buffer pH 9.0

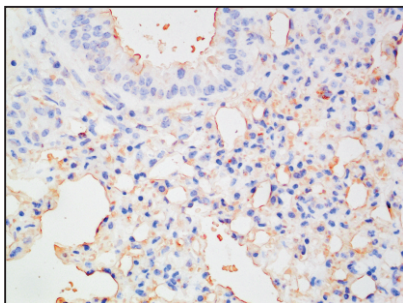
Anti-DEP1 Rabbit pAb



WL00279

For Research Use Only. Not For Use In Diagnostic Procedures

Product Information



Immunohistochemistry-Anti-DEP1 pAb

Immunohistochemical analysis of paraffin-embedded mouse lung using anti-DEP1 Rabbit Antibody at 1:500 dilution.

Perform heat mediated antigen retrieval with Tris-EDTA buffer pH 9.0