

Anti-Leptin Receptor Rabbit pAb



WL0162a

For Research Use Only. Not For Use In Diagnostic Procedures

Product Information

Product name	Anti-Leptin Receptor Rabbit pAb	
Source	Rabbit	
Species reactivity	Human, Mouse, Rat	
Tested applications	WB	1:500-1:1000
	IHC	1:100
	IF	1:200
Cellular localization	Secreted and Cell membrane	
Pack size	50/100/200/500/1000μl	
Storage	Store at -20°C. Avoid freeze/thaw cycles.	
Storage buffer	Supplied in 20 mM phosphate (pH 7.5), 150 mM NaCl, 100 μg/ml	
	BSA, 50% glycerol and less than 0.02% sodium azide	

General Information

Background	The Leptin Receptor encoded belongs to the gp130 family of cytokine receptors that are known to stimulate gene transcription via activation of cytosolic STAT proteins. This protein is a receptor for leptin (an adipocyte-specific hormone that regulates body weight), and is involved in the regulation of fat metabolism, as well as in a novel hematopoietic pathway that is required for normal lymphopoiesis. Mutations in this gene have been associated with obesity and pituitary dysfunction.
Immunogen	Polyclonal antibody is produced by immunizing animals with a synthetic peptide of Leptin Receptor.
Purification	Polyclonal antibody was purified by immunogen affinity chromatography.

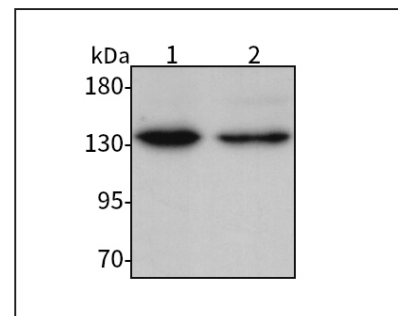
Anti-Leptin Receptor Rabbit pAb



WL0162a

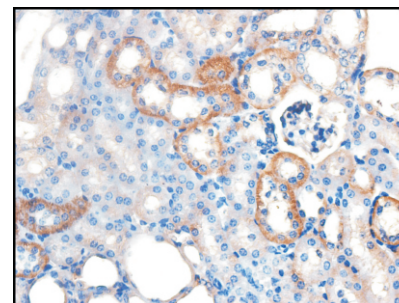
For Research Use Only. Not For Use In Diagnostic Procedures

Product Images



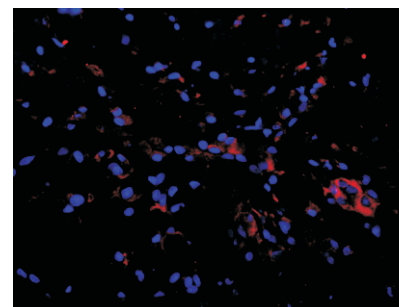
Western blot-Anti-Leptin Receptor pAb

Lane 1: Human HeLa cell lysate
 Lane 2: Human HepG2 cell lysate
 All lanes: Anti-Leptin Receptor at 1:1000 dilution
 Lysates/proteins at 20-50 μg per lane.
 Predicted band size: 132 kDa
 Observed band size: 132 kDa



Immunohistochemistry-Anti-Leptin Receptor pAb

Immunohistochemical analysis of paraffin-embedded human kidney using anti-Leptin Receptor Rabbit Antibody at 1:100 dilution.
 Perform heat mediated antigen retrieval with Tris-EDTA buffer pH 9.0



Immunofluorescence-Anti-Leptin Receptor pAb

Immunofluorescence analysis of paraffin-embedded rat cerebral hemorrhage using anti-Leptin Receptor Rabbit Antibody at 1:200 dilution.
 Perform heat mediated antigen retrieval with Tris-EDTA buffer pH 9.0