

## Anti-G protein alpha Q Rabbit pAb



WL03665

For Research Use Only. Not For Use In Diagnostic Procedures

## Product Information

<b>Product name</b>	Anti-G protein alpha Q Rabbit pAb	
<b>Source</b>	Rabbit	
<b>Species reactivity</b>	Human, Mouse, Rat	
<b>Tested applications</b>	WB	1:500-1:1000
	IHC	1:200
<b>Cellular localization</b>	Nucleus. Membrane. Nucleus membrane	
<b>Pack size</b>	50/100/200/500/1000μl	
<b>Storage</b>	Store at -20°C. <b>Avoid freeze/thaw cycles.</b>	
<b>Storage buffer</b>	Supplied in 20 mM phosphate (pH 7.5), 150 mM NaCl, 100 μg/ml	
	BSA, 50% glycerol and less than 0.02% sodium azide	

## General Information

<b>Background</b>	Heterotrimeric G proteins function to relay information from cell surface receptors to intracellular effectors. This locus encodes a guanine nucleotide-binding protein. The protein, an alpha subunit in the Gq class, couples a seven-transmembrane domain receptor to activation of phospholipase C-beta. Mutations at this locus have been associated with problems in platelet activation and aggregation.
<b>Immunogen</b>	Polyclonal antibody is produced by immunizing animals with a synthetic peptide of G protein alpha Q.
<b>Purification</b>	Polyclonal antibody was purified by immunogen affinity chromatography.

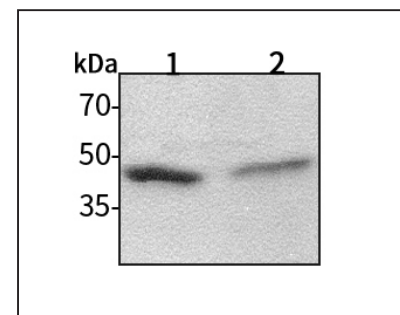
## Anti-G protein alpha Q Rabbit pAb



WL03665

For Research Use Only. Not For Use In Diagnostic Procedures

## Product Images



## Western blot-Anti-G protein alpha Q pAb

Lane 1: Human Hela cell lysate

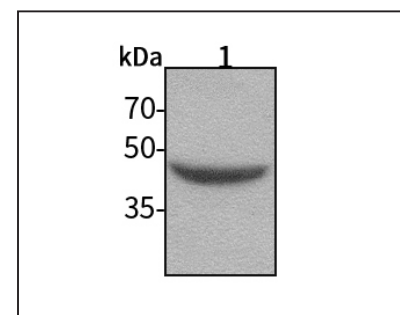
Lane 2: Human MCF-7 cell lysate

All lanes: Anti-G protein alpha Q at 1:1000 dilution

Lysates/proteins at 20-50 μg per lane.

Predicted band size: 42 kDa

Observed band size: 42 kDa



## Western blot-Anti-G protein alpha Q pAb

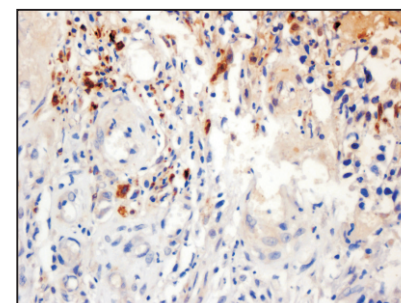
Lane 1: Mouse kidney tissue

All lanes: Anti-G protein alpha Q at 1:1000 dilution

Lysates/proteins at 20-50 μg per lane.

Predicted band size: 42 kDa

Observed band size: 42 kDa



## Immunohistochemistry-Anti-G protein alpha Q pAb

Immunohistochemical analysis of paraffin-embedded human colon cancer using anti-G protein alpha Q Rabbit Antibody at 1:200 dilution.

Perform heat mediated antigen retrieval with Tris-EDTA buffer pH 9.0

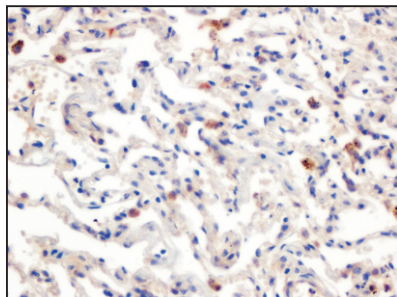
## Anti-G protein alpha Q Rabbit pAb



WL03665

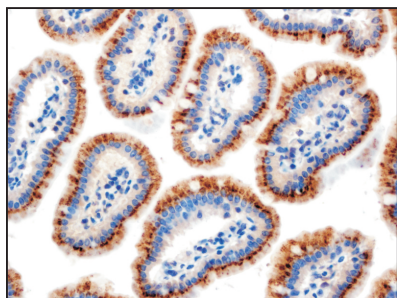
For Research Use Only. Not For Use In Diagnostic Procedures

### Product Information



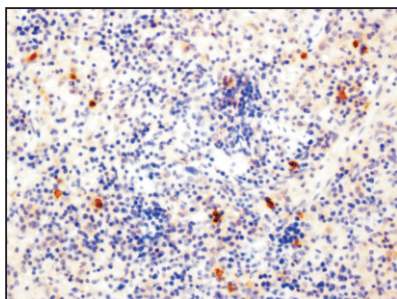
#### Immunohistochemistry-Anti-G protein alpha Q pAb

Immunohistochemical analysis of paraffin-embedded human lung cancer using anti-G protein alpha Q Rabbit Antibody at 1:200 dilution.  
Perform heat mediated antigen retrieval with Tris-EDTA buffer pH 9.0



#### Immunohistochemistry-Anti-G protein alpha Q pAb

Immunohistochemical analysis of paraffin-embedded mouse colon using anti-G protein alpha Q Rabbit Antibody at 1:200 dilution.  
Perform heat mediated antigen retrieval with Tris-EDTA buffer pH 9.0



#### Immunohistochemistry-Anti-G protein alpha Q pAb

Immunohistochemical analysis of paraffin-embedded rat spleen tissue using anti-G protein alpha Q Rabbit Antibody at 1:200 dilution.  
Perform heat mediated antigen retrieval with Tris-EDTA buffer pH 9.0