

Anti-MEF2C Rabbit pAb



WL04804

For Research Use Only. Not For Use In Diagnostic Procedures

Product Information

Product name	Anti-MEF2C Rabbit pAb		
Source	Rabbit		
Species reactivity	Human		
Tested applications	WB	1:1000-1:2000	
Pack size	50/100/200/500/1000μl		
Storage	Store at -20°C. <b>Avoid freeze/thaw cycles.</b>		
Storage buffer	Supplied in 20 mM phosphate (pH 7.5), 150 mM NaCl, 100 μg/ml BSA, 50% glycerol and less than 0.02% sodium azide		

General Information

Background	MEF2C belongs to the MEF2 family, which play a role in myogenesis. MEF2C controls cardiac morphogenesis and myogenesis, and is also involved in vascular developmen.It plays an essential role in hippocampal-dependent learning and memory by suppressing the number of excitatory synapses and thus regulating basal and evoked synaptic transmission.
Immunogen	Polyclonal antibody is produced by immunizing animals with a synthetic peptide of MEF2C.
Purification	Polyclonal antibody was purified by Protein A affinity chromatography.

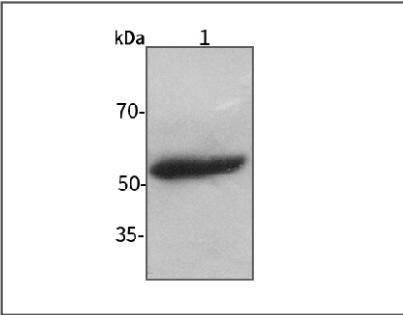
Anti-MEF2C Rabbit pAb



WL04804

For Research Use Only. Not For Use In Diagnostic Procedures

Product Images



Western blot-Anti-MEF2C pAb

Lane 1: Human Hela cell lysate  
All lanes: Anti-MEF2C at 1:1000 dilution  
Lysates/proteins at 20-50 μg per lane.  
Predicted band size: 51 kDa  
Observed band size: 50-60 kDa