

Anti-GDF15 Rabbit pAb



WLA0577

For Research Use Only. Not For Use In Diagnostic Procedures

Product Information

Product name	Anti-GDF15 Rabbit pAb	
Source	Rabbit	
Species reactivity	Human, Mouse, Rat	
Tested applications	WB	1:500-1:1000
	IHC, IF	1:100-1:200
Cellular localization	Secreted.	
Pack size	50/100/200/500/1000µl	
Storage	Store at -20°C. Avoid freeze/thaw cycles.	
Storage buffer	Supplied in 20 mM phosphate (pH 7.5), 150 mM NaCl, 100 µg/ml	
	BSA, 50% glycerol and less than 0.02% sodium azide	

General Information

Background	The GDF15 gene encodes a protein that is a secretory ligand of TGF- β (transforming growth factor-beta). Ligands of this family bind to various TGF- β receptors, leading to the recruitment and activation of the SMAD family of transcription factors that regulate gene expression. GDF15 is associated with hypoxia, inflammation, and oxidative stress, and is released from endothelial cells after stimulation by pro-inflammatory cytokines. GDF15 is considered a target and biomarker for cardiovascular diseases due to its cardioprotective effects in the adult heart. GDF15 is highly expressed in the placenta. GDF15 is also involved in human embryonic development and is essential for maintaining pregnancy. GDF15-GFRAL signaling induces the expression of genes involved in metabolism, such as lipid metabolism in adipose tissue.
Immunogen	Polyclonal antibody is produced by immunizing animals with a synthetic peptide of GDF15.
Purification	Polyclonal antibody was purified by immunogen affinity chromatography.

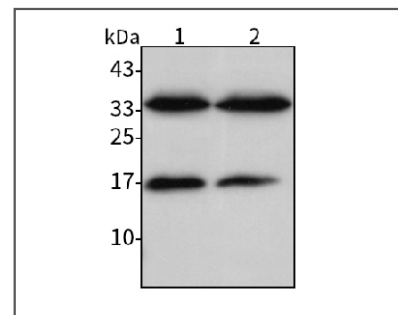
Anti-GDF15 Rabbit pAb



WLA0577

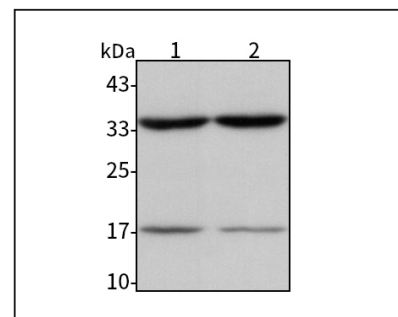
For Research Use Only. Not For Use In Diagnostic Procedures

Product Images



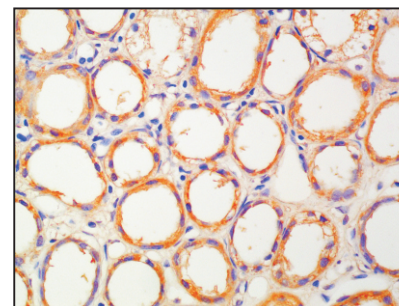
Western blot-Anti-GDF15 pAb

Lane 1: Human HepG2 cell lysate
Lane 2: Human A2780 cell lysate
All lanes: Anti-GDF15 at 1:1000 dilution
 Lysates/proteins at 20-50 µg per lane
 Predicted band size: 34 kDa
 Observed band size: 35 kDa



Western blot-Anti-GDF15 pAb

Lane 1: Mouse placenta tissue lysate
Lane 2: Rat placenta tissue lysate
All lanes: Anti-GDF15 at 1:1000 dilution
 Lysates/proteins at 20-50 µg per lane
 Predicted band size: 34 kDa
 Observed band size: 35 kDa



Immunohistochemistry-Anti-GDF15 pAb

Immunohistochemical analysis of paraffin-embedded human kidney cancer using anti-GDF15 Rabbit Antibody at 1:100 dilution.
 Perform heat mediated antigen retrieval with Tris-EDTA buffer pH 9.0

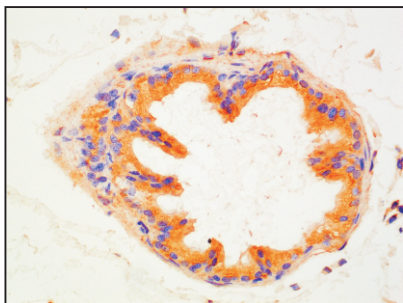
Anti-GDF15 Rabbit pAb



WLA0577

For Research Use Only. Not For Use In Diagnostic Procedures

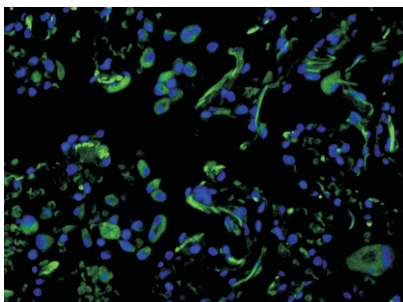
Product Information



Immunohistochemistry-Anti-GDF15 pAb

Immunohistochemical analysis of paraffin-embedded mouse prostate using anti-GDF15 Rabbit Antibody at 1:100 dilution.

Perform heat mediated antigen retrieval with Tris-EDTA buffer pH 9.0



Immunofluorescence-Anti-GDF15 pAb

Immunofluorescence analysis of paraffin-embedded human lung cancer using anti-GDF15 Rabbit Antibody at 1:100 dilution.

Perform heat mediated antigen retrieval with Tris-EDTA buffer pH 9.0