

Anti-ZEB1 Rabbit pAb



WL03489

For Research Use Only. Not For Use In Diagnostic Procedures

Product Information

Product name	Anti-ZEB1 Rabbit pAb	
Source	Rabbit	
Species reactivity	Human; Mouse; Rat	
Tested applications	WB	1:500-1:1000
	IHC	1:200
Cellular localization	Nucleus	
Pack size	50/100/200/500/1000μl	
Storage	Store at -20°C. Avoid freeze/thaw cycles.	
Storage buffer	Supplied in 20 mM phosphate (pH 7.5), 150 mM NaCl, 100 μg/ml	
	BSA, 50% glycerol and less than 0.02% sodium azide	

General Information

Background	This gene encodes a zinc finger transcription factor. The encoded protein likely plays a role in transcriptional repression of interleukin 2. ZEB1 contains two separate zinc finger domains (ZD1 and ZD2), which are essential for DNA binding and repression, and a homeodomain (HD), which is not. ZEB1 also contains three repression domains, two of which flank ZD1, and a third located between HD and ZD2. Interaction of ZEB1 with the TSHβ gene T3-response element may play a role in the modification of gene-specific regulation by thyroid hormones. In the embryo, ZEB1 is primarily expressed in the mesoderm, but changes in the level of expression during tissue maturation suggest a role for ZEB1 in the early histogenesis of mesodermal tissues.
Immunogen	Polyclonal antibody is produced by immunizing animals with a synthetic peptide of ZEB1.
Purification	Polyclonal antibody was purified by immunogen affinity chromatography.

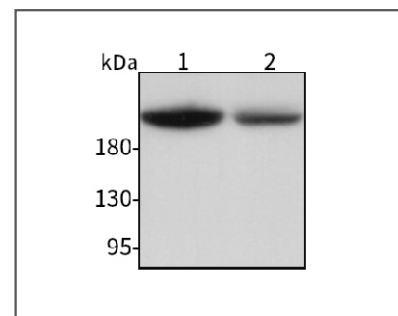
Anti-ZEB1 Rabbit pAb



WL03489

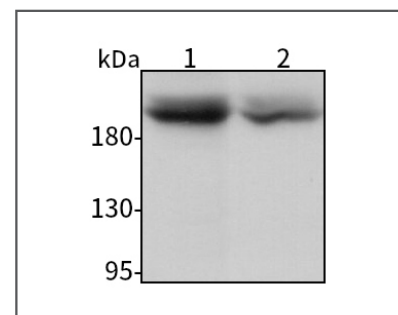
For Research Use Only. Not For Use In Diagnostic Procedures

Product Images



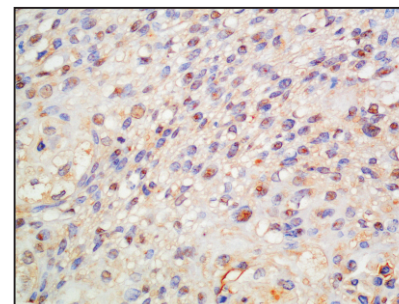
Western blot-Anti-ZEB1 pAb

Lane 1: Human Jurkat cell lysate
Lane 2: Human Hela cell lysate
All lanes: Anti-ZEB1 at 1:1000 dilution
 Lysates/proteins at 20-50 μg per lane.
 Predicted band size: 124 kDa
 Observed band size: 200 kDa



Western blot-Anti-ZEB1 pAb

Lane 1: Mouse kidney tissue lysate
Lane 2: Rat ovary tissue lysate
All lanes: Anti-ZEB1 at 1:1000 dilution
 Lysates/proteins at 20-50 μg per lane.
 Predicted band size: 124 kDa
 Observed band size: 200 kDa



Immunohistochemistry-Anti-ZEB1 pAb

Immunohistochemical analysis of paraffin-embedded human esophagus cancer using anti-ZEB1 Rabbit Antibody at 1:200 dilution.
 Perform heat mediated antigen retrieval with Tris-EDTA buffer pH 9.0

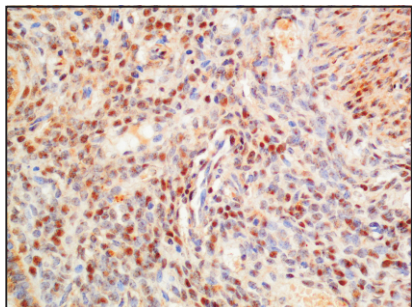
Anti-ZEB1 Rabbit pAb



WL03489

For Research Use Only. Not For Use In Diagnostic Procedures

Product Information



Immunohistochemistry-Anti-ZEB1 pAb

Immunohistochemical analysis of paraffin-embedded mouse uterus using anti-ZEB1 Rabbit Antibody at 1:200 dilution.

Perform heat mediated antigen retrieval with Tris-EDTA buffer pH 9.0