

## Anti-YAP1 Rabbit pAb



WL03624

For Research Use Only. Not For Use In Diagnostic Procedures

## Product Information

|                              |  |              |
|------------------------------|--|--------------|
| <b>Product name</b>          | Anti-YAP1 Rabbit pAb   |              |
| <b>Source</b>                | Rabbit   |              |
| <b>Species reactivity</b>    | Human, Mouse, Rat  |              |
| <b>Tested applications</b>   | WB   | 1:500-1:1000 |
|                              | IHC  | 1:200        |
|                              | IF   | 1:200        |
| <b>Cellular localization</b> | Cytoplasm. Nucleus.  |              |
| <b>Pack size</b>             | 50/100/200/500/1000µl  |              |
| <b>Storage</b>               | Store at -20°C. <b>Avoid freeze/thaw cycles.</b>             |              |
| <b>Storage buffer</b>        | Supplied in 20 mM phosphate (pH 7.5), 150 mM NaCl, 100 µg/ml |              |
|                              | BSA, 50% glycerol and less than 0.02% sodium azide           |              |

## General Information

|                     |  |
|---------------------|--|
| <b>Background</b>   | YAP1 (yes-associated protein 1), also known as YAP or YAP65, is a protein that acts as a transcriptional regulator by activating the transcription of genes involved in cell proliferation and suppressing apoptotic genes. YAP1 is inhibited in the Hippo signaling pathway which allows the cellular control of organ size and tumor suppression. YAP1 was first identified by virtue of its ability to associate with the SH3 domain of Yes and Src protein tyrosine kinases. YAP1 is a potent oncogene, which is amplified in various human cancers. |
| <b>Immunogen</b>    | Polyclonal antibody is produced by immunizing animals with a synthetic peptide of YAP1.  |
| <b>Purification</b> | Polyclonal antibody was purified by immunogen affinity chromatography.   |

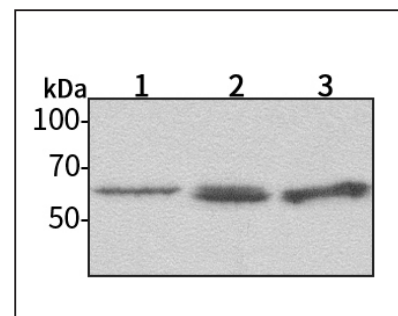
## Anti-YAP1 Rabbit pAb



WL03624

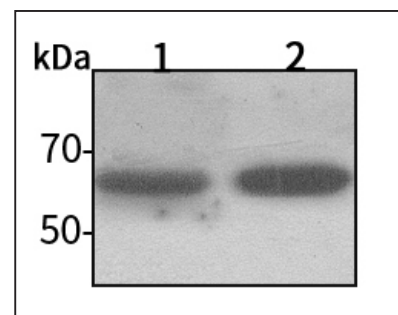
For Research Use Only. Not For Use In Diagnostic Procedures

## Product Images



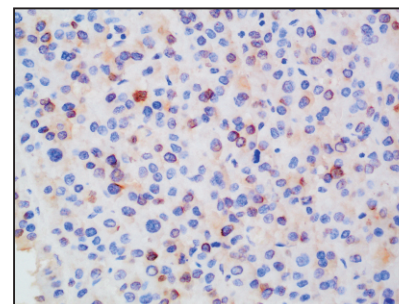
Western blot-Anti-YAP1 pAb

Lane 1: Human A549 cell lysate  
 Lane 2: Human MCF-7 cell lysate  
 Lane 3: Human SW480 cell lysate  
 All lanes: Anti-YAP1 at 1:1000 dilution  
 Lysates/proteins at 20-50 µg per lane.  
 Predicted band size: 54 kDa  
 Observed band size: 65-75 kDa



Western blot-Anti-YAP1 pAb

Lane 1: Mouse kidney tissue lysate  
 Lane 2: Rat lung tissue lysate  
 All lanes: Anti-YAP1 at 1:1000 dilution  
 Lysates/proteins at 20-50 µg per lane.  
 Predicted band size: 54 kDa  
 Observed band size: 65-75 kDa



Immunohistochemistry-Anti-YAP1 pAb

Immunohistochemical analysis of paraffin-embedded human liver cancer using anti-YAP1 Rabbit Antibody at 1:200 dilution.  
 Perform heat mediated antigen retrieval with Tris-EDTA buffer pH 9.0

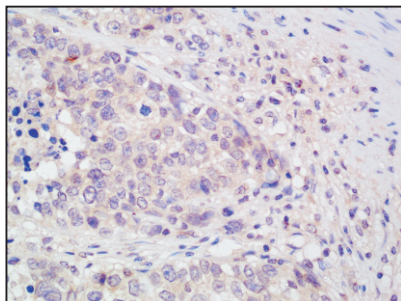
# Anti-YAP1 Rabbit pAb



WL03624

For Research Use Only. Not For Use In Diagnostic Procedures

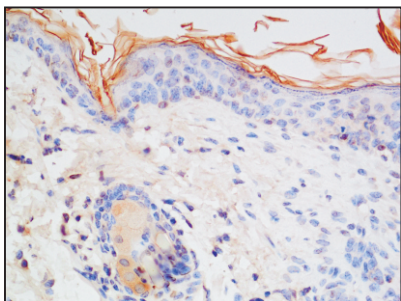
## Product Information



### Immunohistochemistry-Anti-YAP1 pAb

Immunohistochemical analysis of paraffin-embedded human breast cancer using anti-YAP1 Rabbit Antibody at 1:200 dilution.

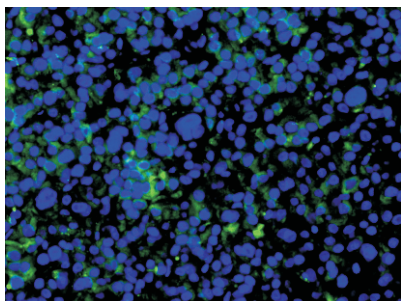
Perform heat mediated antigen retrieval with Tris-EDTA buffer pH 9.0



### Immunohistochemistry-Anti-YAP1 pAb

Immunohistochemical analysis of paraffin-embedded mouse skin using anti-YAP1 Rabbit Antibody at 1:200 dilution.

Perform heat mediated antigen retrieval with Tris-EDTA buffer pH 9.0



### Immunofluorescence-Anti-YAP1 pAb

Immunofluorescence analysis of paraffin-embedded human liver cancer using anti-YAP1 Rabbit Antibody at 1:200 dilution.

Perform heat mediated antigen retrieval with Tris-EDTA buffer pH 9.0